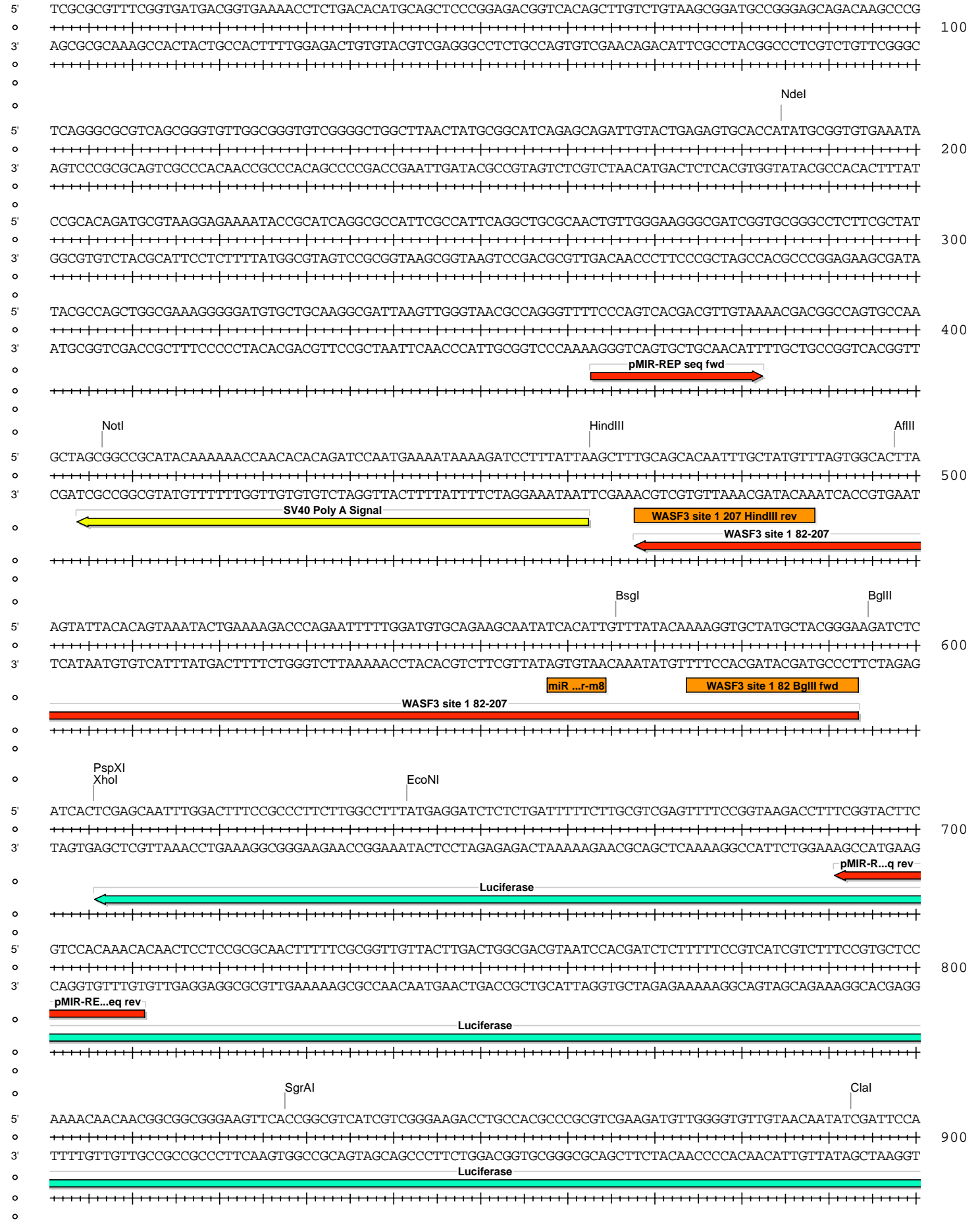
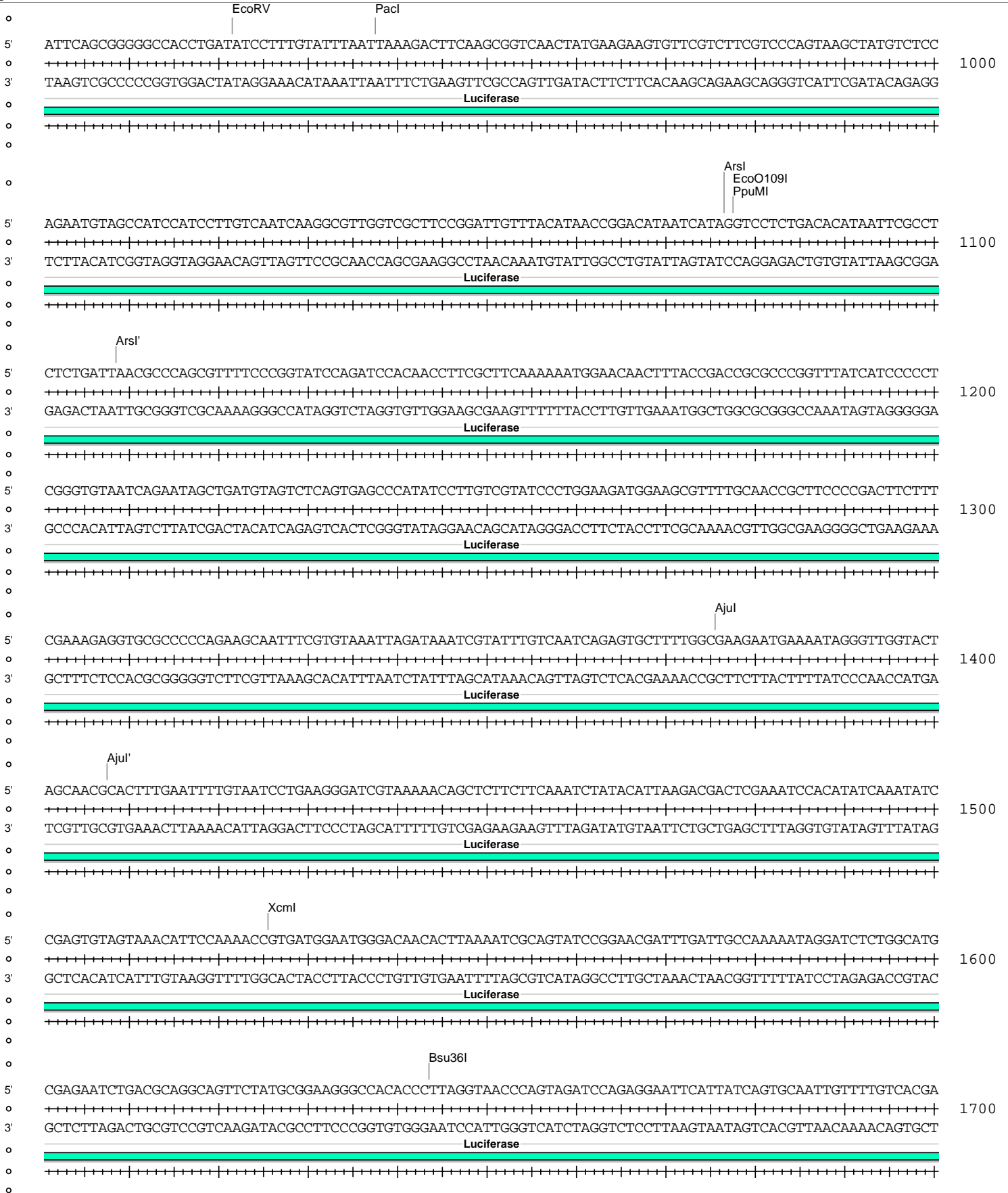


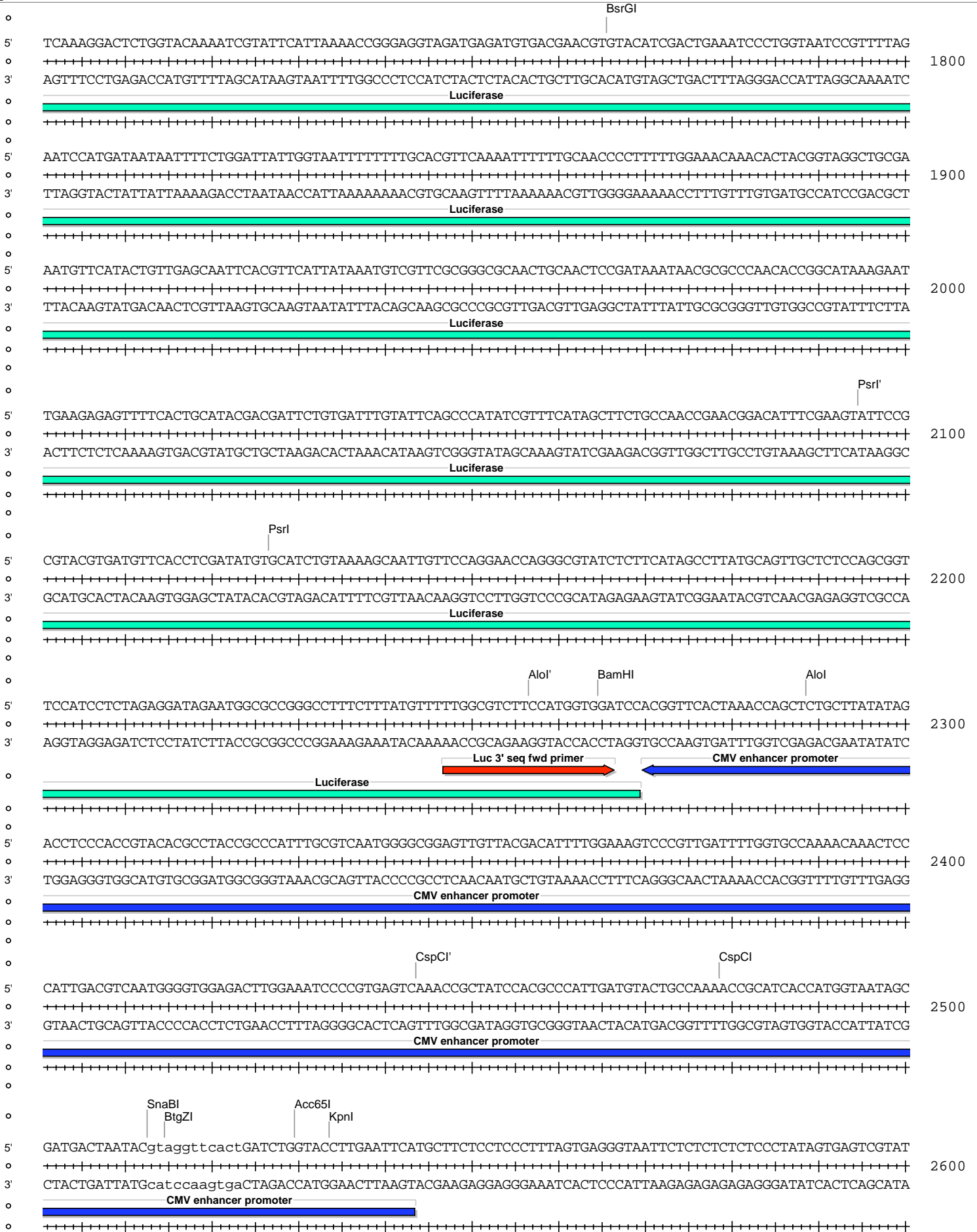


Absent Sites	0	AarI,AbstI,AfeI,AleI,Apal,Ascl,AsiSI,BaeI,BaeI',BarI,BarI',BbvCI,BclI,BlpI,BmgBI,Bpu10I,BstXI,BstZ17I,EcoICRI,Fall,Fall',FseI,FspAI,MauBI,MluI,MreI,NaeI,NgoMIV,NruI,PasI,PfIMi,PmeI,PmlI,PshAI,PspOMI,SacI,SanDI,SgrDI,SpeI,SrfI,Swal
Acc65I	1	2530 (6200)
Accl	1	5665 (6200)
AfIII	1	498 (6200)
AgeI	1	5833 (6200)
AhdI	1	3887 (6200)
AjuI	1	1376 (6200)
AjuI'	1	1408 (6200)
Alol	1	2289 (6200)
Alol'	1	2257 (6200)
AlwNI	1	3410 (6200)
ArsI	1	1077 (6200)
ArsI'	1	1109 (6200)
AvrII	1	5884 (6200)
BamHI	1	2265 (6200)
BglII	1	595 (6200)
BsaBI	1	5049 (6200)
BsgI	1	566 (6200)
BsmI	1	4962 (6200)
BsrGI	1	1766 (6200)
BssHII	1	5317 (6200)
Bsu36I	1	1644 (6200)
BtgZI	1	2515 (6200)
ClaI	1	893 (6200)
CspCI	1	2479 (6200)
CspCI'	1	2444 (6200)
DraIII	1	5208 (6200)
EcoNI	1	642 (6200)
EcoO109I	1	1078 (6200)
EcoRV	1	922 (6200)
HindIII	1	463 (6200)
HpaI	1	4948 (6200)
KpnI	1	2534 (6200)
MscI	1	5401 (6200)
NdeI	1	185 (6200)
NotI	1	407 (6200)
PacI	1	938 (6200)
PciI	1	2994 (6200)
PpuMI	1	1078 (6200)
PspXI	1	606 (6200)
Psrl	1	2127 (6200)
Psrl'	1	2095 (6200)
PstI	1	5856 (6200)
RsrII	1	5657 (6200)
SacII	1	5564 (6200)
Sall	1	5664 (6200)
SbfI	1	5856 (6200)
Scal	1	4367 (6200)
SfiI	1	5938 (6200)
SgrAI	1	828 (6200)
SnaBI	1	2513 (6200)
SspI	1	4691 (6200)
Tth111I	1	5733 (6200)
XcmI	1	1526 (6200)
XhoI	1	606 (6200)
XmnI	1	4486 (6200)

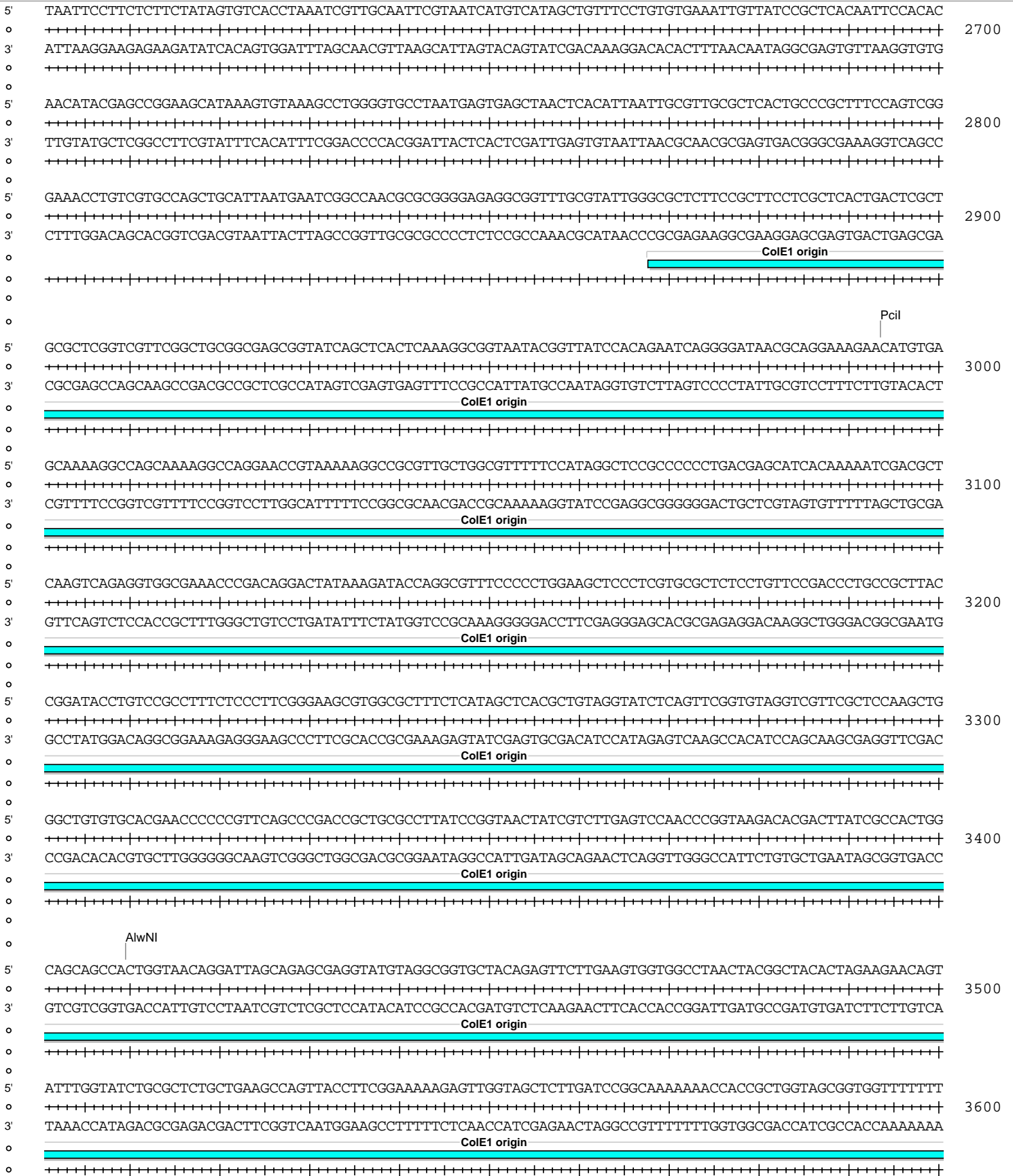
pMIR-REP-dCMV WASF3 82-207







pMIR-REP-dCMV WASF3 82-207



pMIR-REP-dCMV WASF3 82-207

