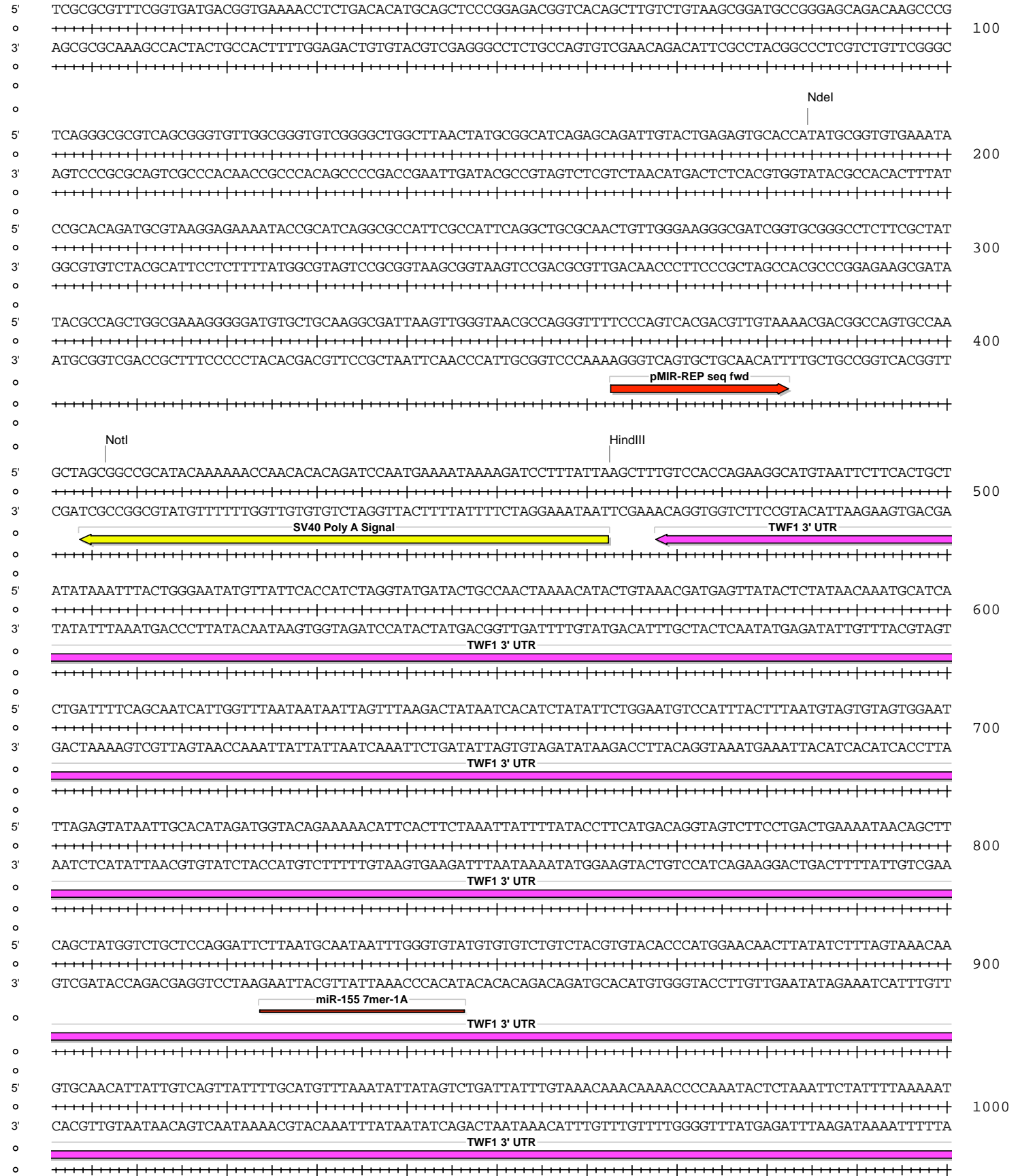


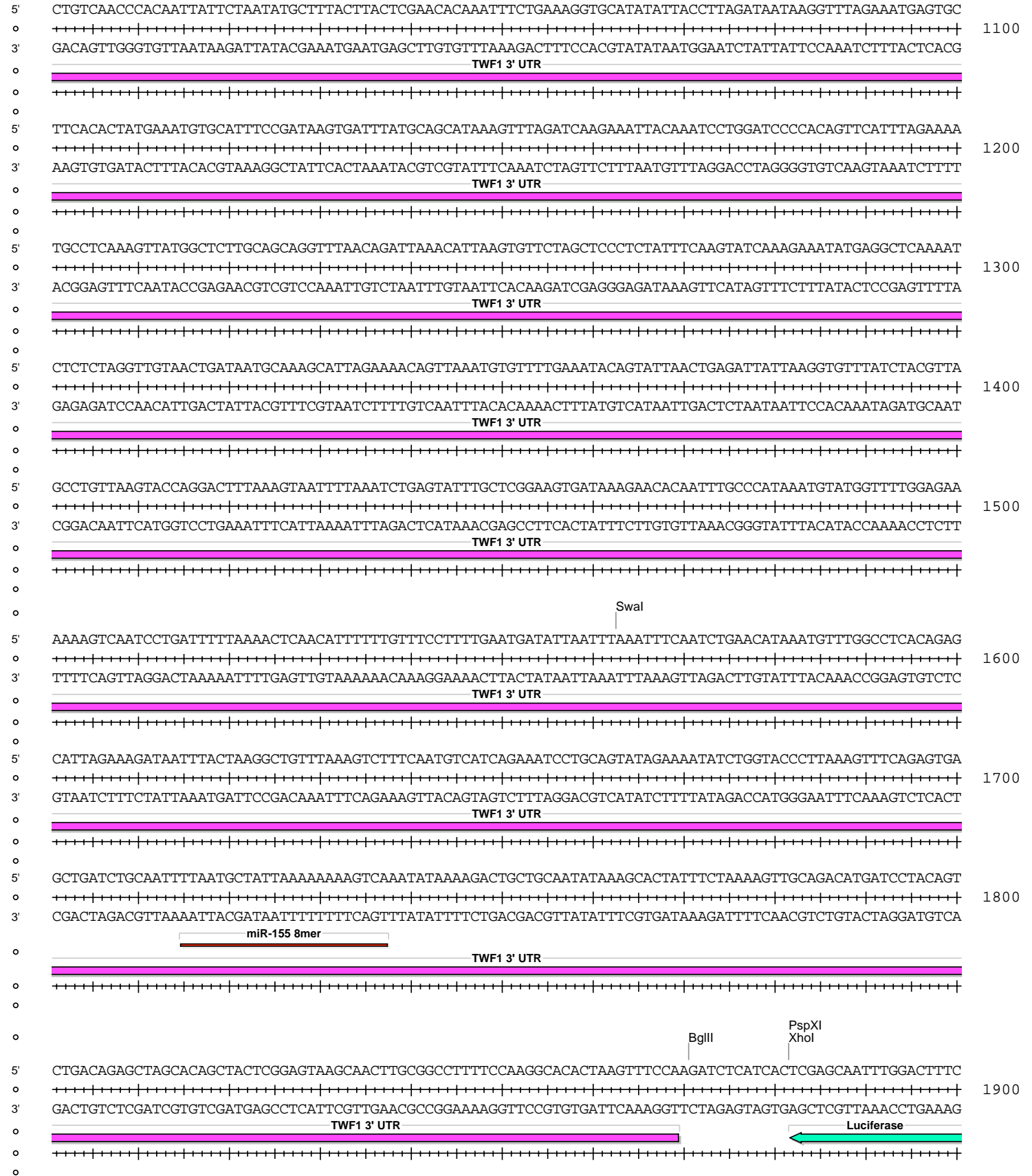
pMIR-REP-dCMV-TWF1 3' UTR (415-1816) wt

Absent Sites	0	AarI,AbstI,AfeI,AfII,AleI,ApaI,AscI,AsiSI,BaeI,BaeI',BarI,BarI',BbvCI,BclI,BplI,BmgBI,Bpu10I,BsgI,BstXI,BstZ17I,EcoICRI,Fall,Fall',FseI,FspAI,MauBI,MluI,MreI,NaeI,NgoMIV,NruI,NotI,PasI,PfIMI,PmeI,PmlI,PshAI,PspOMI,SacI,SanDI,SgrDI,SpeI,SrfI
AgeI	1	7109 (7476)
AjuI	1	2652 (7476)
AjuI'	1	2684 (7476)
AlaI	1	3565 (7476)
AlaI'	1	3533 (7476)
AlwNI	1	4686 (7476)
Arsl	1	2353 (7476)
Arsl'	1	2385 (7476)
AvrII	1	7160 (7476)
BglII	1	1871 (7476)
BsaBI	1	6325 (7476)
BsmI	1	6238 (7476)
BssHII	1	6593 (7476)
Bsu36I	1	2920 (7476)
BtgZI	1	3791 (7476)
ClaI	1	2169 (7476)
CspCI	1	3755 (7476)
CspCI'	1	3720 (7476)
DraIII	1	6484 (7476)
EcoNI	1	1918 (7476)
EcoO109I	1	2354 (7476)
EcoRV	1	2198 (7476)
HindIII	1	463 (7476)
HpaI	1	6224 (7476)
MscI	1	6677 (7476)
NdeI	1	185 (7476)
NotI	1	407 (7476)
PacI	1	2214 (7476)
PciI	1	4270 (7476)
PpuMI	1	2354 (7476)
PspXI	1	1882 (7476)
PsrI	1	3403 (7476)
PsrI'	1	3371 (7476)
RsrII	1	6933 (7476)
SacII	1	6840 (7476)
SalI	1	6940 (7476)
SbfI	1	7132 (7476)
Scal	1	5643 (7476)
SfiI	1	7214 (7476)
SgrAI	1	2104 (7476)
SnaBI	1	3789 (7476)
Swal	1	1563 (7476)
Tth111I	1	7009 (7476)
XcmI	1	2802 (7476)
XhoI	1	1882 (7476)
XmnI	1	5762 (7476)

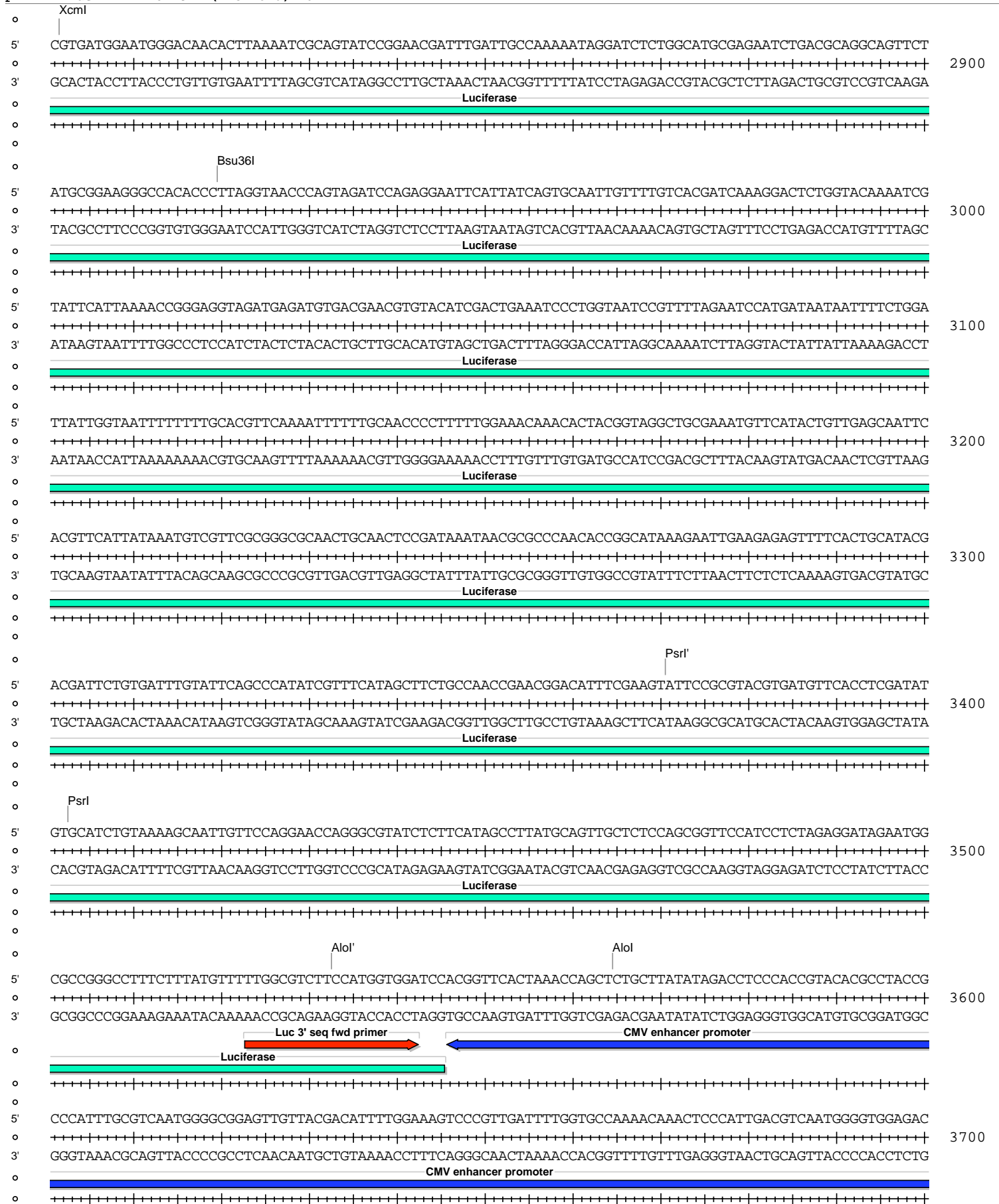
pMIR-REP-dCMV-TWF1 3' UTR (415-1816) wt

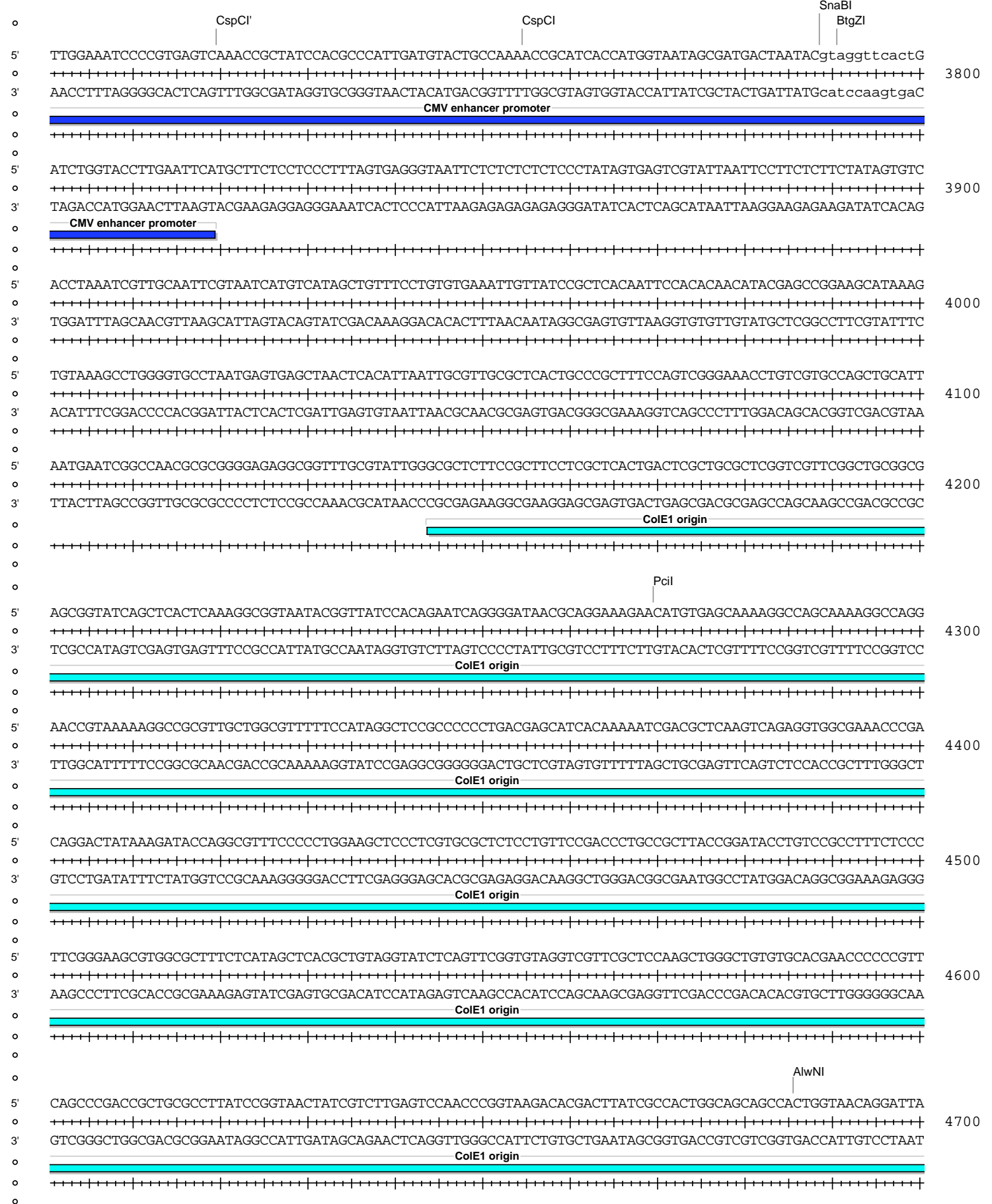


pMIR-REP-dCMV-TWF1 3' UTR (415-1816) wt









pMIR-REP-dCMV-TWF1 3' UTR (415-1816) wt

