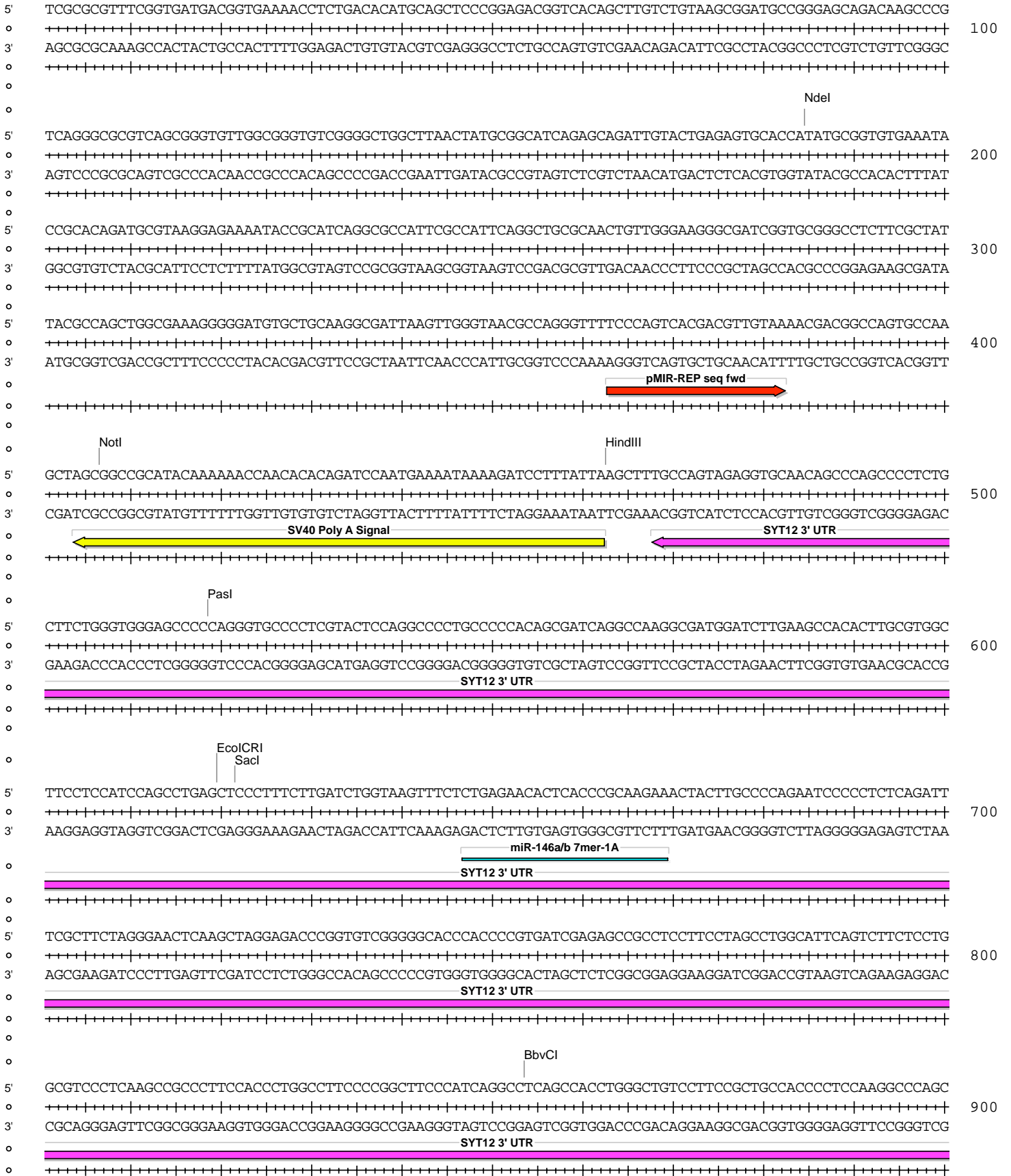
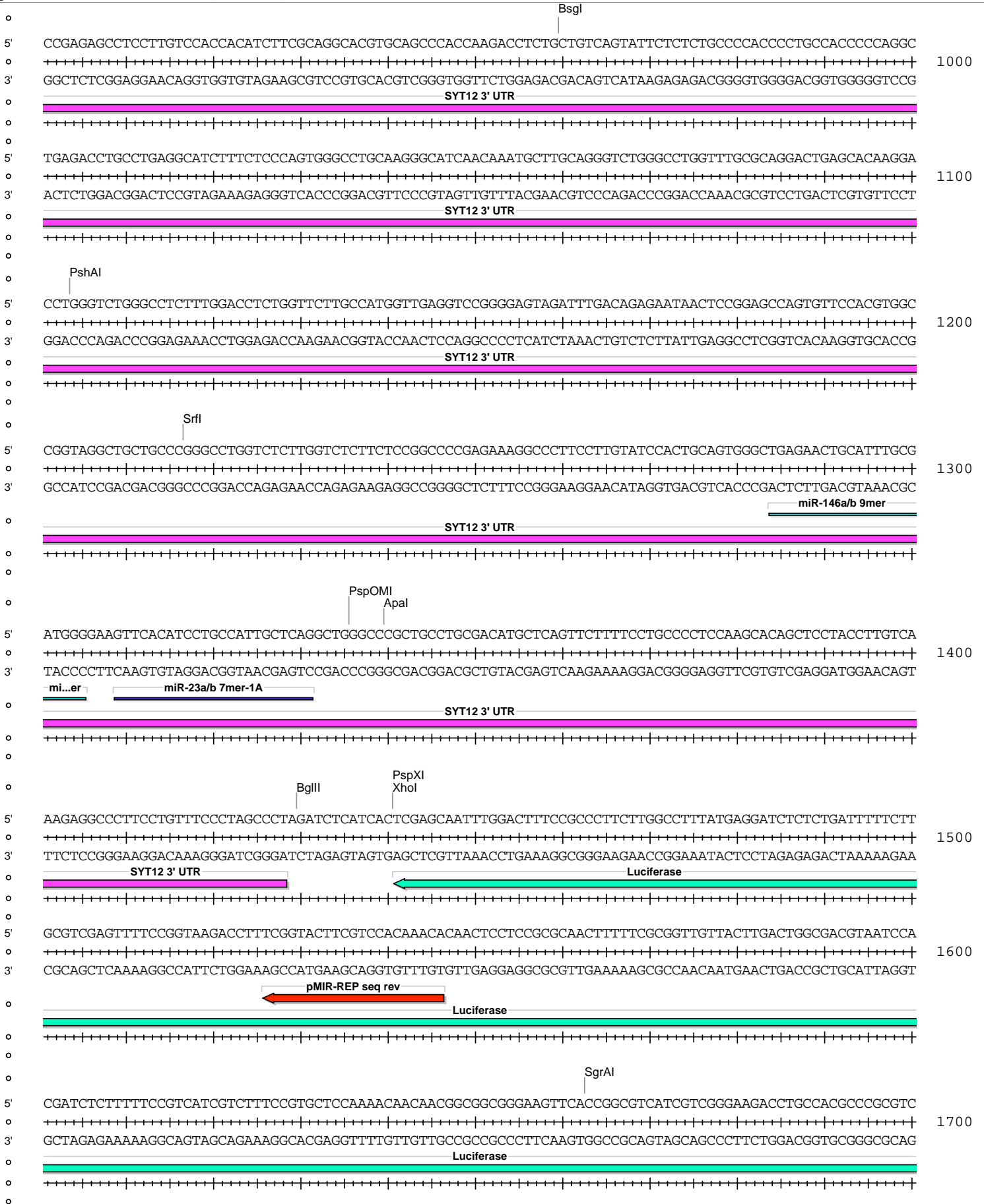


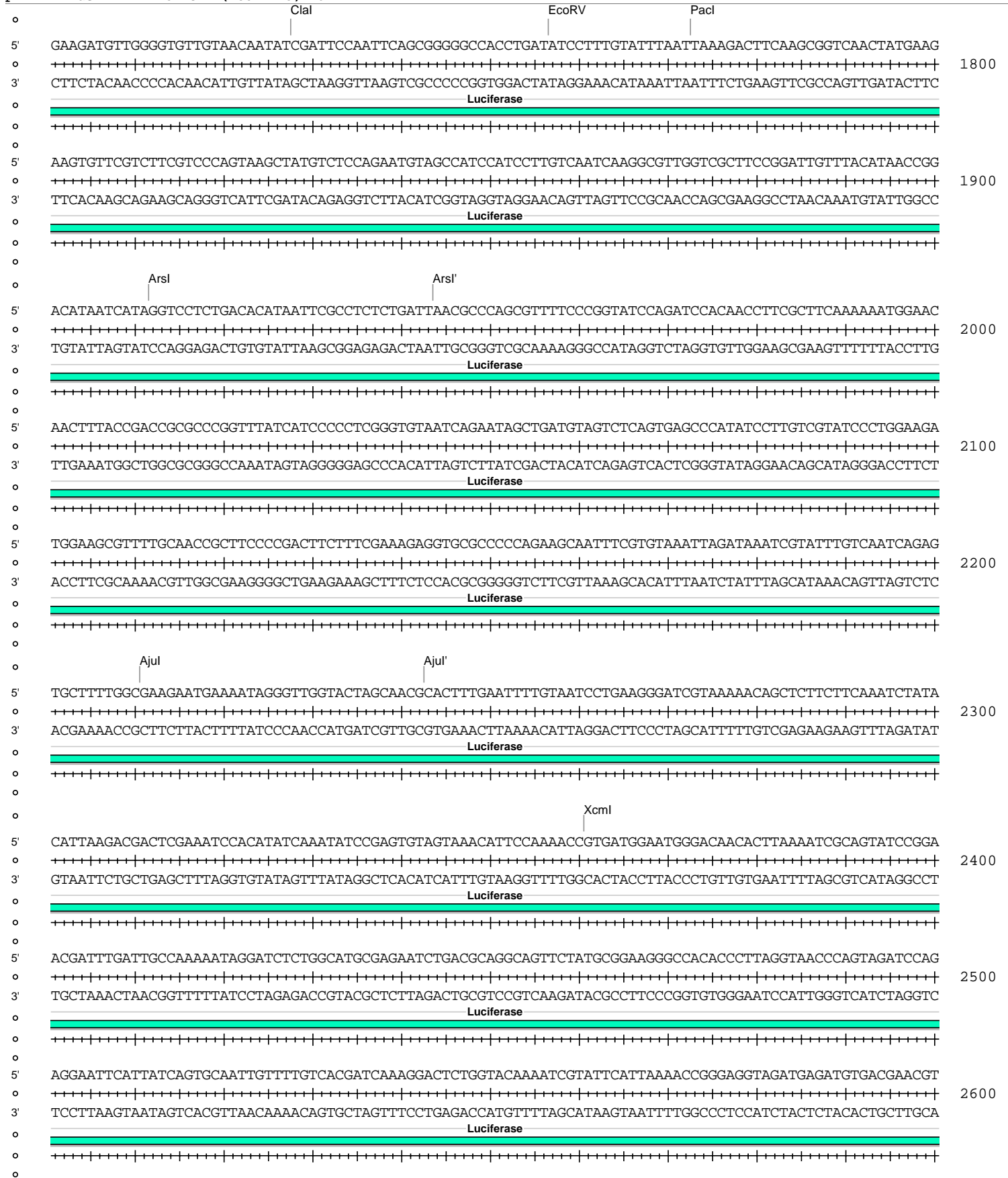
## pMIR-REP-dCMV-SYT12 3' UTR (453-1413) wt

Absent Sites	0	AarI,AbstI,AfeI,AfIII,Ascl,AsiSI,BaeI,BaeI',BarI,BarI',BclI,BplI,BmgBI,BstZ17I,FseI,FspAI,MauBI,MluI,MreI,NaeI,NgoMIV,NruI,PfIMI,PmeI,SanDI,SgrDI,SpeI,Swal
Acc65I	1	3365 (7035)
Accl	1	6500 (7035)
AgeI	1	6668 (7035)
AjuI	1	2211 (7035)
AjuI'	1	2243 (7035)
ApaI	1	1340 (7035)
Arsl	1	1912 (7035)
Arsl'	1	1944 (7035)
AvrII	1	6719 (7035)
BamHI	1	3100 (7035)
BbvCI	1	854 (7035)
BglII	1	1430 (7035)
BsaBI	1	5884 (7035)
BsgI	1	960 (7035)
BsrGI	1	2601 (7035)
BssHII	1	6152 (7035)
ClaI	1	1728 (7035)
CspCI	1	3314 (7035)
CspCI'	1	3279 (7035)
EcoICRI	1	620 (7035)
EcoRV	1	1757 (7035)
HindIII	1	463 (7035)
HpaI	1	5783 (7035)
KpnI	1	3369 (7035)
MscI	1	6236 (7035)
NdeI	1	185 (7035)
NotI	1	407 (7035)
PacI	1	1773 (7035)
PasI	1	519 (7035)
PciI	1	3829 (7035)
PshAI	1	1104 (7035)
PspOMI	1	1336 (7035)
PspXI	1	1441 (7035)
Psrl	1	2962 (7035)
Psrl'	1	2930 (7035)
RsrII	1	6492 (7035)
SacI	1	622 (7035)
SacII	1	6399 (7035)
Sall	1	6499 (7035)
SbfI	1	6691 (7035)
Scal	1	5202 (7035)
SfiI	1	6773 (7035)
SgrAI	1	1663 (7035)
SnaBI	1	3348 (7035)
SrfI	1	1217 (7035)
SspI	1	5526 (7035)
Tth111I	1	6568 (7035)
XcmI	1	2361 (7035)
XhoI	1	1441 (7035)
XmnI	1	5321 (7035)

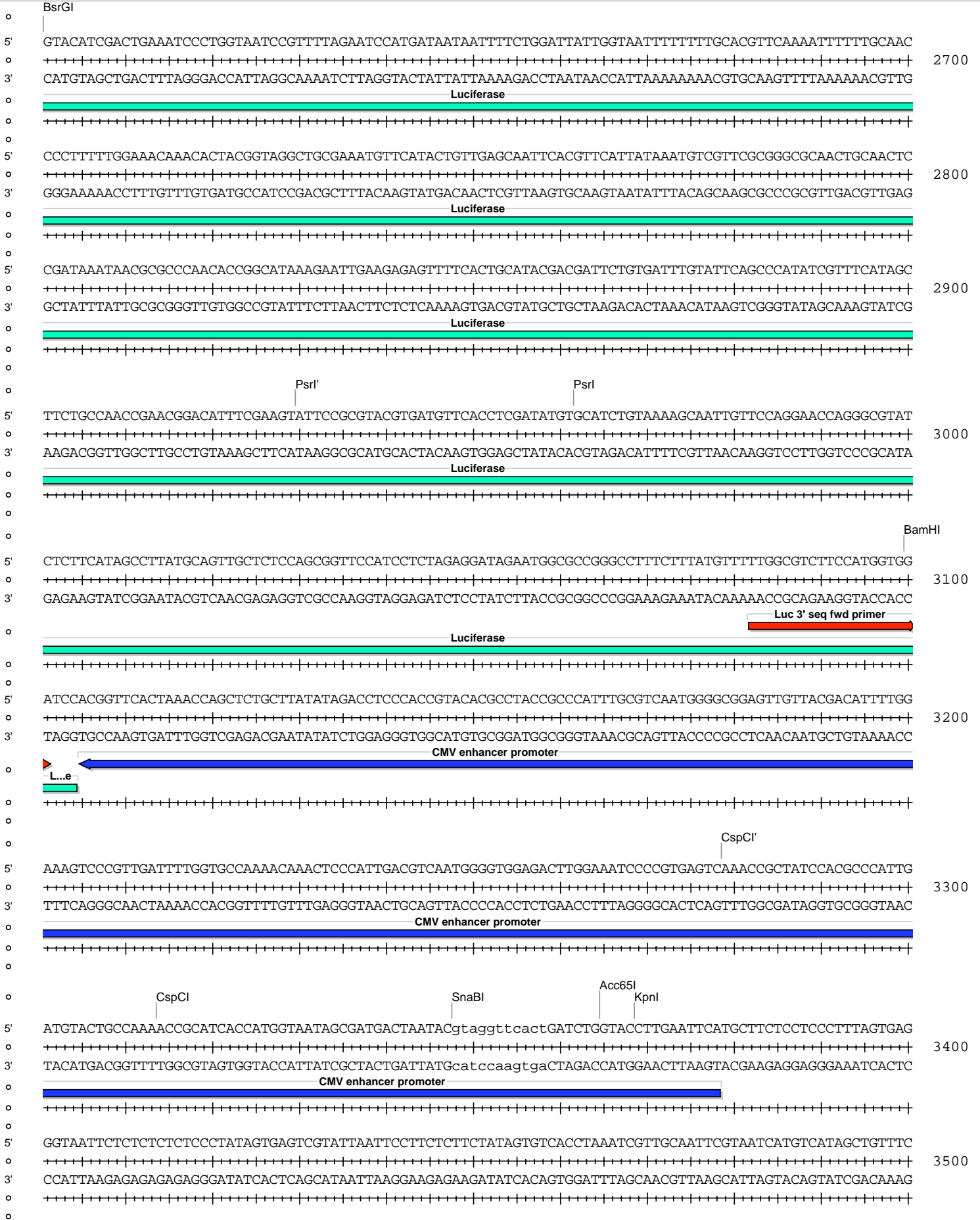
pMIR-REP-dCMV-SYT12 3' UTR (453-1413) wt



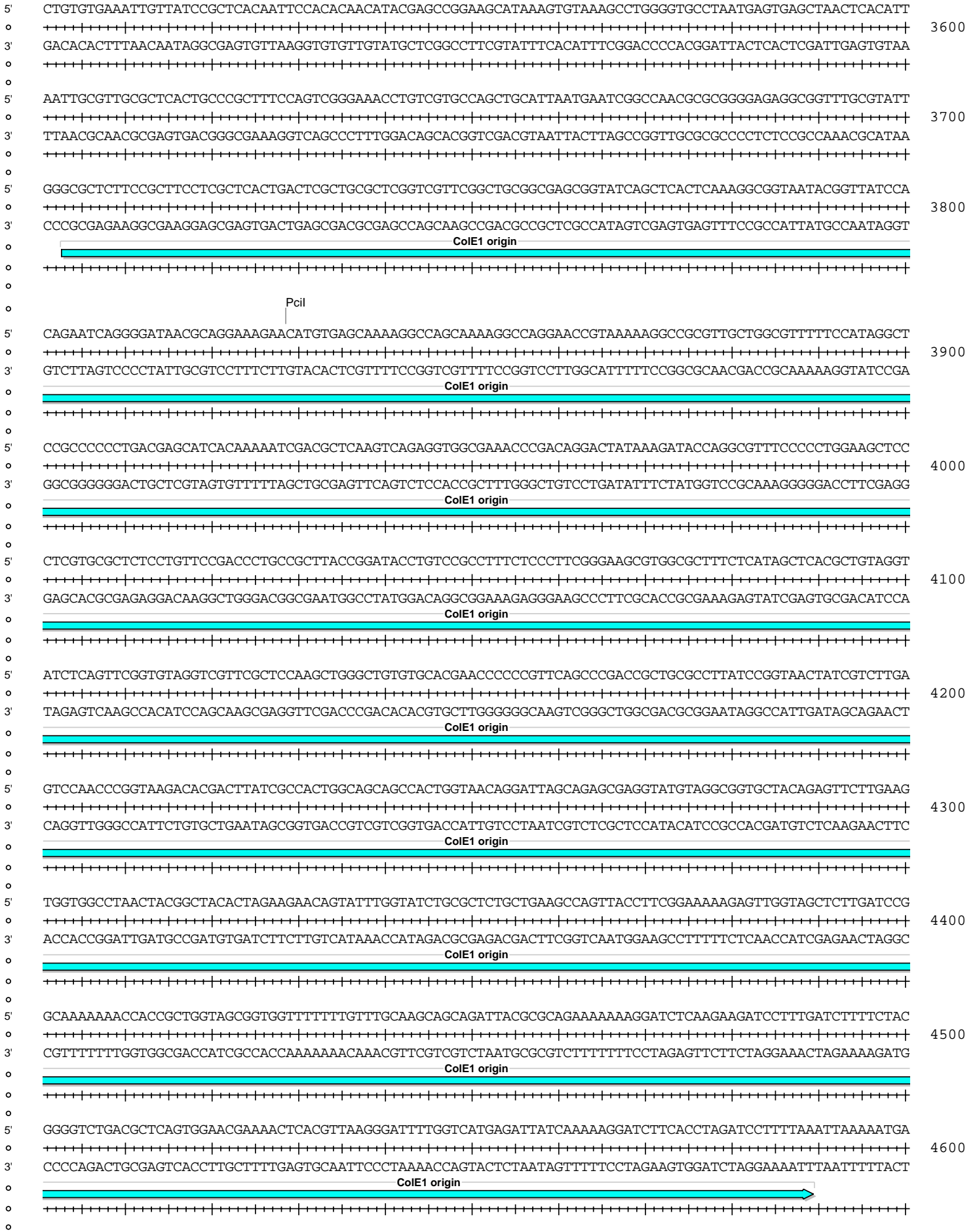




pMIR-REP-dCMV-SYT12 3' UTR (453-1413) wt



pMIR-REP-dCMV-SYT12 3' UTR (453-1413) wt







pMIR-REP-dCMV-SYT12 3' UTR (453-1413) wt



