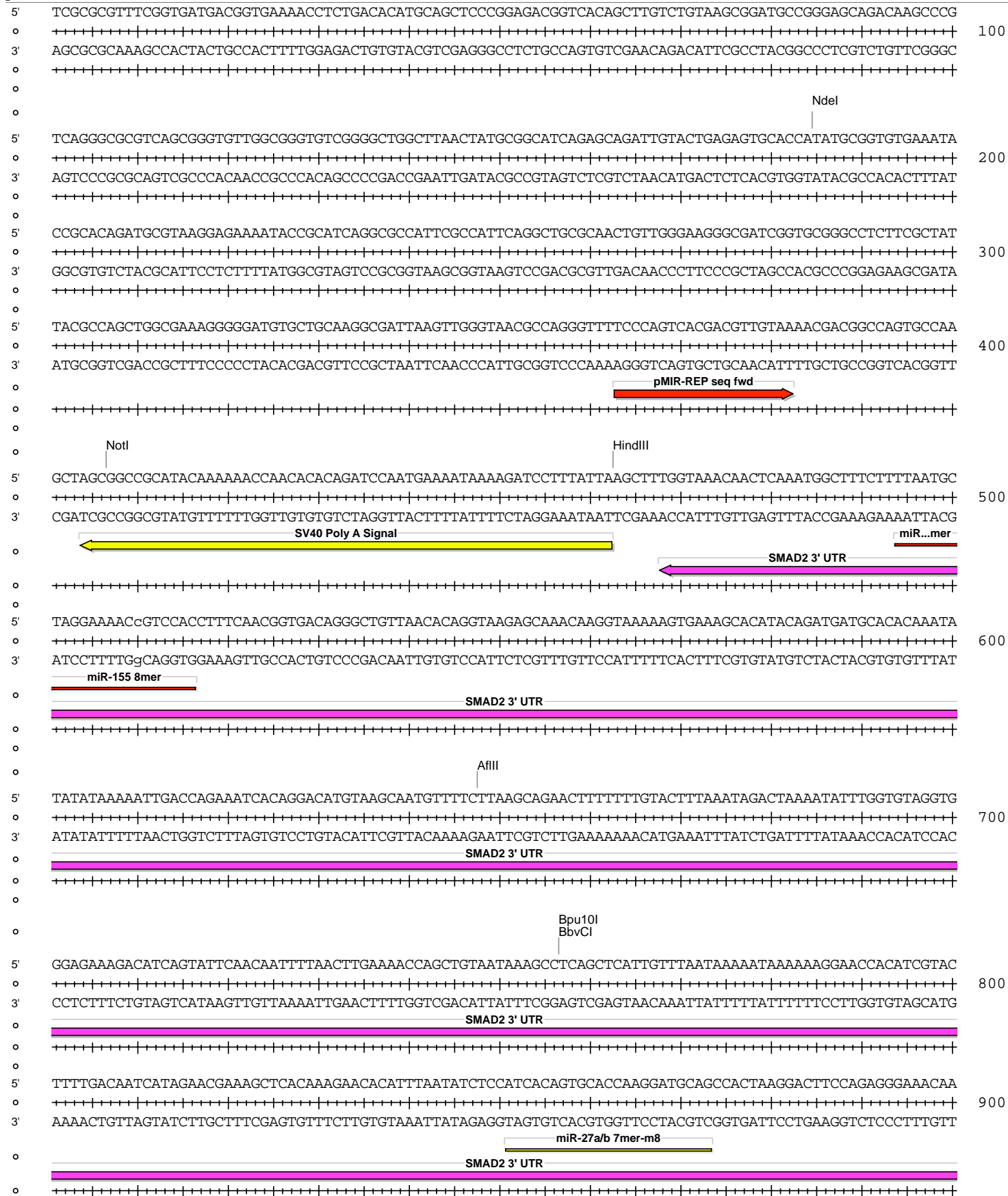
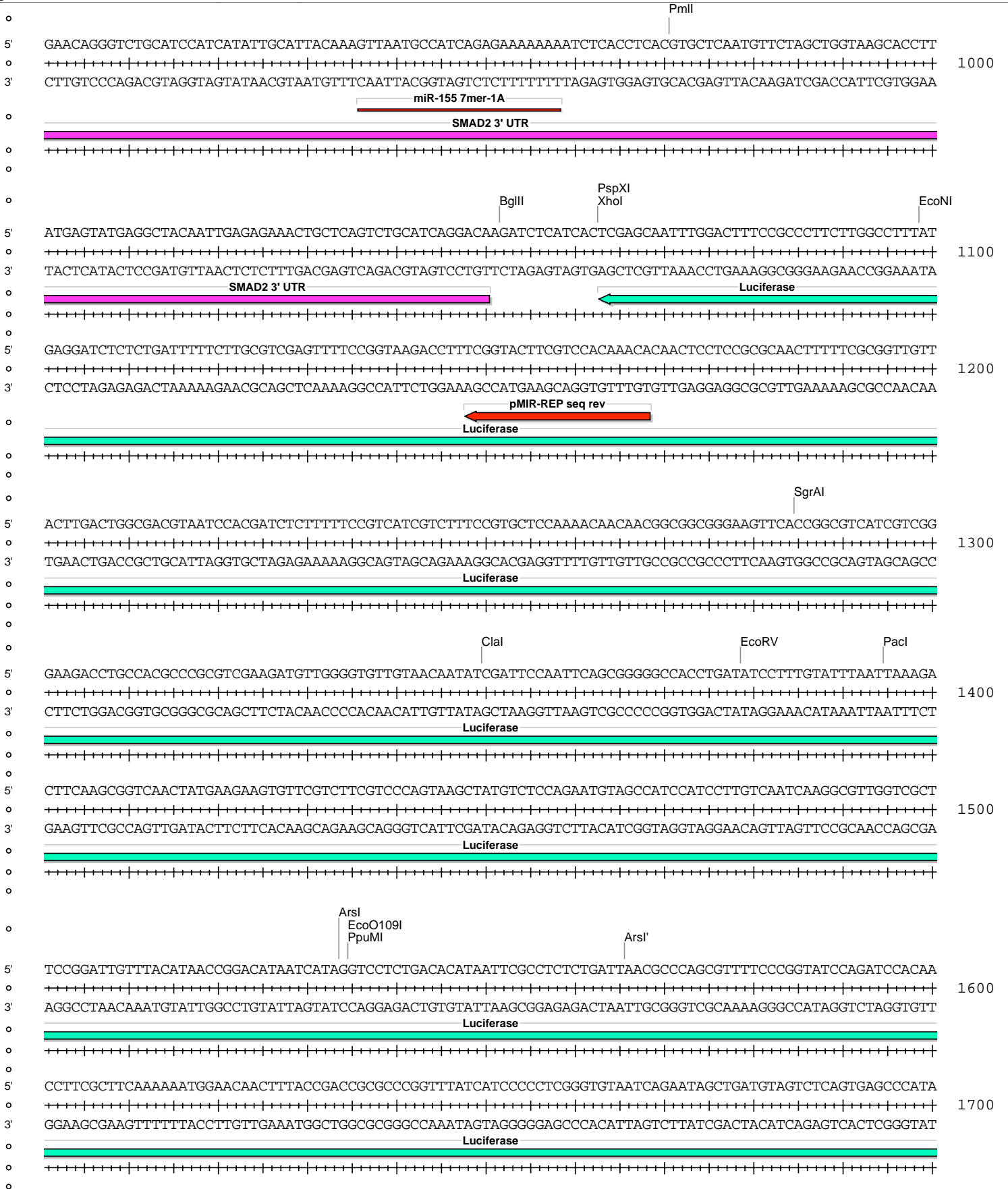


## pMIR-REP-dCMV-SMAD2 3' UTR (8145-8727) T to Cmut

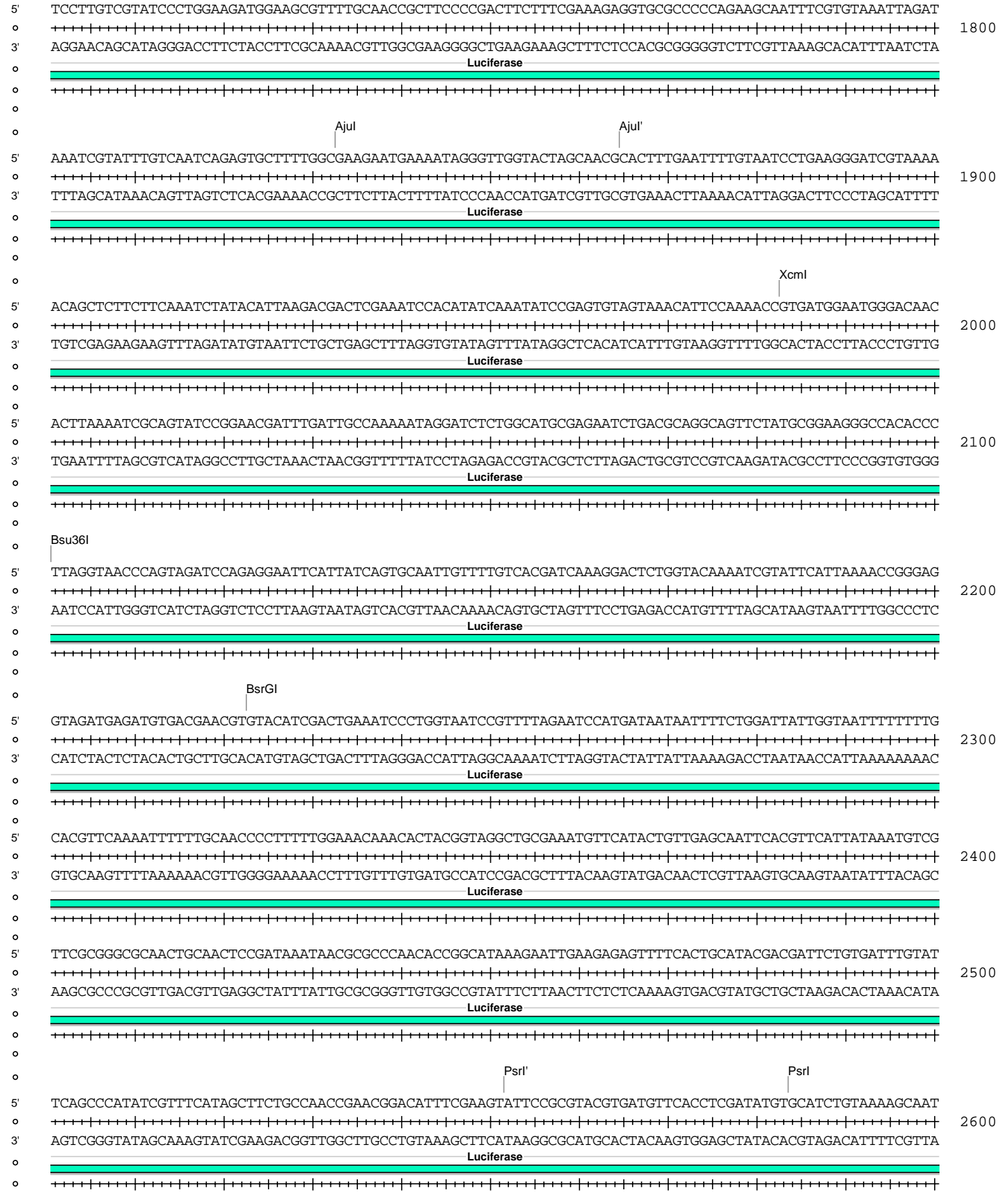
Absent Sites	0	AarI,AbstI,AfeI,AleI,Apal,AscI,AsiSI,BaeI,BaeI',BarI,BarI',BclI,BlpI,BmgBI,BsgI,BstXI,BstZ17I,EcoICRI,FseI,FspAI,MauBI,MluI,MreI,Nael,NgoMIV,NruI,PasI,PfIMI,PmeI,PshAI,PspOMI,SacI,SanDI,SgrDI,SpeI,SrfI,Swal
Acc65I	1	2987 (6657)
AccI	1	6122 (6657)
AfIII	1	648 (6657)
AgeI	1	6290 (6657)
AhdI	1	4344 (6657)
AjuI	1	1833 (6657)
AjuI'	1	1865 (6657)
Alol	1	2746 (6657)
Alol'	1	2714 (6657)
Arsl	1	1534 (6657)
Arsl'	1	1566 (6657)
AvrII	1	6341 (6657)
BamHI	1	2722 (6657)
BbvCI	1	757 (6657)
BglII	1	1052 (6657)
Bpu10I	1	757 (6657)
BsaBI	1	5506 (6657)
BsmI	1	5419 (6657)
BsrGI	1	2223 (6657)
BssHII	1	5774 (6657)
Bsu36I	1	2101 (6657)
BtgZI	1	2972 (6657)
ClaI	1	1350 (6657)
CspCI	1	2936 (6657)
CspCI'	1	2901 (6657)
DraIII	1	5665 (6657)
EcoNI	1	1099 (6657)
EcoO109I	1	1535 (6657)
EcoRV	1	1379 (6657)
HindIII	1	463 (6657)
KpnI	1	2991 (6657)
MscI	1	5858 (6657)
NdeI	1	185 (6657)
NotI	1	407 (6657)
Pacl	1	1395 (6657)
PmlI	1	971 (6657)
PpuMI	1	1535 (6657)
PspXI	1	1063 (6657)
Psrl	1	2584 (6657)
Psrl'	1	2552 (6657)
PstI	1	6313 (6657)
RsrII	1	6114 (6657)
SacII	1	6021 (6657)
Sall	1	6121 (6657)
SbfI	1	6313 (6657)
Scal	1	4824 (6657)
SfiI	1	6395 (6657)
SgrAI	1	1285 (6657)
SnaBI	1	2970 (6657)
Tth111I	1	6190 (6657)
XcmI	1	1983 (6657)
XhoI	1	1063 (6657)
Xmnl	1	4943 (6657)

pMIR-REP-dCMV-SMAD2 3' UTR (8145-8727) T to Cmut





pMIR-REP-dCMV-SMAD2 3' UTR (8145-8727) T to Cmut

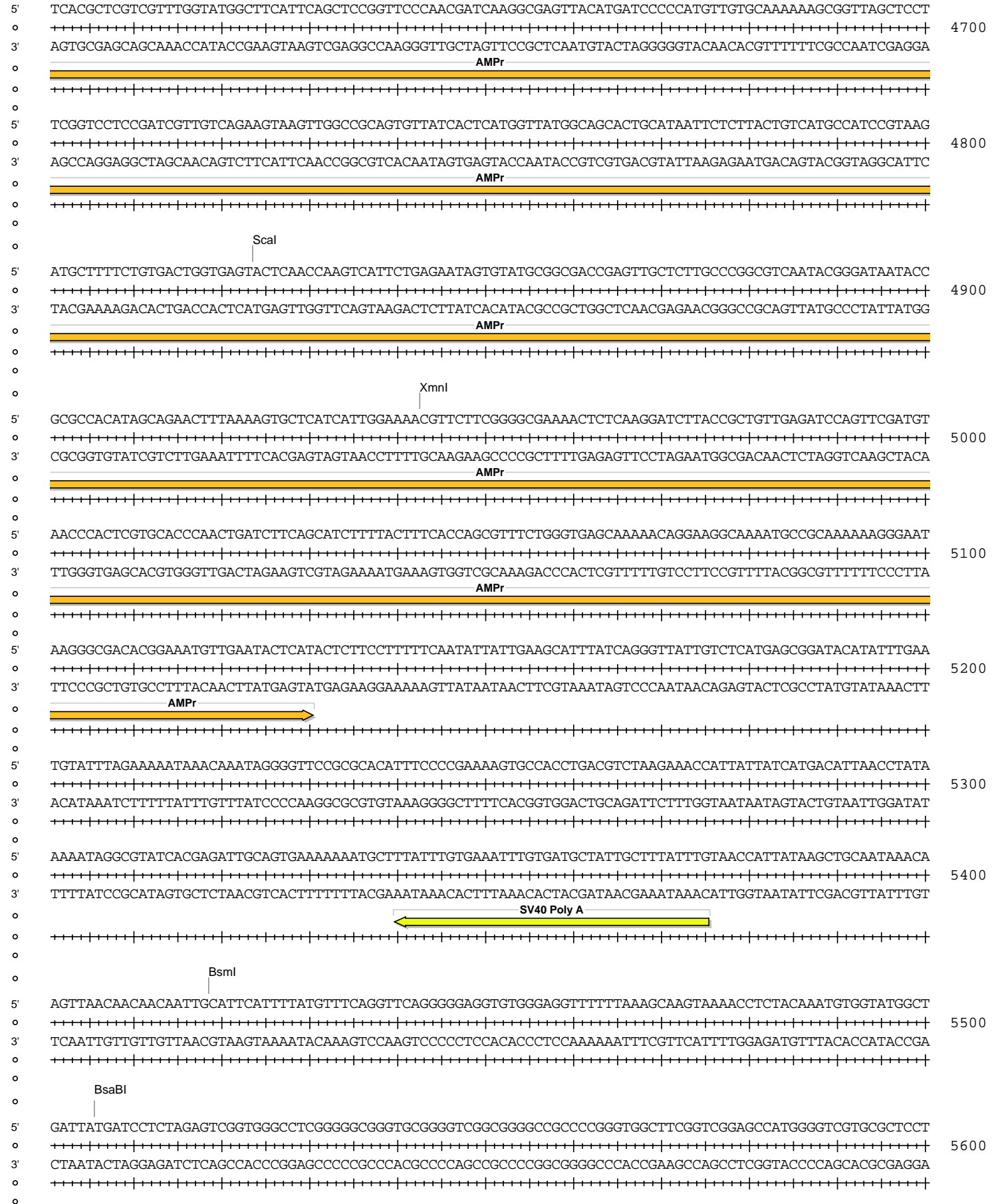


pMIR-REP-dCMV-SMAD2 3' UTR (8145-8727) T to Cmut

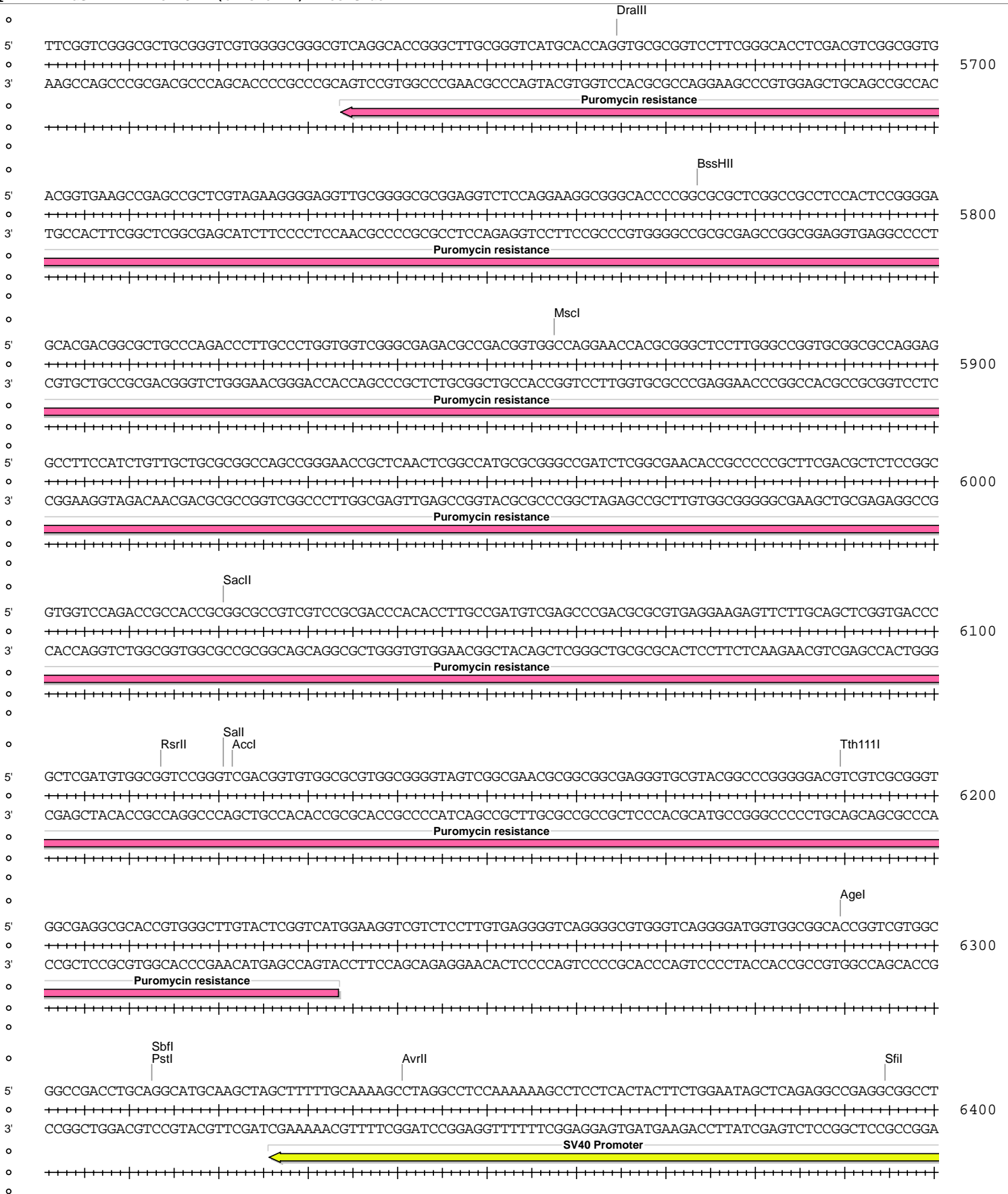




pMIR-REP-dCMV-SMAD2 3' UTR (8145-8727) T to Cmut







pMIR-REP-dCMV-SMAD2 3' UTR (8145-8727) T to Cmut

