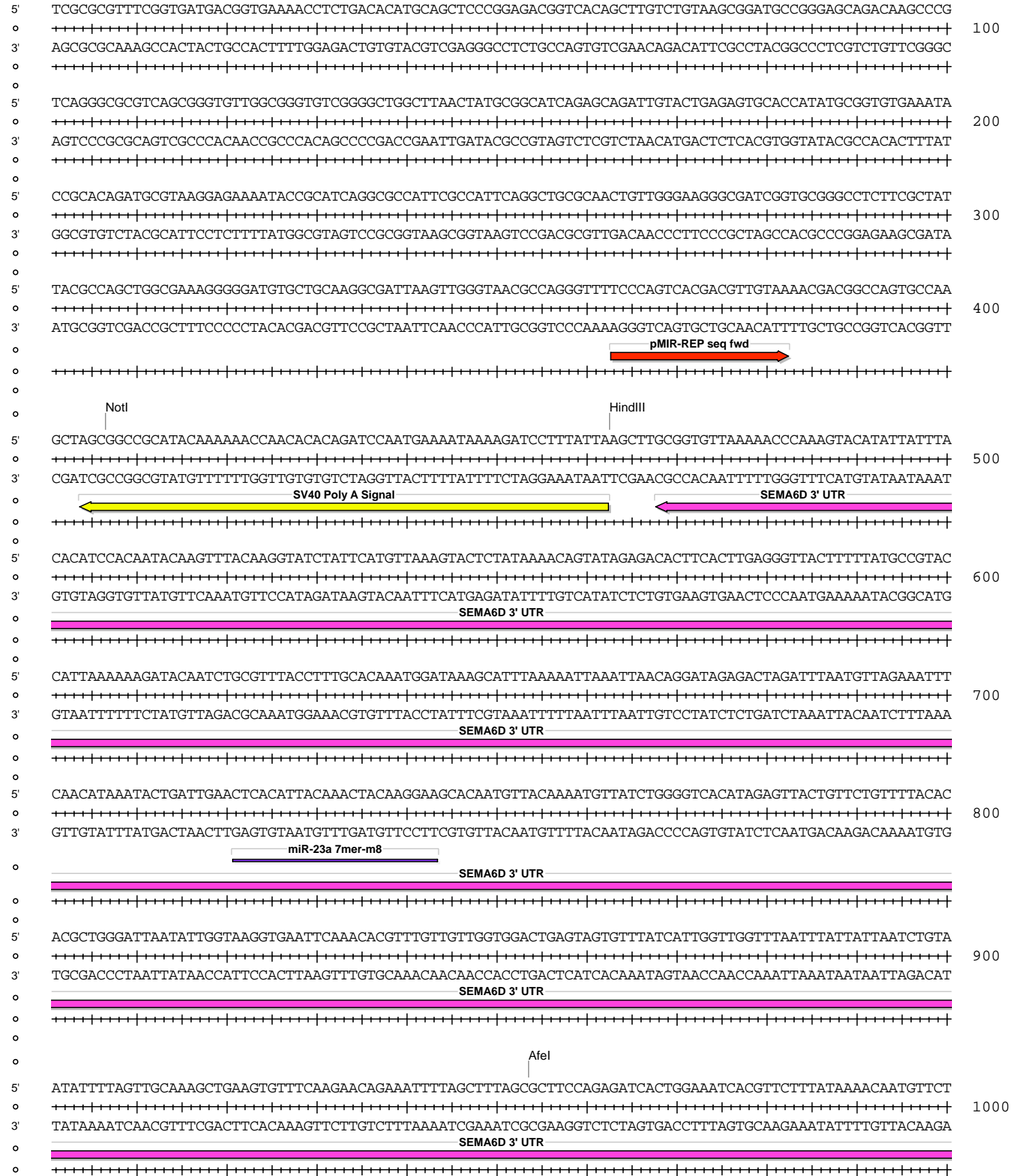


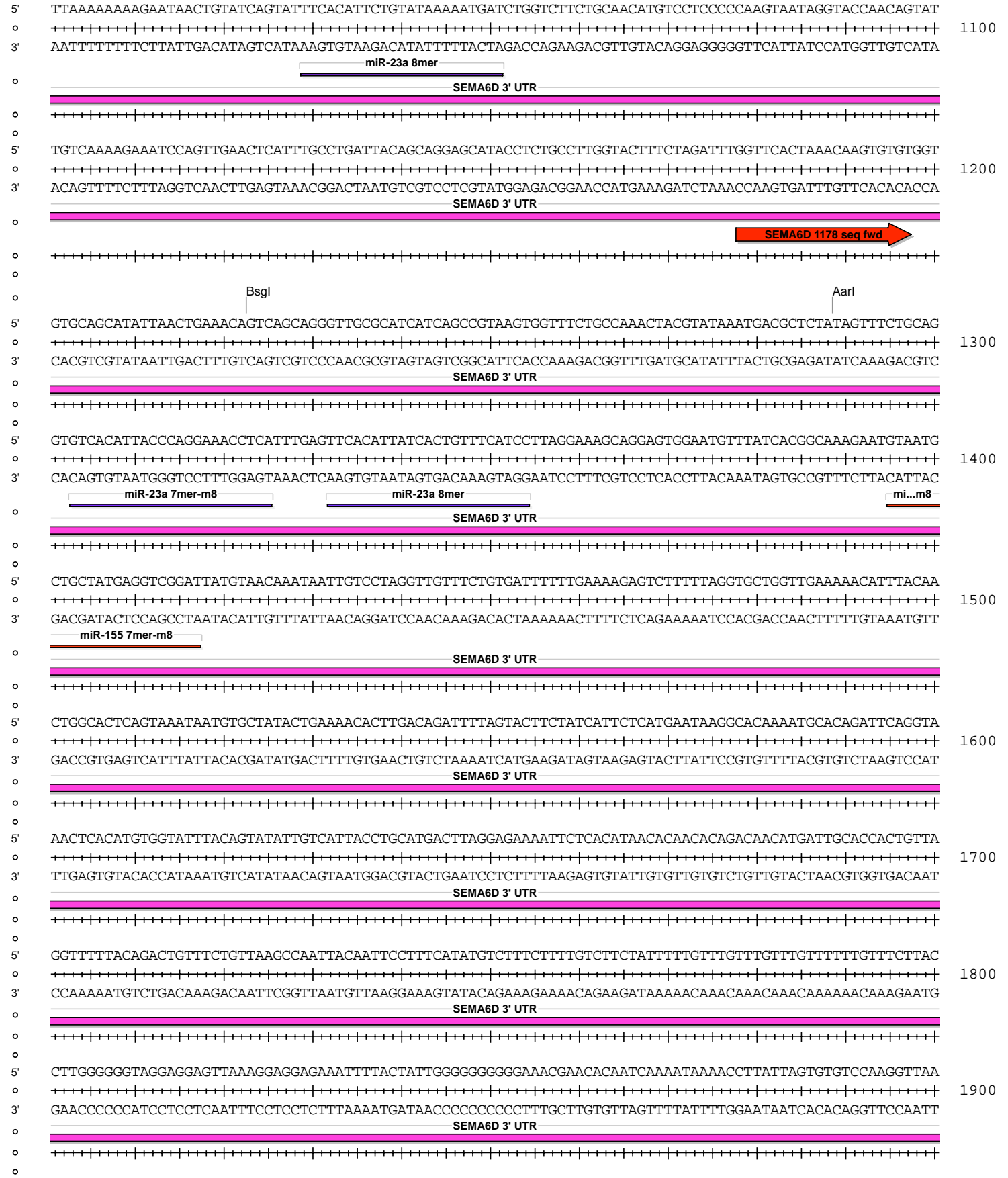
pMIR-REP-dCMV-SEMA6D 3' UTR (206-2403) wt

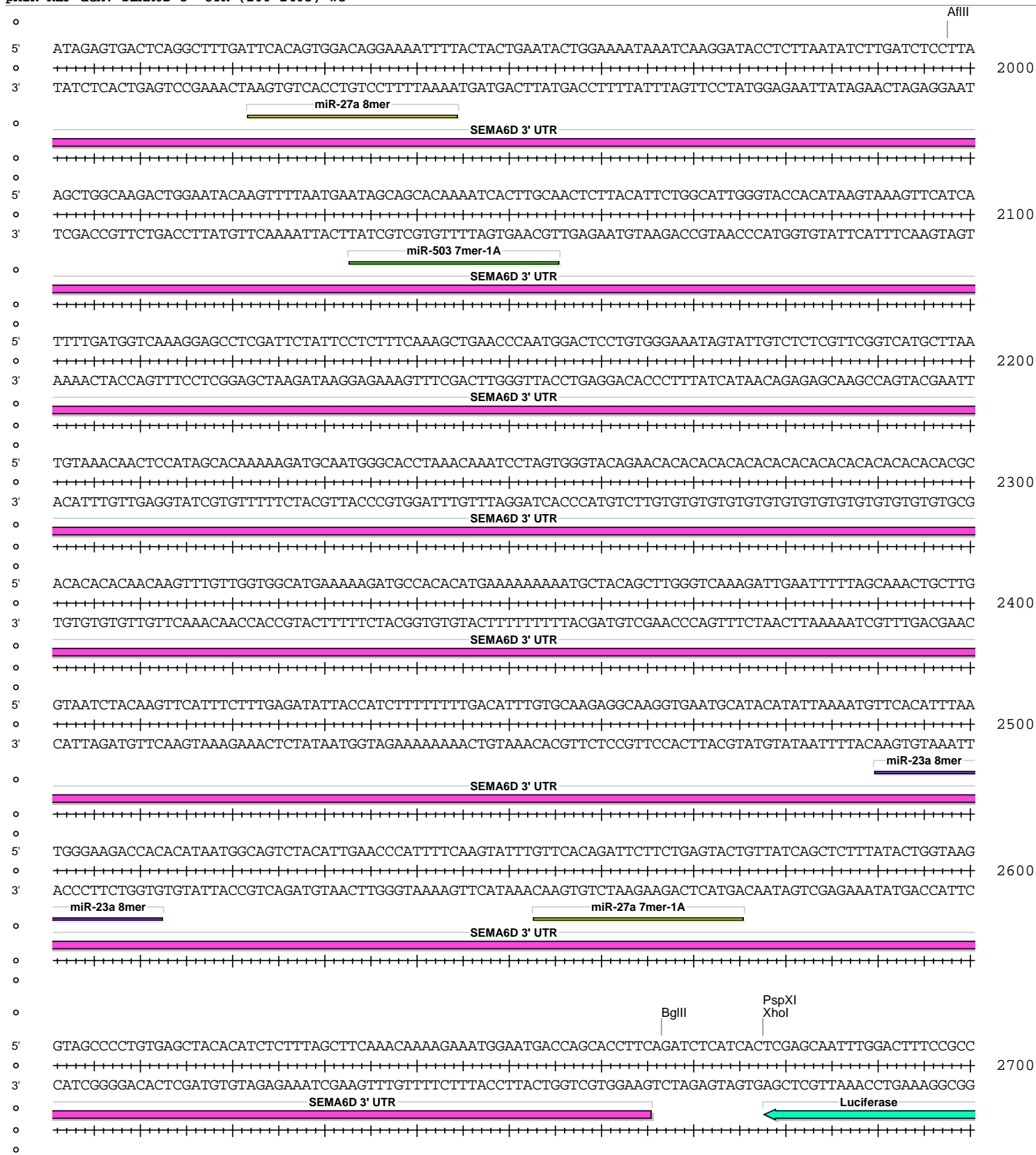
Absent Sites	0	AbsI,AleI,Apal,AscI,AsiSI,BaeI,BaeI',BamHI,BamHI',BbvCI,BclI,BlnI,BmgBI,Bpu10I,BstXI,BstZ17I,EcoICRI,Fall,Fall',FseI,FspAI,MauBI,MluI,MreI,NaeI,NgoMIV,NruI,PasI,PfIMI,PmeI,PmlI,PshAI,PspOMI,SacI,SanDI,SgrDI,SpeI,SrfI,Swal
AarI	1	1289 (8272)
AfeI	1	954 (8272)
AflII	1	1998 (8272)
AgeI	1	7905 (8272)
AhdI	1	5959 (8272)
AjuI	1	3448 (8272)
AjuI'	1	3480 (8272)
AlwNI	1	5482 (8272)
BamHI	1	4337 (8272)
BglII	1	2667 (8272)
BsaBI	1	7121 (8272)
BsgI	1	1223 (8272)
BsrGI	1	3838 (8272)
BssHII	1	7389 (8272)
BtgZI	1	4587 (8272)
ClaI	1	2965 (8272)
CspCI	1	4551 (8272)
CspCI'	1	4516 (8272)
DraIII	1	7280 (8272)
EcoNI	1	2714 (8272)
EcoO109I	1	3150 (8272)
EcoRV	1	2994 (8272)
HindIII	1	463 (8272)
HpaI	1	7020 (8272)
MscI	1	7473 (8272)
NotI	1	407 (8272)
PacI	1	3010 (8272)
PpuMI	1	3150 (8272)
PspXI	1	2678 (8272)
RsrII	1	7729 (8272)
SacII	1	7636 (8272)
SalI	1	7736 (8272)
SbfI	1	7928 (8272)
SfiI	1	8010 (8272)
SgrAI	1	2900 (8272)
Tth111I	1	7805 (8272)
XcmI	1	3598 (8272)
XhoI	1	2678 (8272)

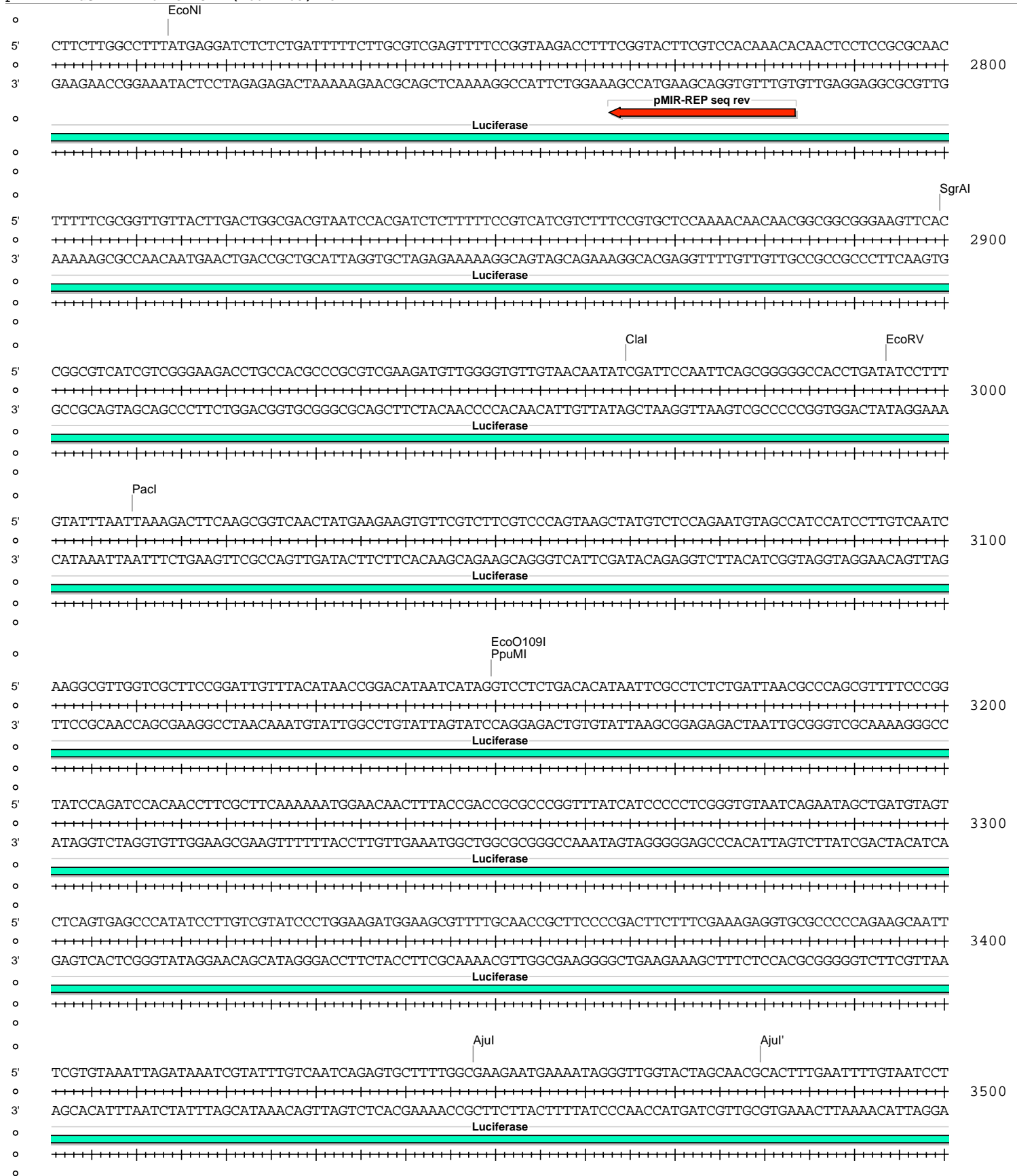
pMIR-REP-dCMV-SEMA6D 3' UTR (206-2403) wt

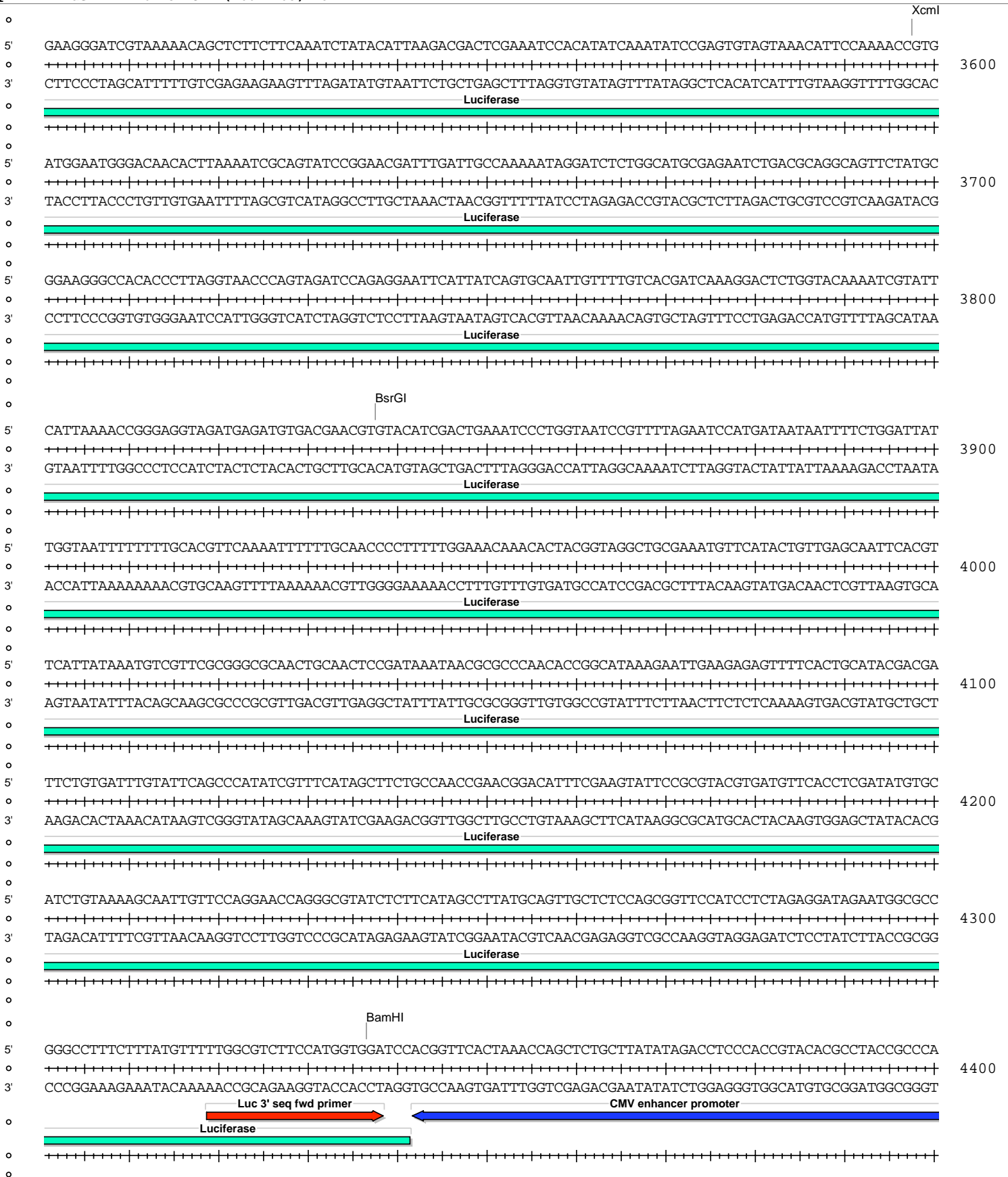


pMIR-REP-dCMV-SEMA6D 3' UTR (206-2403) wt

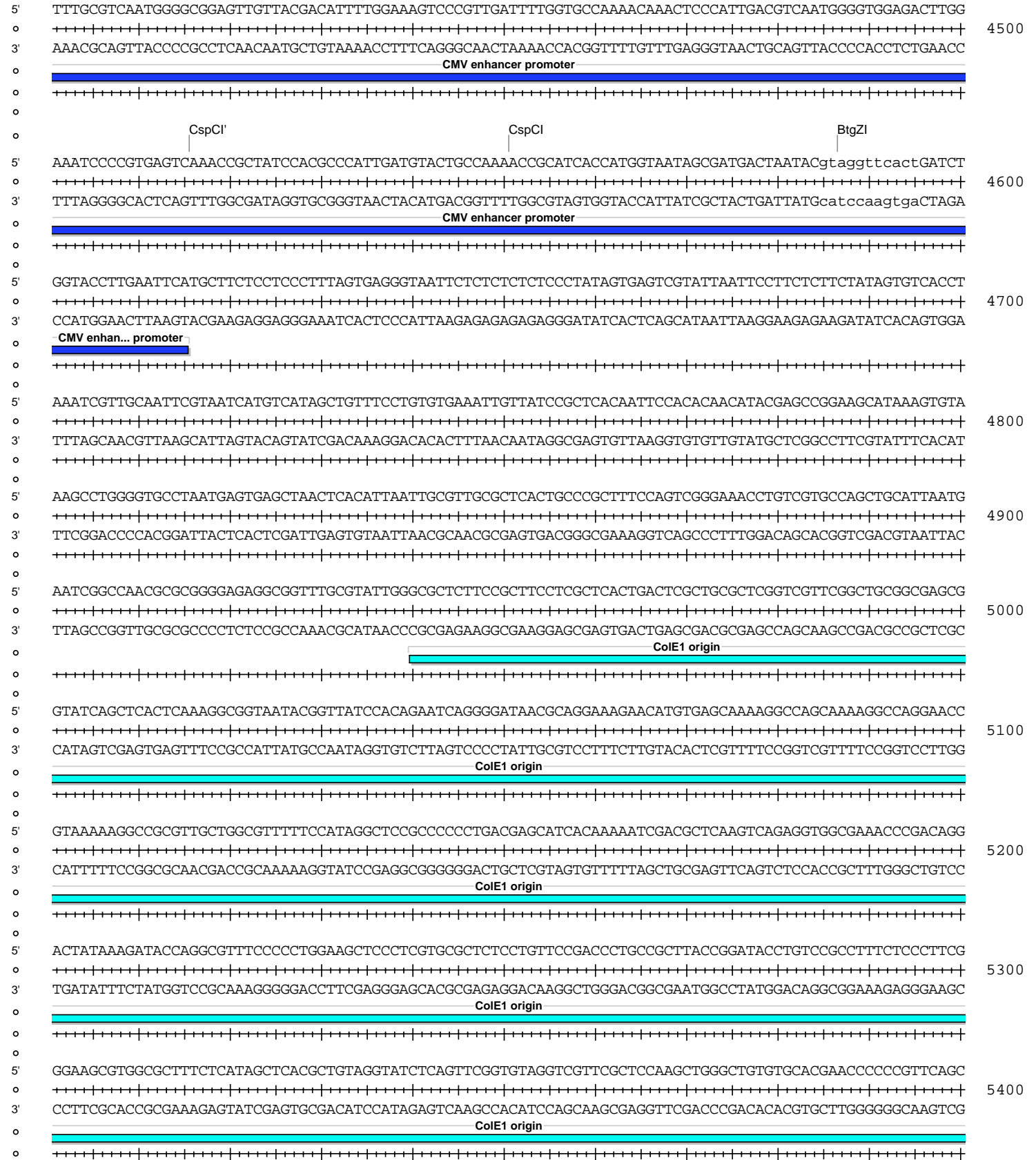


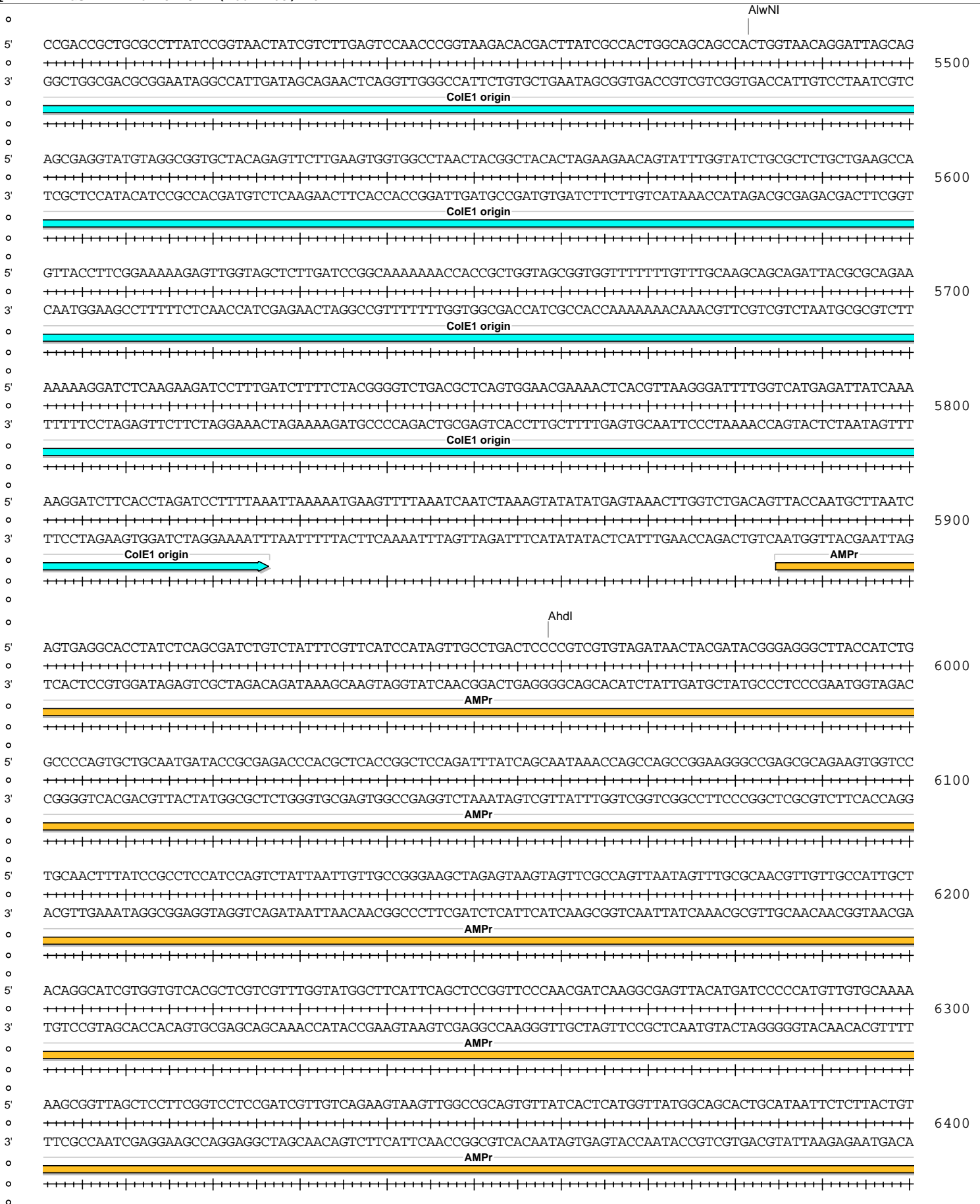






pMIR-REP-dCMV-SEMA6D 3' UTR (206-2403) wt





pMIR-REP-dCMV-SEMA6D 3' UTR (206-2403) wt

