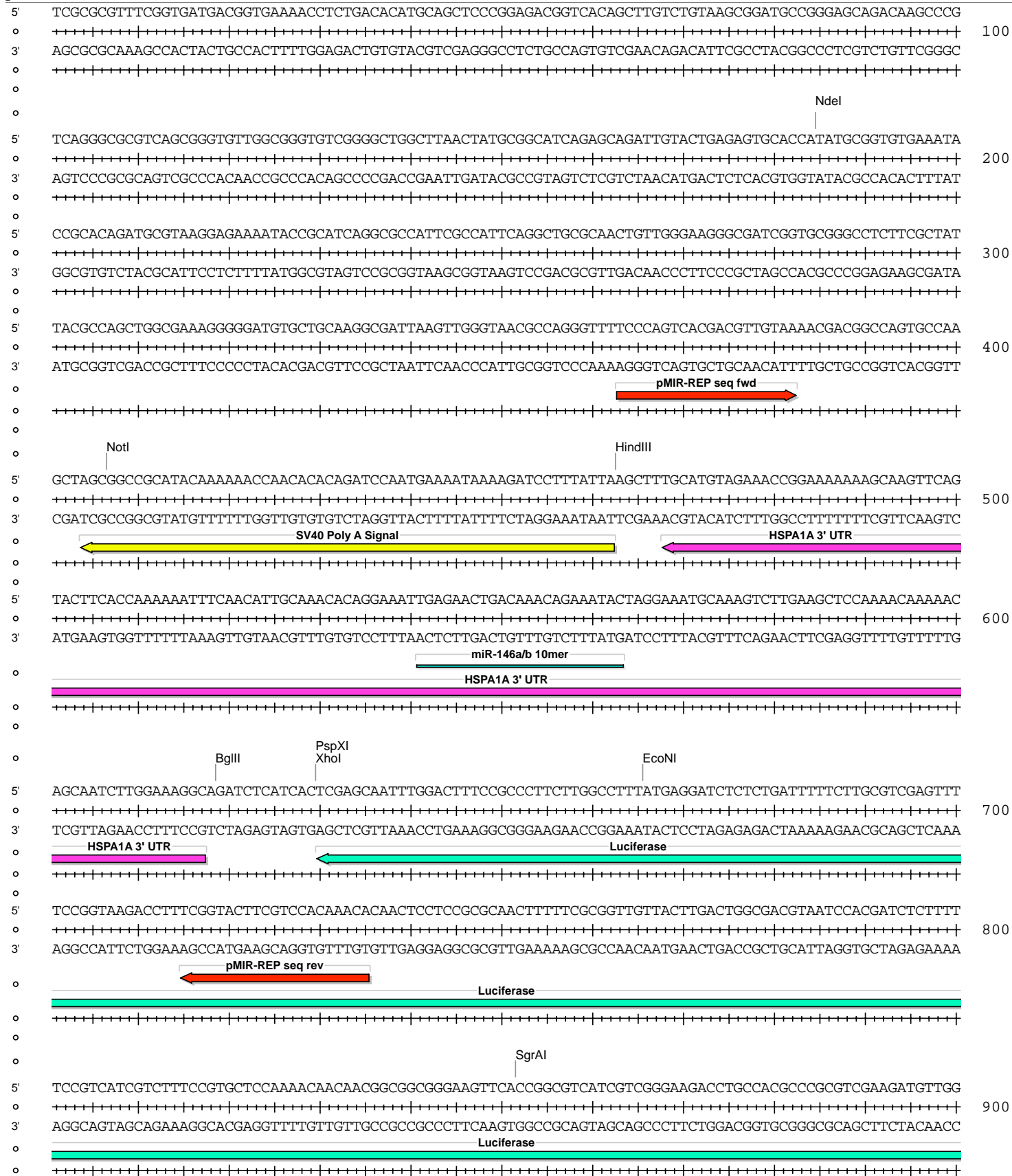
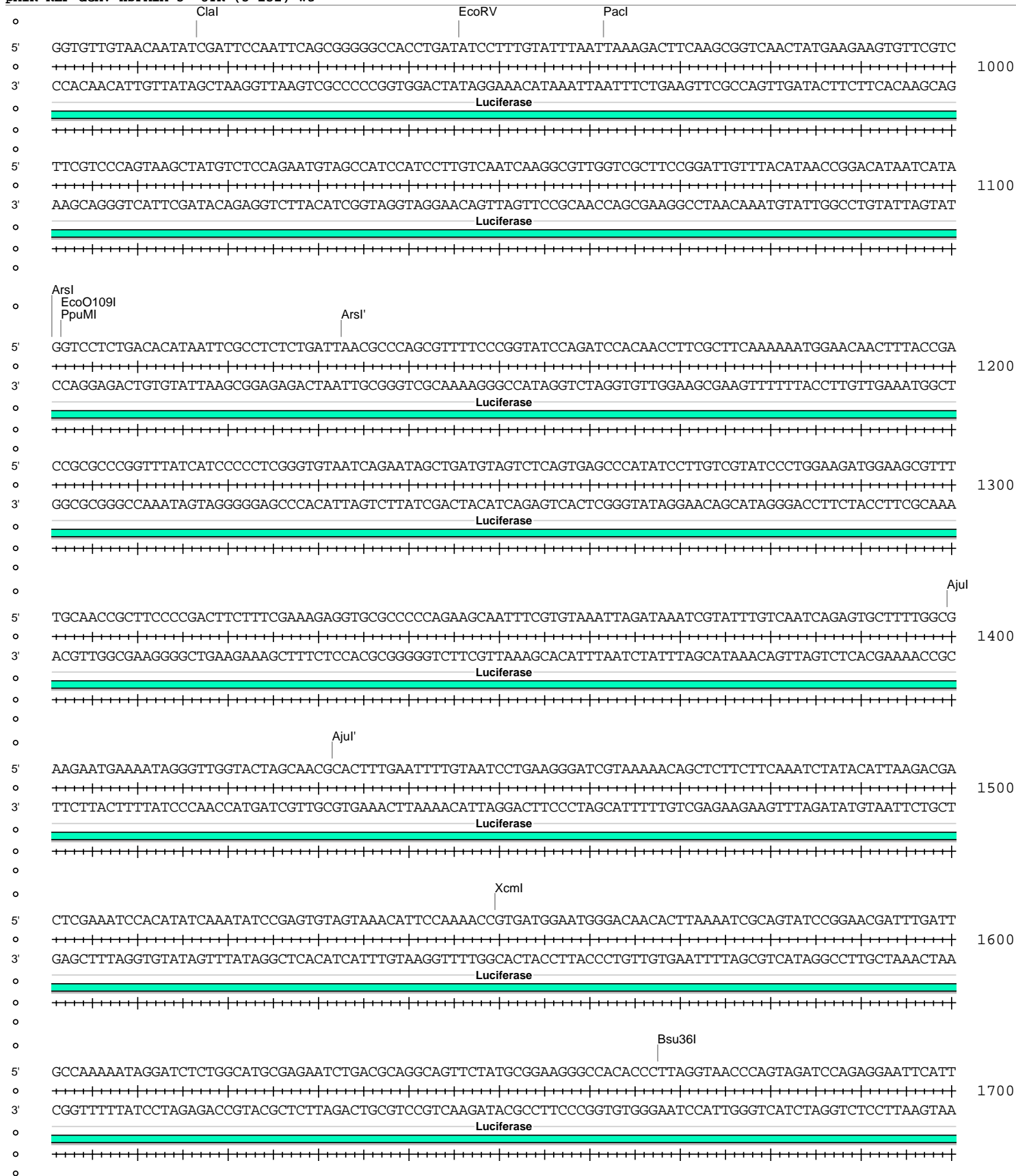
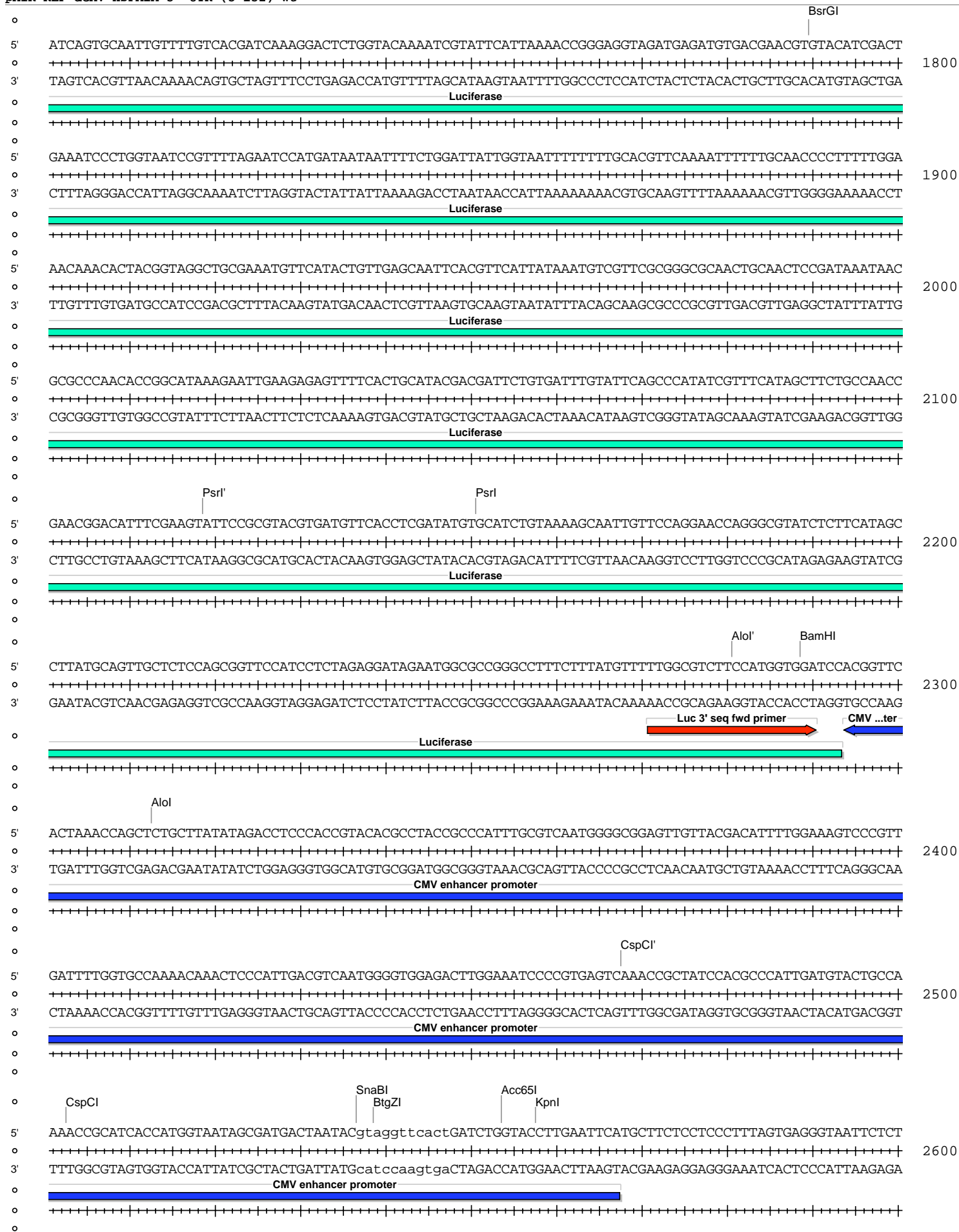


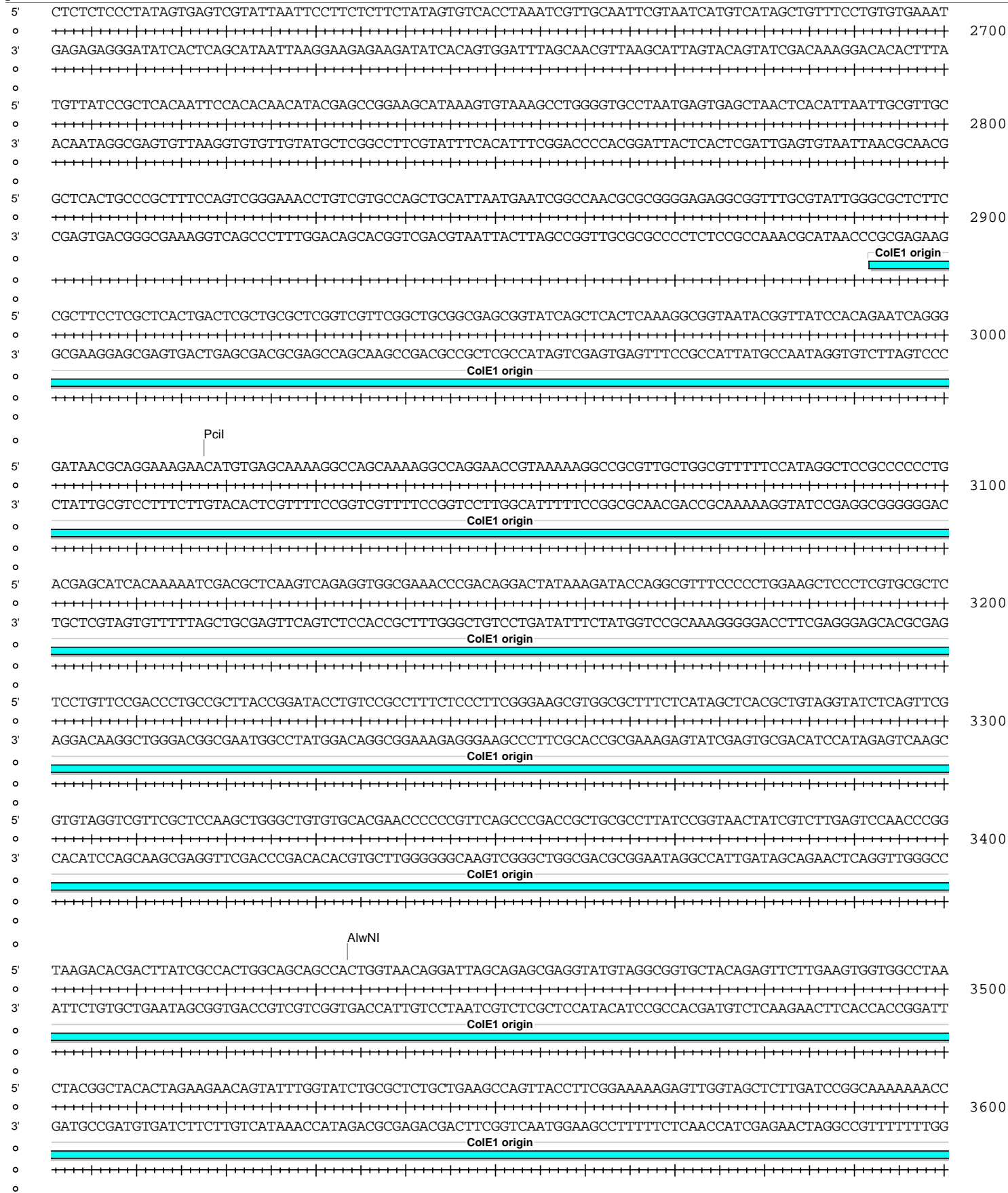
Absent Sites	0	AarI,AbstI,AfeI,AfII,AleI,Apal,AscI,AsiSI,BaeI,BaeI',BarI,BarI',BbvCI,BclI,BlpI,BmgBI,Bpu10I,BsgI,BstXI,BstZ17I,EcoICRI,Fall,Fall',FseI,FspAI,MauBI,MluI,MreI,NaeI,NgoMIV,NruI,PasI,PfIMI,PmeI,PmlI,PshAI,PspOMI,SacI,SanDI,SgrDI,SpeI,SrfI,Swal
Acc65I	1	2554 (6224)
AccI	1	5689 (6224)
AgeI	1	5857 (6224)
AhdI	1	3911 (6224)
AjuI	1	1400 (6224)
AjuI'	1	1432 (6224)
Alol	1	2313 (6224)
Alol'	1	2281 (6224)
AlwNI	1	3434 (6224)
Arsl	1	1101 (6224)
Arsl'	1	1133 (6224)
AvrII	1	5908 (6224)
BamHI	1	2289 (6224)
BglII	1	619 (6224)
BsaBI	1	5073 (6224)
BsmI	1	4986 (6224)
BsrGI	1	1790 (6224)
BssHII	1	5341 (6224)
Bsu36I	1	1668 (6224)
BtgZI	1	2539 (6224)
ClaI	1	917 (6224)
CspCI	1	2503 (6224)
CspCI'	1	2468 (6224)
DraIII	1	5232 (6224)
EcoNI	1	666 (6224)
EcoO109I	1	1102 (6224)
EcoRV	1	946 (6224)
HindIII	1	463 (6224)
HpaI	1	4972 (6224)
KpnI	1	2558 (6224)
MscI	1	5425 (6224)
NdeI	1	185 (6224)
NotI	1	407 (6224)
PacI	1	962 (6224)
PciI	1	3018 (6224)
PpuMI	1	1102 (6224)
PspXI	1	630 (6224)
Psrl	1	2151 (6224)
Psrl'	1	2119 (6224)
PstI	1	5880 (6224)
RsrII	1	5681 (6224)
SacII	1	5588 (6224)
Sall	1	5688 (6224)
SbfI	1	5880 (6224)
SfiI	1	5962 (6224)
SgrAI	1	852 (6224)
SnaBI	1	2537 (6224)
SspI	1	4715 (6224)
Tth111I	1	5757 (6224)
XcmI	1	1550 (6224)
XhoI	1	630 (6224)
XmnI	1	4510 (6224)

pMIR-REP-dCMV-HSPA1A 3' UTR (3-152) wt

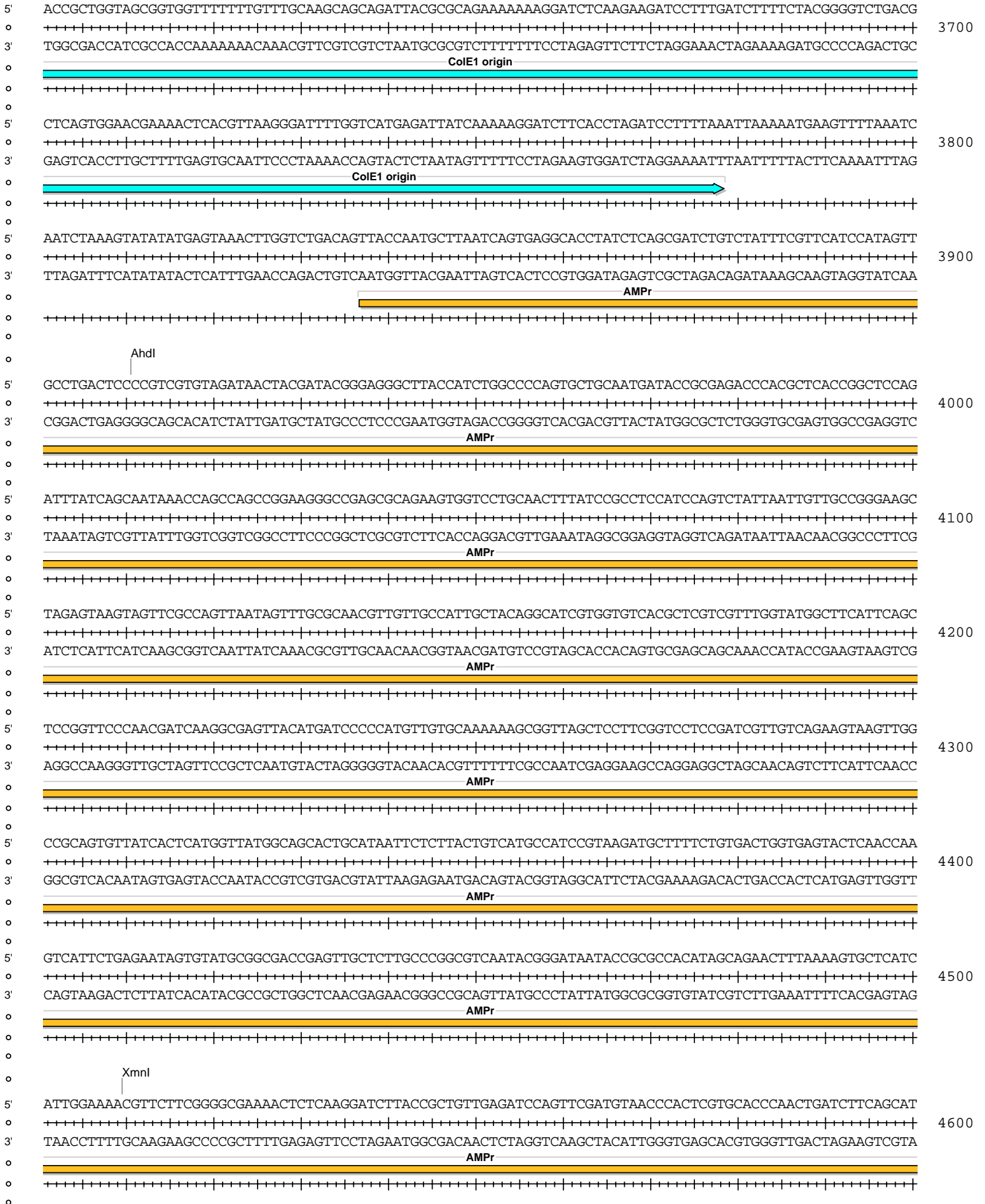








pMIR-REP-dCMV-HSPALA 3' UTR (3-152) wt



pMIR-REP-dCMV-HSPA1A 3' UTR (3-152) wt

