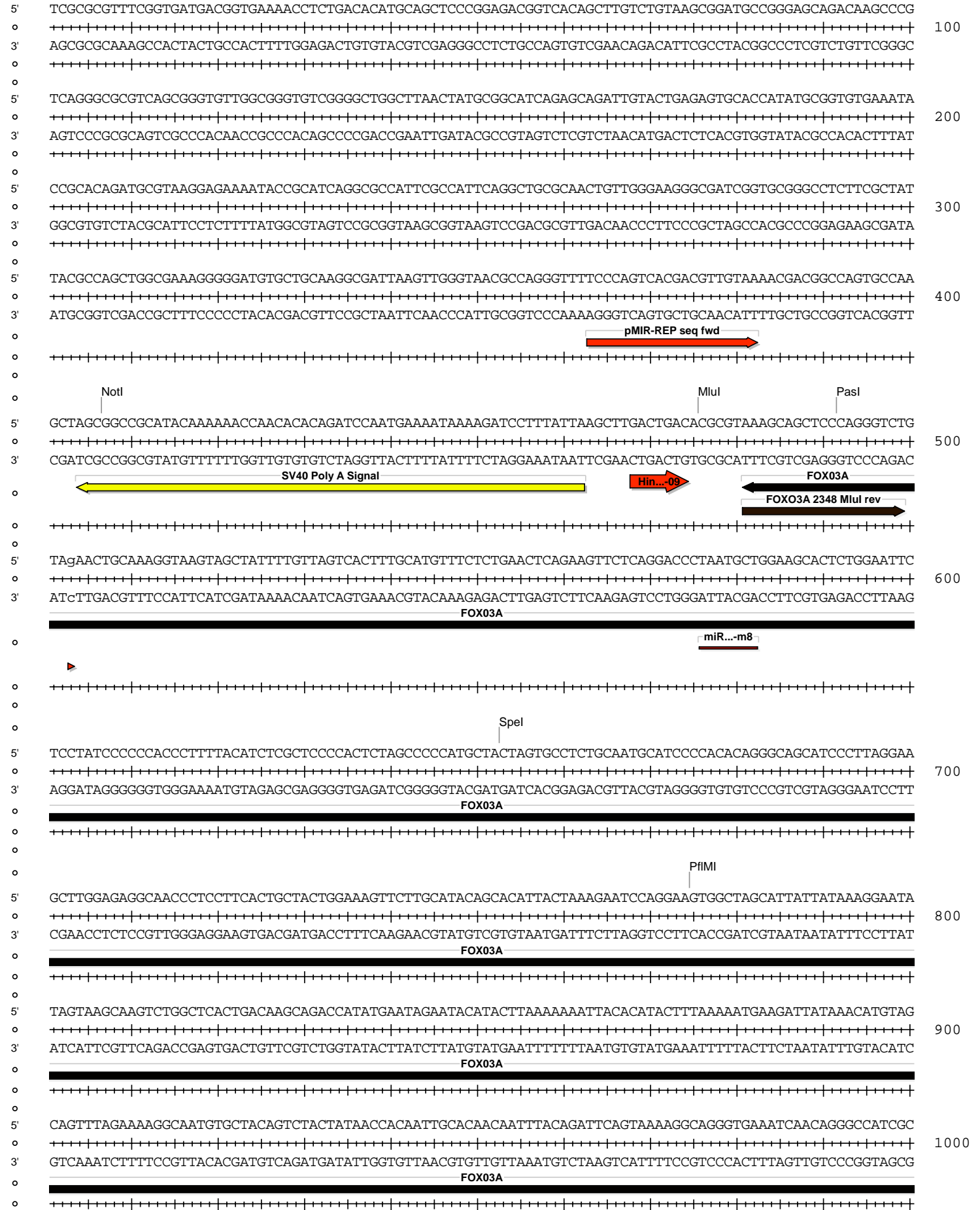
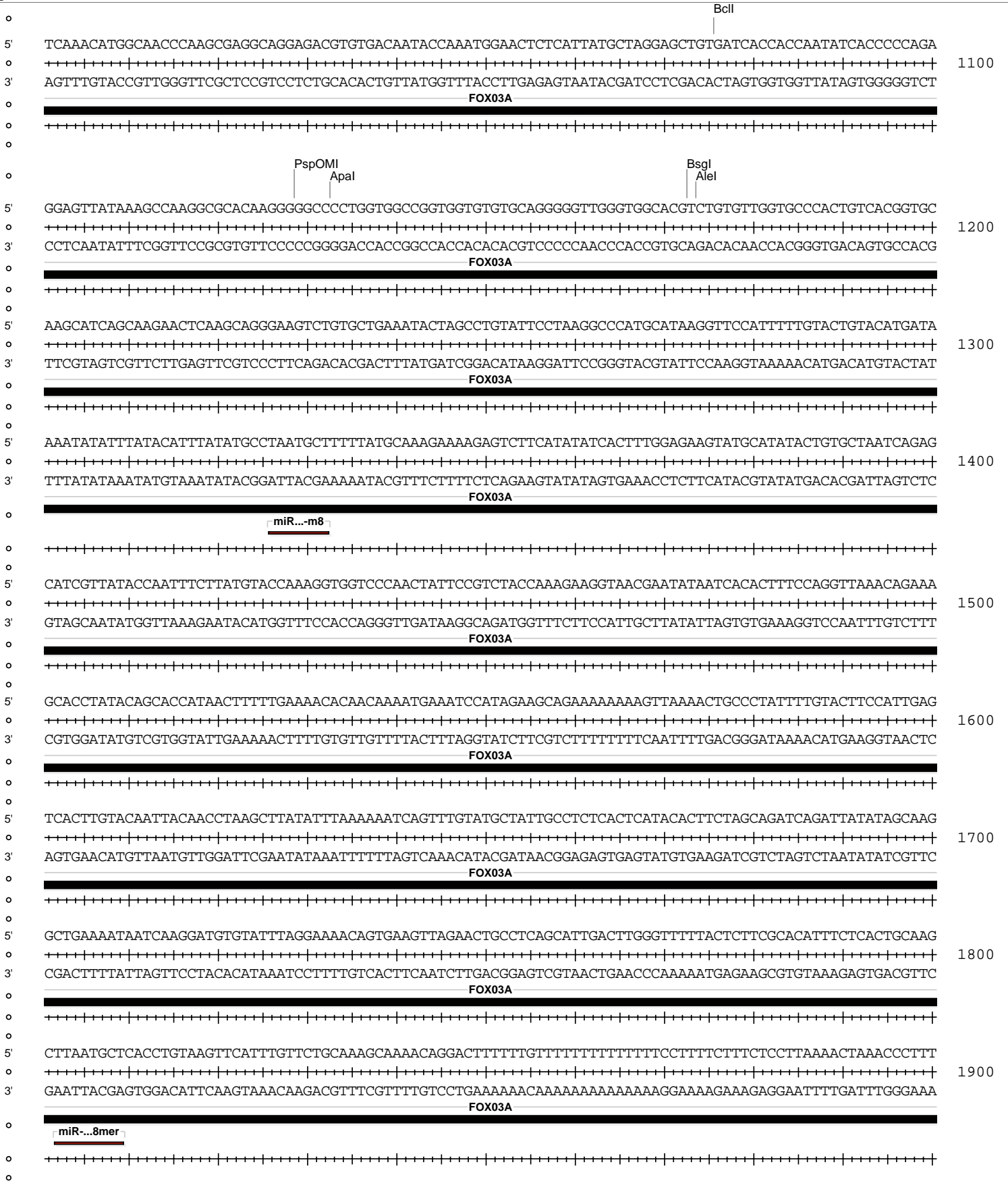
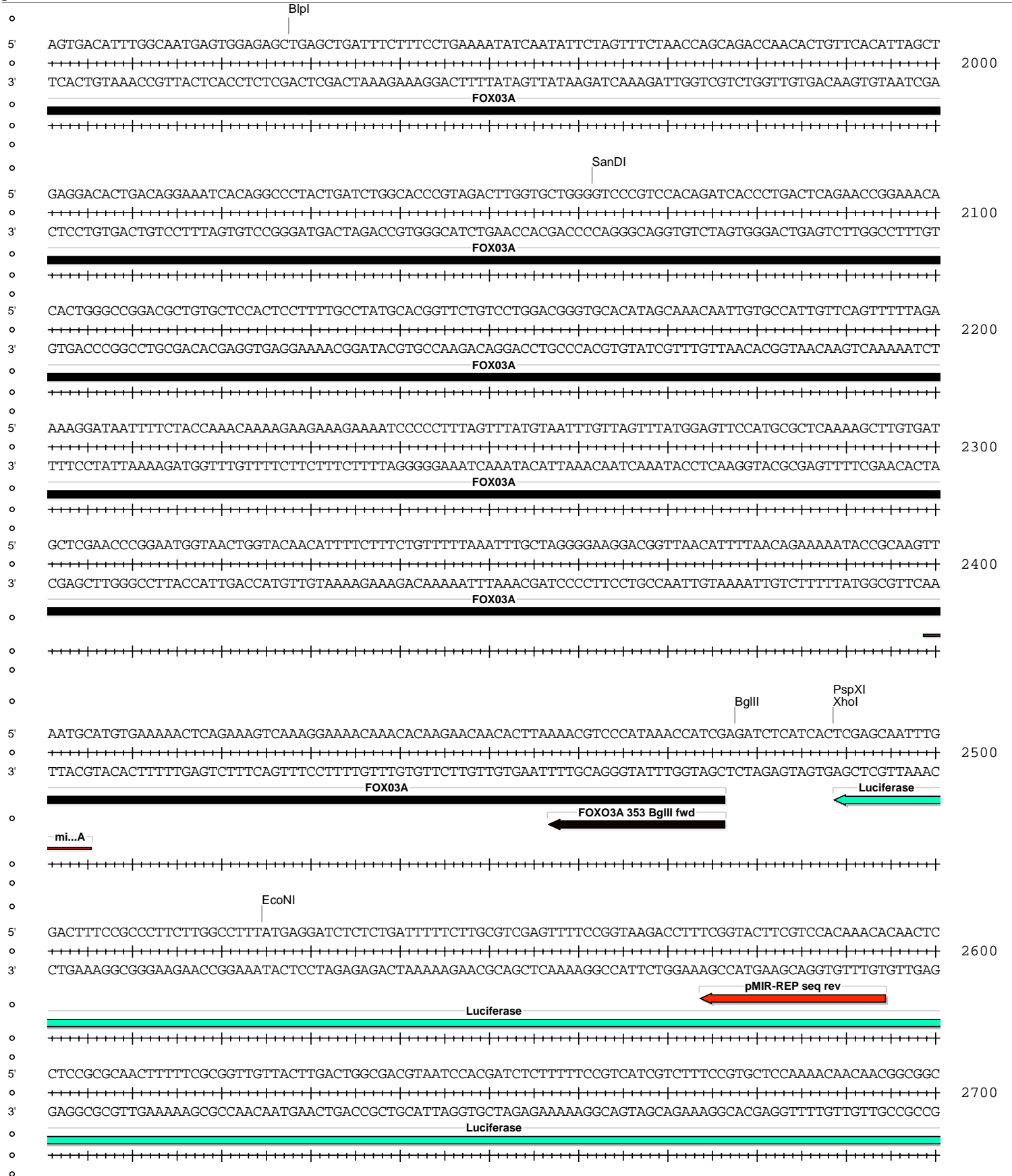


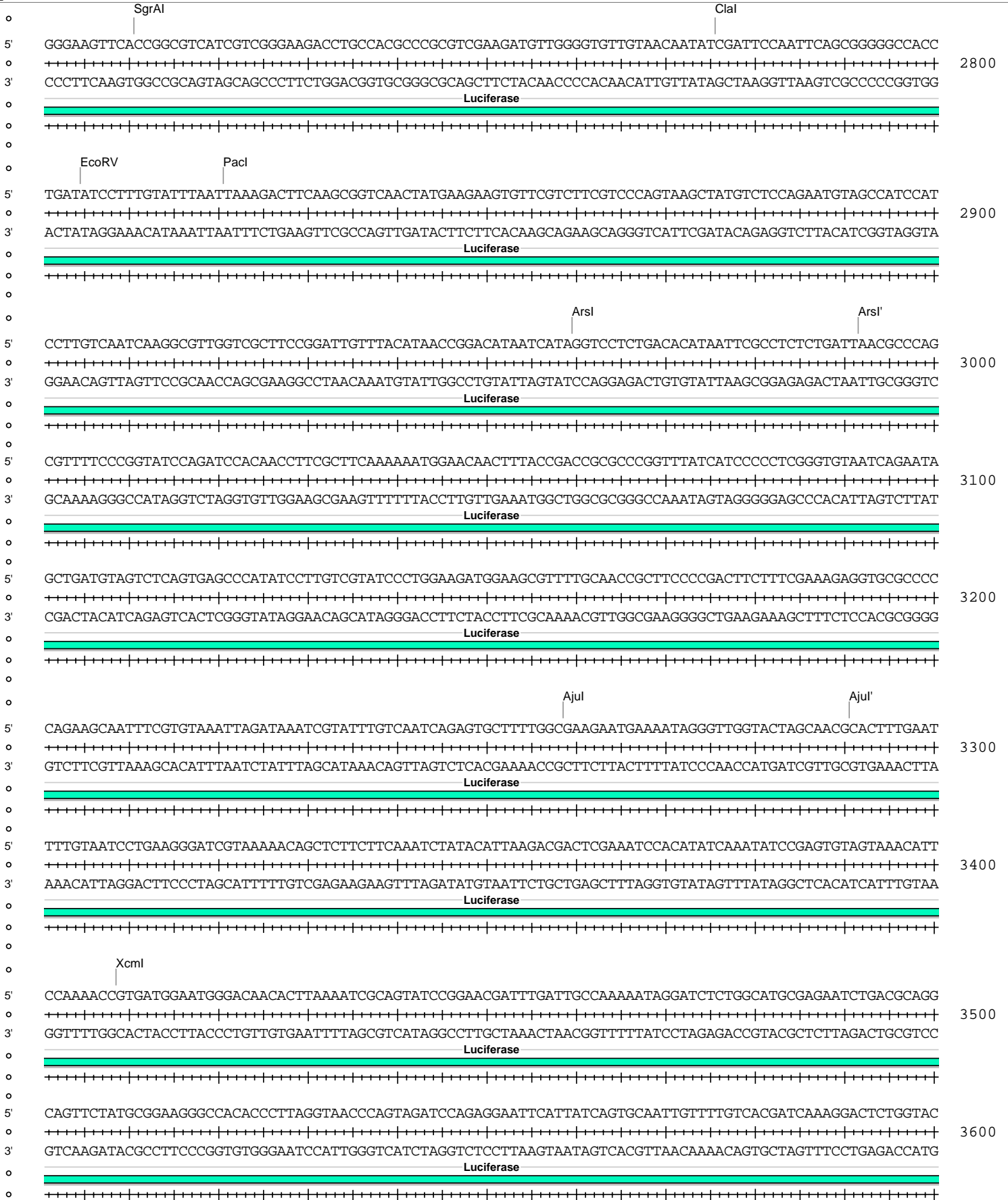
Absent Sites	0	AarI,AbstI,AfeI,AfII,Ascl,AsiSI,BaeI,BaeI',BarI,BarI',BstXI,BstZ17I,EcoICRI,Fall,Fall',FseI,FspAI,MauBI,MreI,NaeI,NgoMIV,NruI,PmeI,PmlI,PshAI,SacI,SgrDI,SrfI,Swal
Acc65I	1	4413 (8083)
AgeI	1	7716 (8083)
AhdI	1	5770 (8083)
AjuI	1	3259 (8083)
AjuI'	1	3291 (8083)
AleI	1	1174 (8083)
Alol	1	4172 (8083)
Alol'	1	4140 (8083)
ApaI	1	1133 (8083)
Arsl	1	2960 (8083)
Arsl'	1	2992 (8083)
AvrII	1	7767 (8083)
BamHI	1	4148 (8083)
BclI	1	1076 (8083)
BglII	1	2478 (8083)
BplI	1	1928 (8083)
BsaBI	1	6932 (8083)
BsgI	1	1173 (8083)
BsmI	1	6845 (8083)
BssHII	1	7200 (8083)
ClaI	1	2776 (8083)
DraIII	1	7091 (8083)
EcoNI	1	2525 (8083)
EcoRV	1	2805 (8083)
KpnI	1	4417 (8083)
MluI	1	476 (8083)
MscI	1	7284 (8083)
NotI	1	407 (8083)
PacI	1	2821 (8083)
PasI	1	492 (8083)
PfIMI	1	775 (8083)
PspOMI	1	1129 (8083)
PspXI	1	2489 (8083)
PsrI	1	4010 (8083)
PsrI'	1	3978 (8083)
PstI	1	7739 (8083)
RsrII	1	7540 (8083)
SacII	1	7447 (8083)
Sall	1	7547 (8083)
SanDI	1	2062 (8083)
SbfI	1	7739 (8083)
Scal	1	6250 (8083)
SfiI	1	7821 (8083)
SgrAI	1	2711 (8083)
SnaBI	1	4396 (8083)
SpeI	1	653 (8083)
Tth111I	1	7616 (8083)
XcmI	1	3409 (8083)
XhoI	1	2489 (8083)
XmnI	1	6369 (8083)

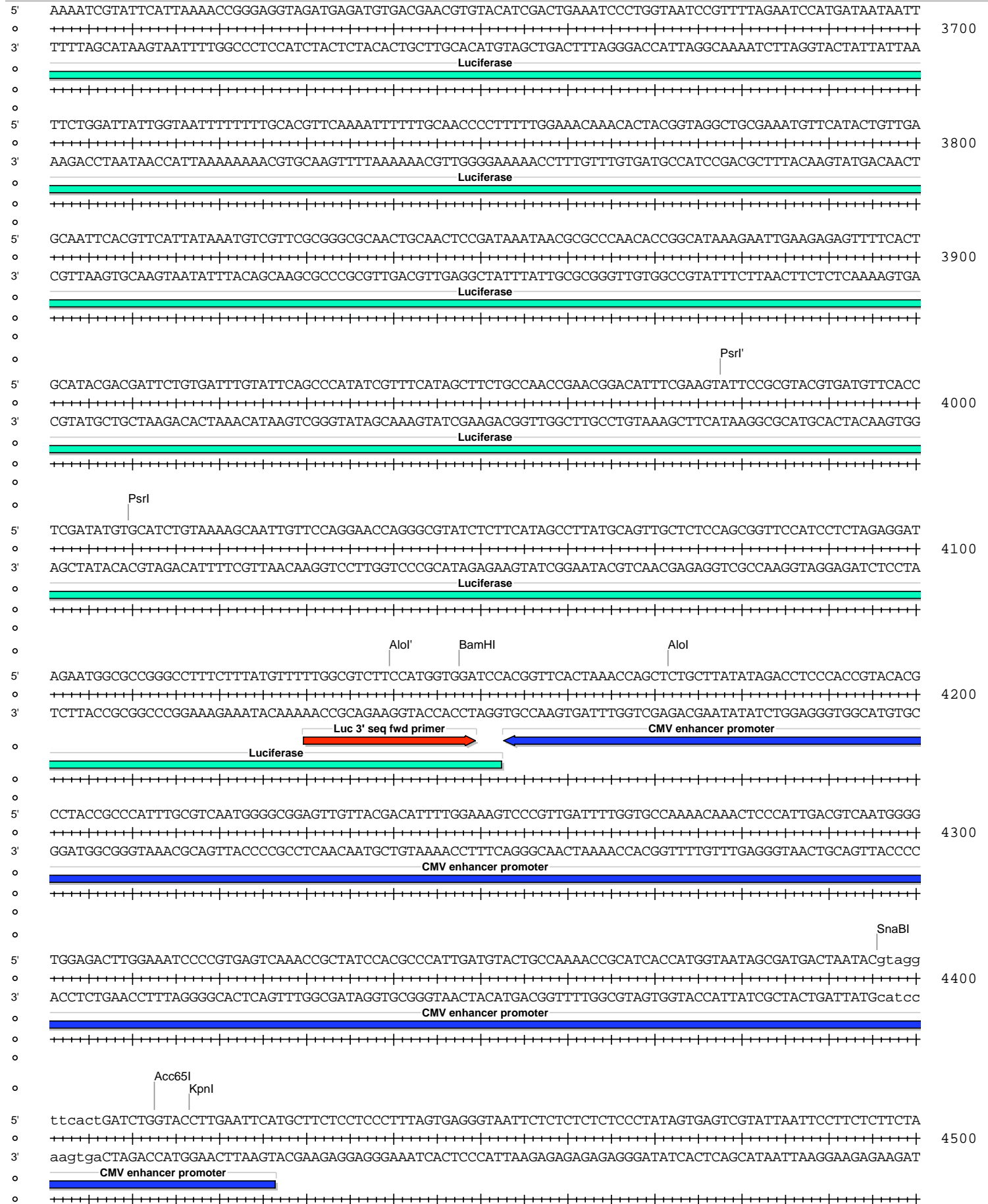
pMIR-REP-dCMV FOX03A 353-2348











5' TAGTGTACCTAAATCGTTGCAATTCGTAATCATGTGCATAGCTGTTTCCCTGTGTGAAATTGTTATCCGCTCACAATTCCACACAACATACGAGCCGGAAG
o ++++++
3' ATCACAGTGGATTTAGCAACGTTAAGCATTAGTACAGTATCGACAAAGGACACACTTTAACAATAGGCGAGTGTAAAGGTGTGTTGATGCTCGGCCTTC
o ++++++ 4600

5' CATAAAGTGTAAAGCCTGGGGTGCTTAATGAGTGAGCTAACTCACATTAATTGCGTTGCGCTCACTGCCCGCTTTCAGTCGGGAAACCTGTCGTGCCAG
o ++++++
3' GTATTTACATTTTCGACCCACGGATTACTCACTCGATTGAGTGAATTAACGCAACGCGAGTGACGGGCGAAAGGTCAGCCCTTTGGACAGCACGGTC
o ++++++ 4700

5' CTGCATTAATGAATCGGCCAACGCGCGGGGAGAGGCGGTTTGCATTTGGGCGCTCTTCCGTTTCTCGCTCACTGACTCGCTGCGCTCGGTGTTTCGGC
o ++++++
3' GACGTAATTACTTAGCCGGTTGCGCGCCCTCTCCGCCAAACGCATAACCCGCGAGAAGGCGAAGGAGCGAGTGACTGAGCGACGCGAGCCAGCAAGCCG
o ++++++
o ++++++ ColE1 origin
o ++++++

5' TGCGGCGAGCGGTATCAGCTCACTCAAAGGCGTAATACGTTATCCACAGAATCAGGGGATAACGCAGGAAAGAACATGTGAGCAAAGGCCAGCAAAA
o ++++++
3' ACGCCGCTCGCCATAGTCGAGTGAGTTTCCGCCATTATGCCAATAGGTGTCTTAGTCCCCTATTGCGTCCTTTCTTGTACACTCGTTTTCCGGTCGTTTT
o ++++++
o ++++++ ColE1 origin
o ++++++

5' GGCCAGGAACCGTAAAGGCGCGTGGCGTTTTTCCATAGGCTCCGCCCCCTGACGAGCATCAAAAAATCGACGCTCAAGTCAGAGGTGGCGA
o ++++++
3' CCGGTCCTTGGCATTTTTCCGGCGCAACGACCGCAAAAAGGTATCCGAGGCGGGGGACTGCTCGTAGTGTTTTTCAGCTGCGAGTTCAGTCTCCACCGCT
o ++++++
o ++++++ ColE1 origin
o ++++++

5' AACCCGACAGGACTATAAAGATACCAGGCGTTTCCCCTGGAAGCTCCCCTCGTGCGCTCTCCTGTTCCGACCCCTGCCGCTTACCCGATACCTGTCCGCCT
o ++++++
3' TTGGGCTGCTCTGATATTTCTATGGTCCGCAAAGGGGACCTTCGAGGGAGCACGCGAGAGGACAAGGCTGGGACGGCGAATGGCTATGGACAGGCGGA
o ++++++
o ++++++ ColE1 origin
o ++++++

5' TTCTCCCTTCGGGAAGCGTGGCGTTTTCTCATAGCTCACGCTGTAGGTATCTCAGTTCGGTGTAGGTGTTCCGCTCCAAGCTGGGCTGTGTGCACGAACC
o ++++++
3' AAGAGGGAAGCCCTTCGCACCGCGAAAGAGTATCGAGTGGACATCCATAGAGTCAAGCCACATCCAGCAAGCGAGGTTGACCCGACACAGTGTCTGG
o ++++++
o ++++++ ColE1 origin
o ++++++

5' CCCCCTCAGCCGACCGCTGCGCTTATCCGGTAACTATCGTCTTGTAGTCCAACCCGGTAAGACACGACTTATCGCCACTGGCAGCAGCCACTGGTAAC
o ++++++
3' GGGCAAGTTCGGCTGGCGACCGGAATAGCCATTGATAGCAGAACTCAGGTTGGGCCATTCTGTGCTGAATAGCGGTGACCGTCTGTCGTTGACCATTG
o ++++++
o ++++++ ColE1 origin
o ++++++

5' AGGATTAGCAGAGCGAGGTATGTAGGCGGTGCTACAGAGTTCCTGAAGTGGTGGCCTAACTACGGCTACACTAGAAGAACAGTATTTGGTATCTGCGCTC
o ++++++
3' TCCTAATCGTCTCGTCCATACATCCGCCACGATGTCTCAAGAACTTCACCACCGGATTGATGCCGATGTGATCTTCTTGCATAAACCATAGACGCGAG
o ++++++
o ++++++ ColE1 origin
o ++++++

5' TGCTGAAGCCAGTTACCTTCGGAAAAAGAGTTGGTAGCTCTTGATCCGGCAAAAAACCACCCTGGTAGCGGTGGTTTTTTTGTGTTGCAAGCAGCAGAT
o ++++++
3' ACGACTTCGGTCAATGGAAGCCTTTTCTCAACCATCGAGAACTAGGCCGTTTTTTTGGTGGCGACCATCGCCACCAAAAAAACAAACGTTTCGTGCTCTA
o ++++++
o ++++++ ColE1 origin
o ++++++

5' TACGCGCAGAAAAAAGGATCTCAAGAAGATCCTTTGATCTTTTCTACGGGTCTGACGCTCAGTGGAACGAAAACCTACGTTAAGGGATTTTGGTCATG
o ++++++
3' ATGCGCGTCTTTTTTCTAGAGTCTTCTAGGAACTAGAAAAGATGCCCCAGACTGCGAGTCACCTTGCTTTTGTAGTGAATTCCTAAAACAGTAC
o ++++++
o ++++++ ColE1 origin
o ++++++

