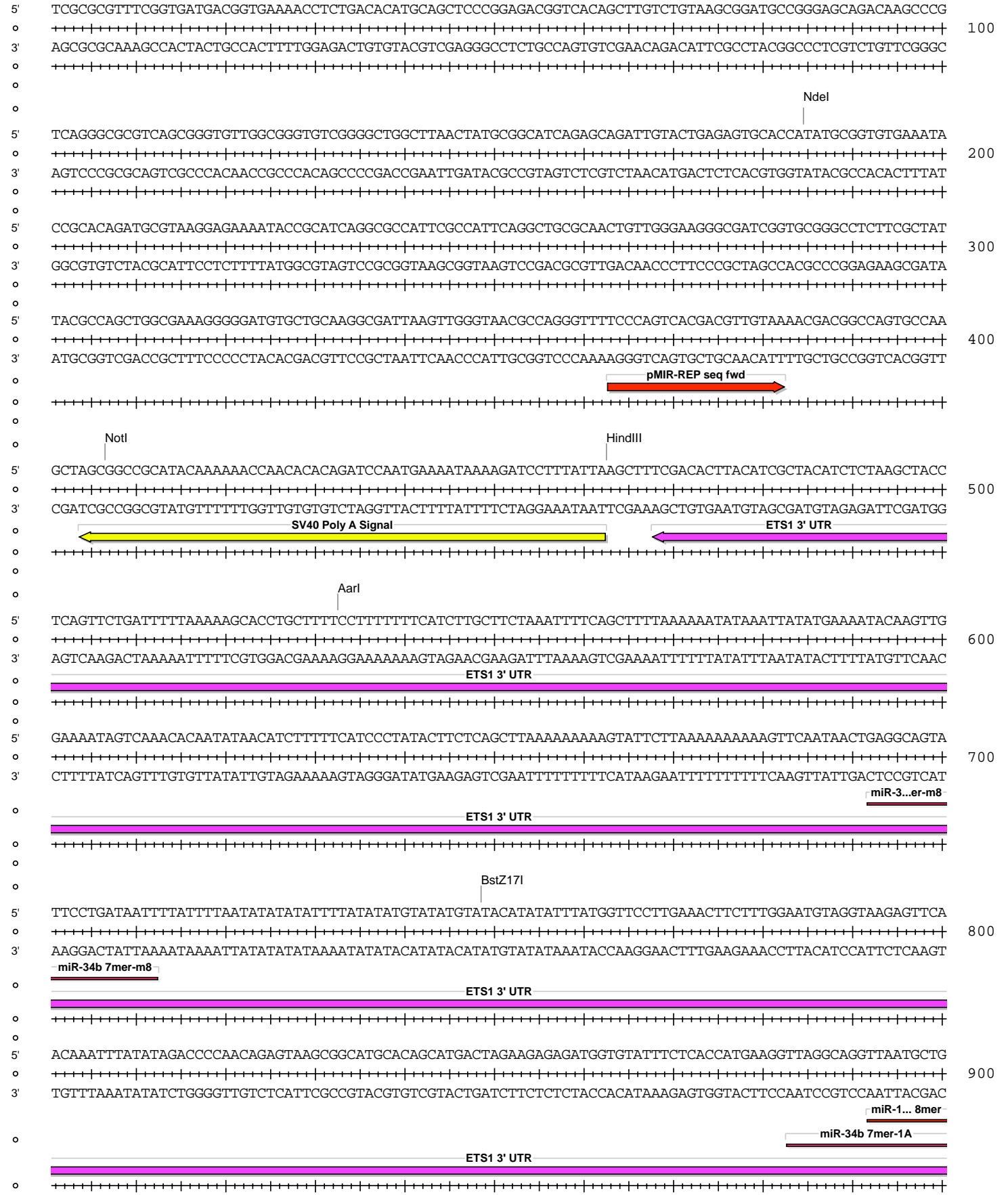
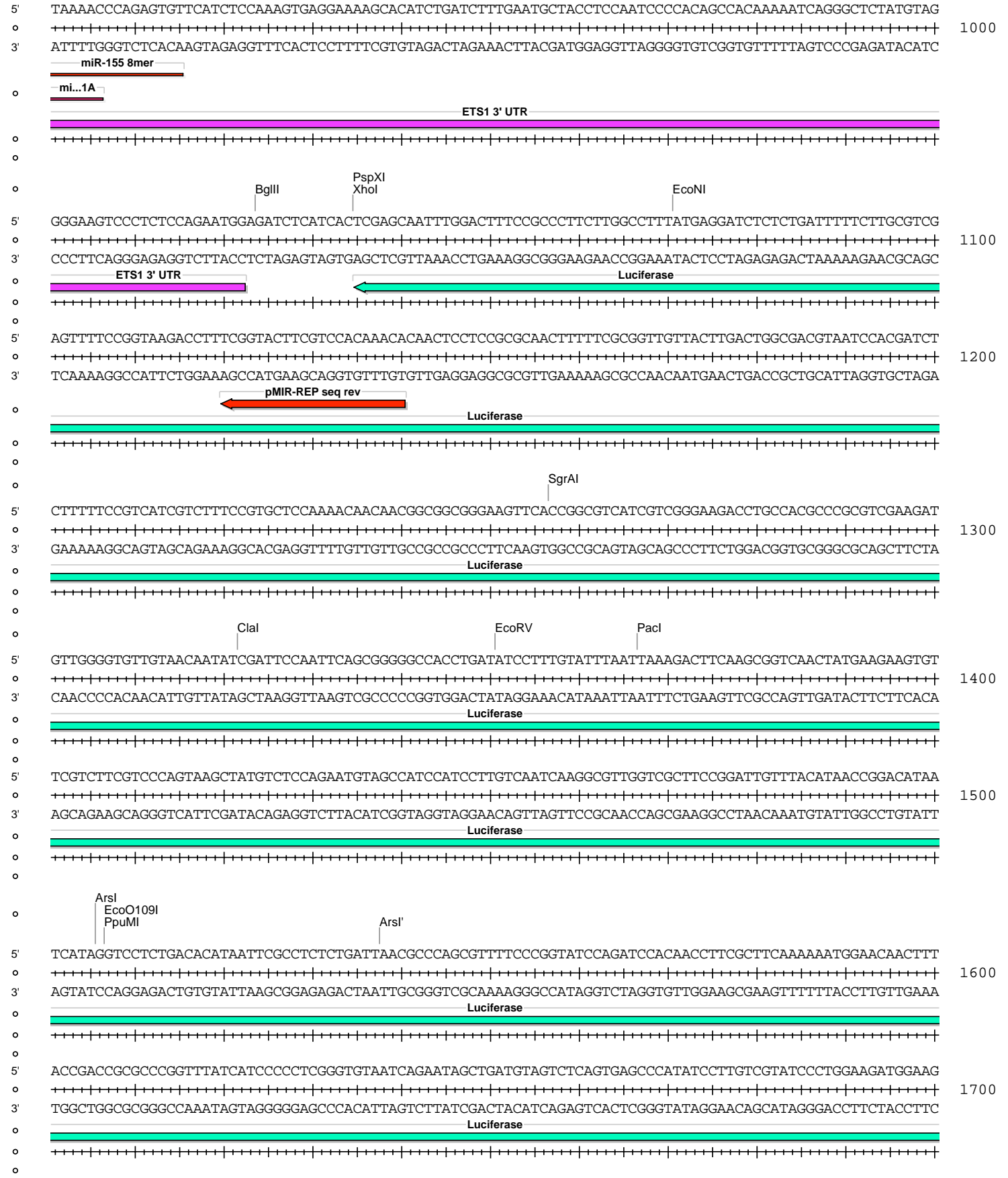


Absent Sites	0	AbsI,AfeI,AfII,AleI,Apal,AscI,AsiSI,BaeI,BaeI',BarI,BarI',BbvCI,BclI,BlpI,BmgBI,Bpu10I,BsgI,BstXI,EcoICRI,Fall,Fall',FseI,FspAI,MauBI,MluI,MreI,NaeI,NgoMIV,NruI,PasI,PfIMi,PmeI,PmlI,PshAI,PspOMI,SacI,SanDI,SgrDI,SpeI,SrfI,Swal
AarI	1	533 (6629)
Acc65I	1	2959 (6629)
AgeI	1	6262 (6629)
AhdI	1	4316 (6629)
AjuI	1	1805 (6629)
AjuI'	1	1837 (6629)
Alol	1	2718 (6629)
Alol'	1	2686 (6629)
AlwNI	1	3839 (6629)
Arsl	1	1506 (6629)
Arsl'	1	1538 (6629)
AvrII	1	6313 (6629)
BamHI	1	2694 (6629)
BglII	1	1024 (6629)
BsaBI	1	5478 (6629)
BsrGI	1	2195 (6629)
BssHII	1	5746 (6629)
BstZ17I	1	749 (6629)
Bsu36I	1	2073 (6629)
Clal	1	1322 (6629)
CspCI	1	2908 (6629)
CspCI'	1	2873 (6629)
DraIII	1	5637 (6629)
EcoNI	1	1071 (6629)
EcoO109I	1	1507 (6629)
EcoRV	1	1351 (6629)
HindIII	1	463 (6629)
HpaI	1	5377 (6629)
KpnI	1	2963 (6629)
MscI	1	5830 (6629)
NdeI	1	185 (6629)
NotI	1	407 (6629)
PacI	1	1367 (6629)
PciI	1	3423 (6629)
PpuMI	1	1507 (6629)
PspXI	1	1035 (6629)
Psrl	1	2556 (6629)
Psrl'	1	2524 (6629)
PstI	1	6285 (6629)
RsrII	1	6086 (6629)
SacII	1	5993 (6629)
Sall	1	6093 (6629)
SbfI	1	6285 (6629)
Scal	1	4796 (6629)
SfiI	1	6367 (6629)
SgrAI	1	1257 (6629)
SnaBI	1	2942 (6629)
SspI	1	5120 (6629)
Tth111I	1	6162 (6629)
XcmI	1	1955 (6629)
XhoI	1	1035 (6629)
XmnI	1	4915 (6629)

pMIR-REP-dCMV-ETS1 3' UTR (2869-3423) wt

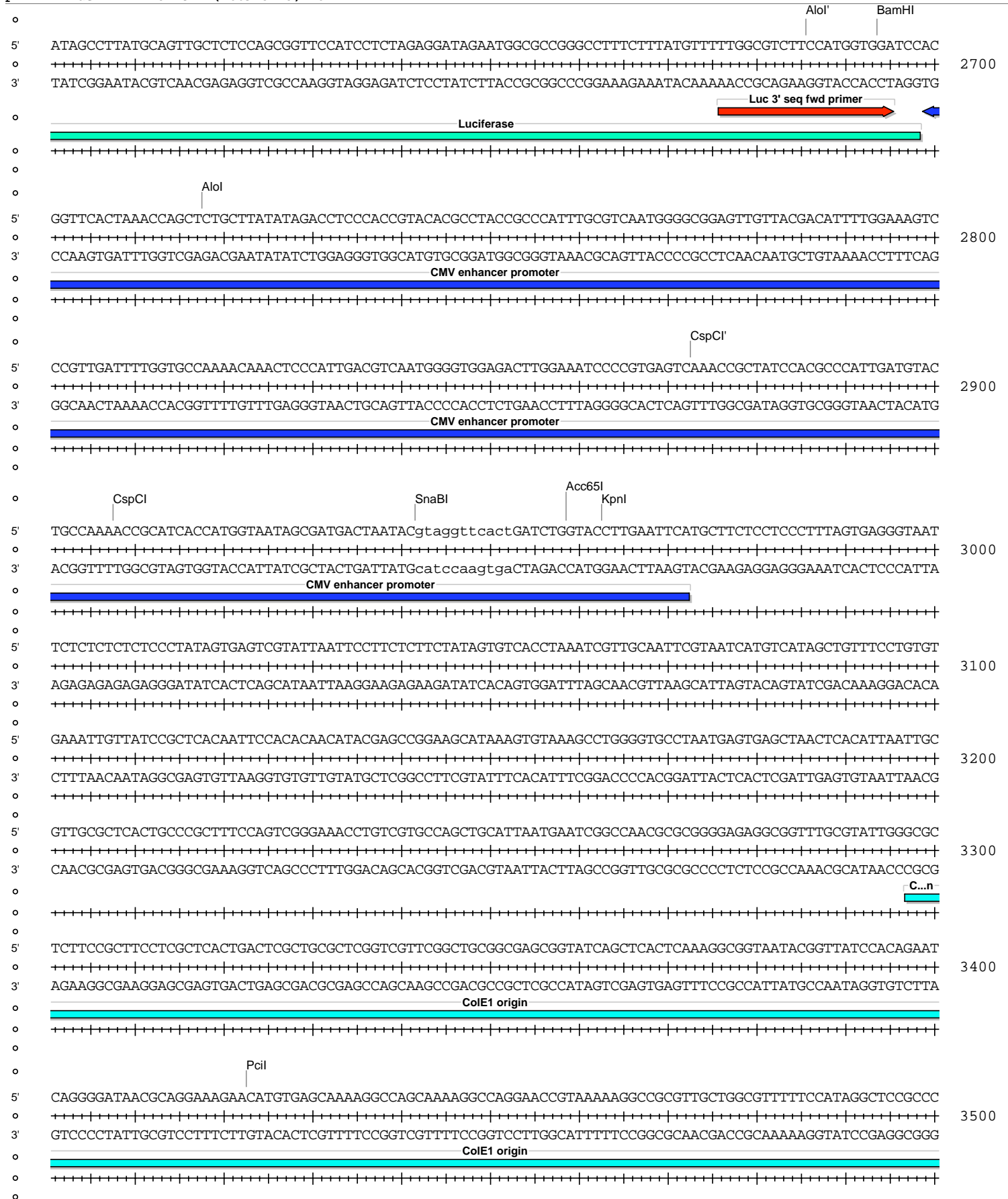


pMIR-REP-dCMV-ETS1 3' UTR (2869-3423) wt

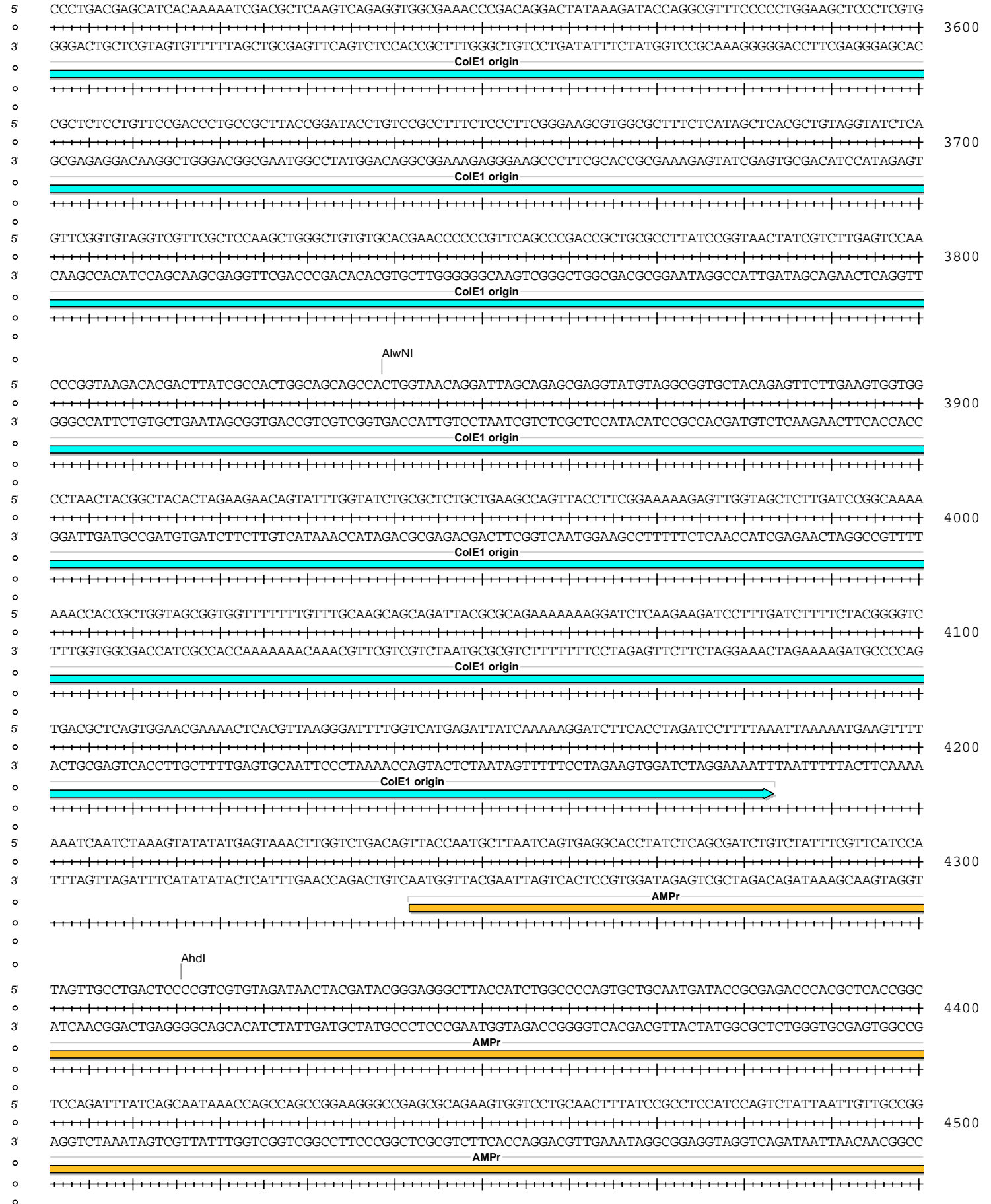


pMIR-REP-dCMV-ETS1 3' UTR (2869-3423) wt

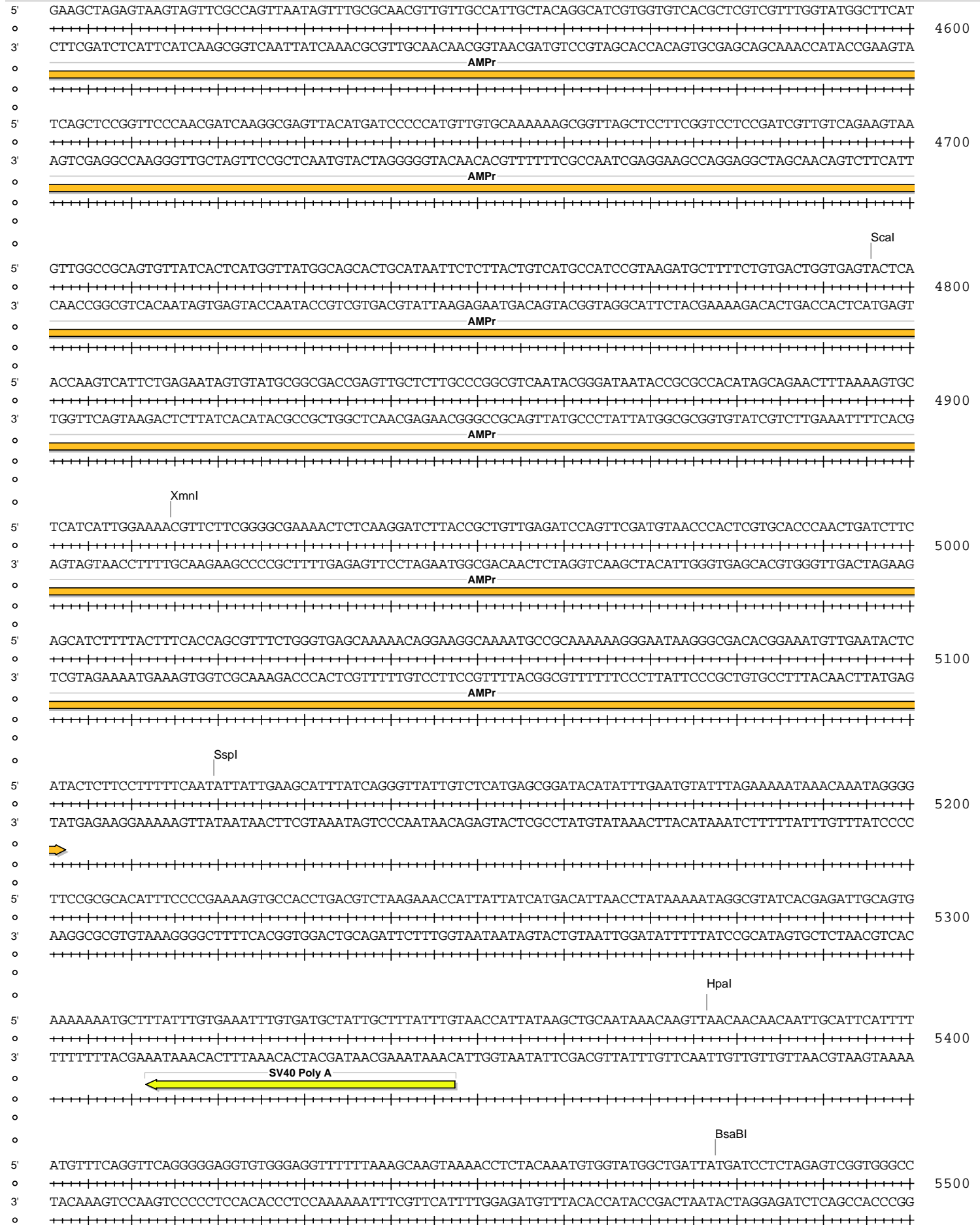




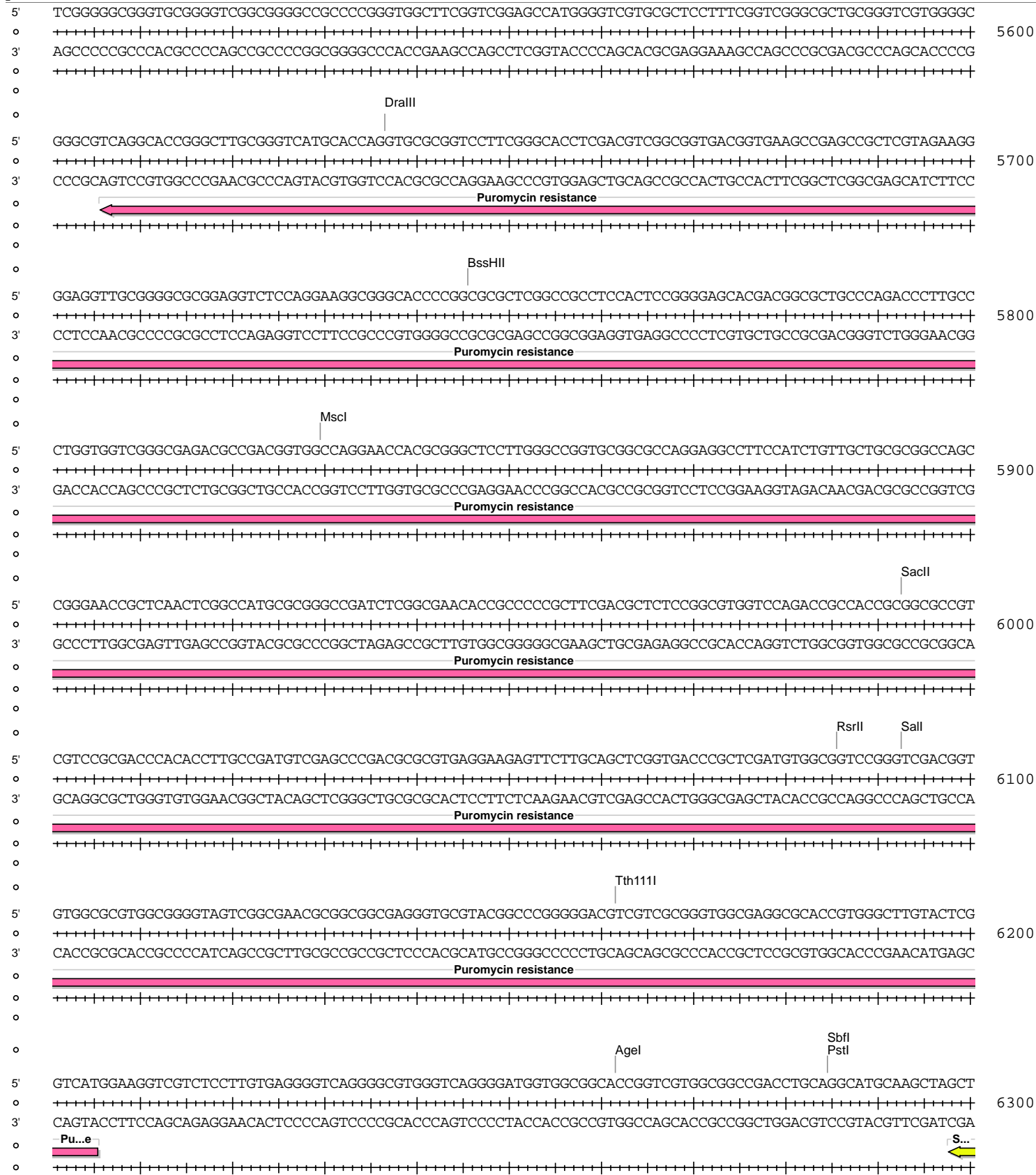
pMIR-REP-dCMV-ETS1 3' UTR (2869-3423) wt



pMIR-REP-dCMV-ETS1 3' UTR (2869-3423) wt



pMIR-REP-dCMV-ETS1 3' UTR (2869-3423) wt



pMIR-REP-dCMV-ETS1 3' UTR (2869-3423) wt

