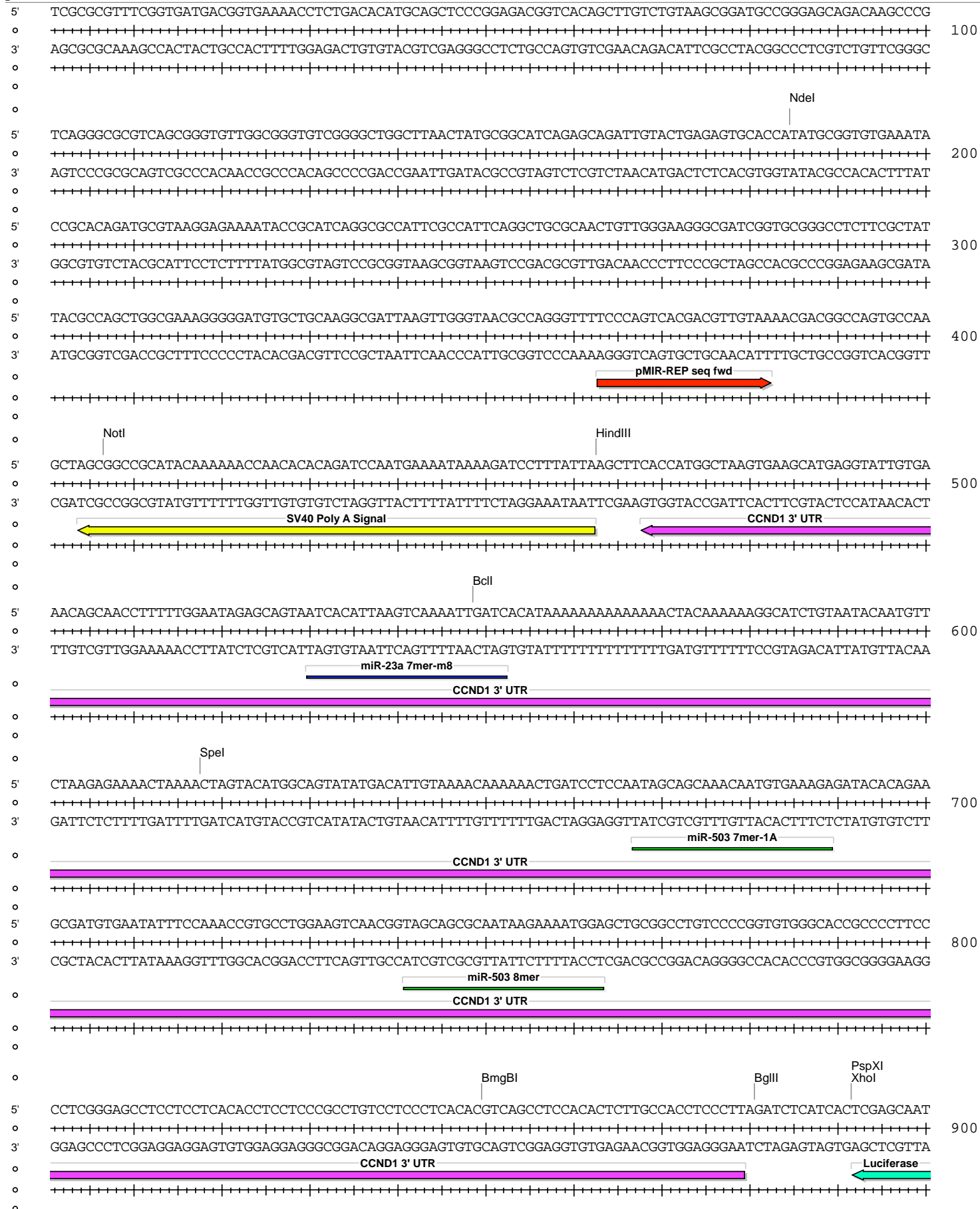
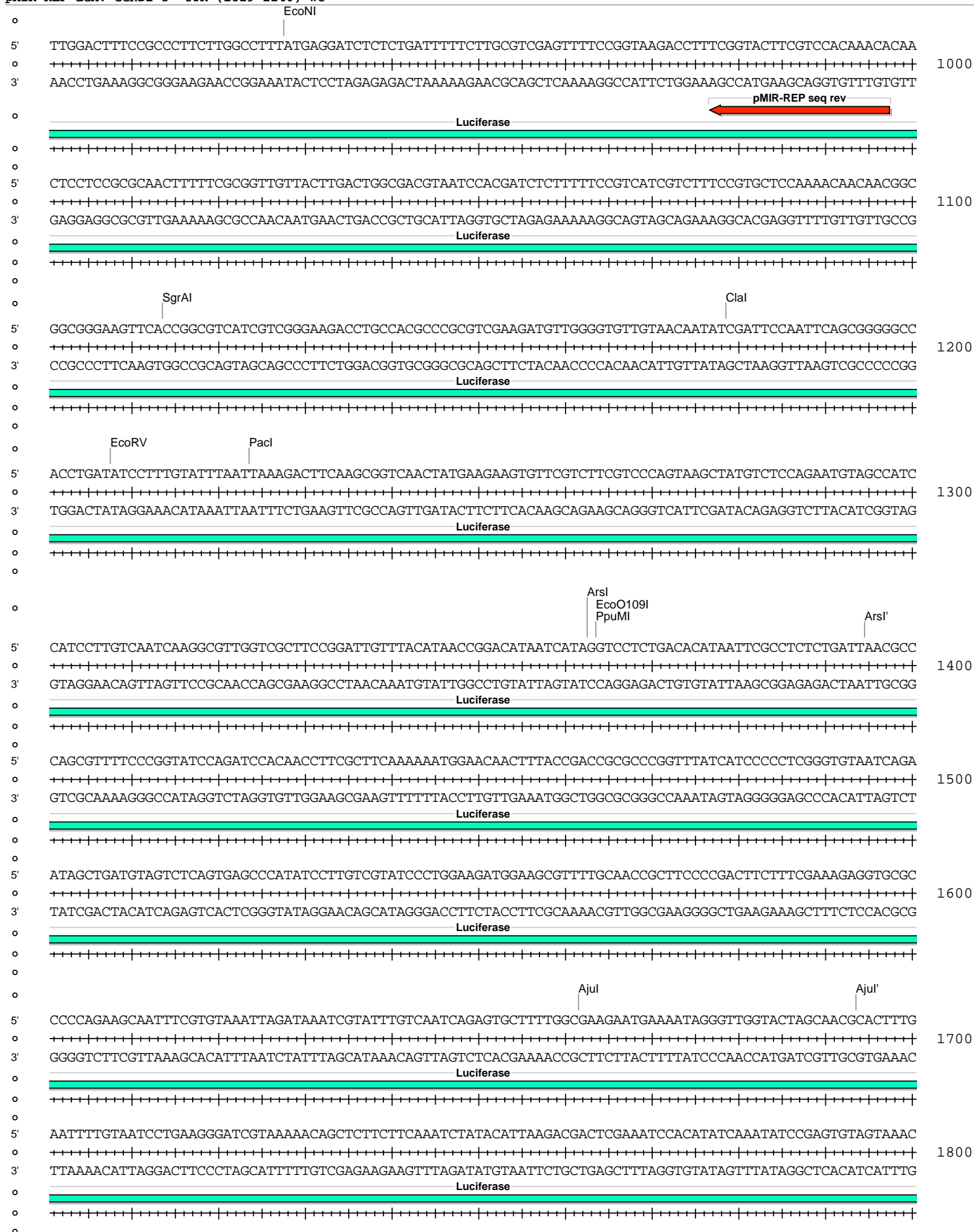


pMIR-REP-dCMV-CCND1 3' UTR (1829-2240) wt

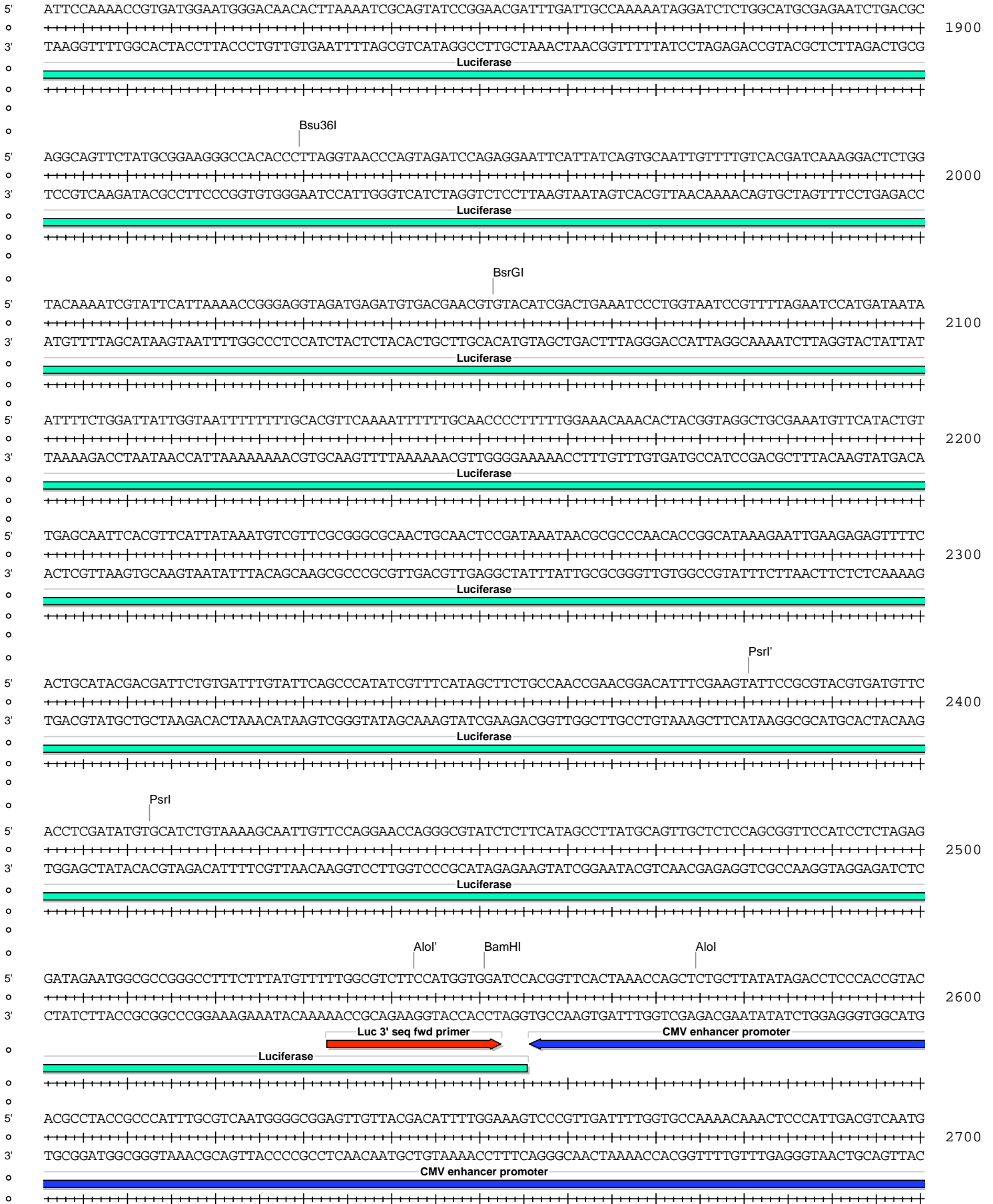
| Absent Sites | 0 | AarI,AbstI,AfeI,AfII,AleI,Apal,Ascl,AsiSI,BaeI,BaeI',BarI,BarI',BbvCI,BIpl,Bpu10I,BsgI,BstXI,BstZ17I,EcoICRI,Fall,Fall',FseI,FspAI,MauBI,MluI,MreI,NaeI,NgoMIV,NruI,PasI,PfIMI,PmeI,PmII,PshAI,PspOMI,SacI,SanDI,SgrDI,SrfI,Swal |
|--------------|---|--|
| Acc65I | 1 | 2816 (6486) |
| AccI | 1 | 5951 (6486) |
| AgeI | 1 | 6119 (6486) |
| AhdI | 1 | 4173 (6486) |
| AjuI | 1 | 1662 (6486) |
| AjuI' | 1 | 1694 (6486) |
| Alol | 1 | 2575 (6486) |
| Alol' | 1 | 2543 (6486) |
| AlwNI | 1 | 3696 (6486) |
| Arsl | 1 | 1363 (6486) |
| Arsl' | 1 | 1395 (6486) |
| AvrII | 1 | 6170 (6486) |
| BamHI | 1 | 2551 (6486) |
| BclI | 1 | 549 (6486) |
| BglII | 1 | 881 (6486) |
| BmgBI | 1 | 850 (6486) |
| BsaBI | 1 | 5335 (6486) |
| BsmI | 1 | 5248 (6486) |
| BsrGI | 1 | 2052 (6486) |
| BssHII | 1 | 5603 (6486) |
| Bsu36I | 1 | 1930 (6486) |
| Clal | 1 | 1179 (6486) |
| CspCI | 1 | 2765 (6486) |
| CspCI' | 1 | 2730 (6486) |
| DraIII | 1 | 5494 (6486) |
| EcoNI | 1 | 928 (6486) |
| EcoO109I | 1 | 1364 (6486) |
| EcoRV | 1 | 1208 (6486) |
| HindIII | 1 | 463 (6486) |
| HpaI | 1 | 5234 (6486) |
| KpnI | 1 | 2820 (6486) |
| MscI | 1 | 5687 (6486) |
| NdeI | 1 | 185 (6486) |
| NotI | 1 | 407 (6486) |
| Pacl | 1 | 1224 (6486) |
| PciI | 1 | 3280 (6486) |
| PpuMI | 1 | 1364 (6486) |
| PspXI | 1 | 892 (6486) |
| Psrl | 1 | 2413 (6486) |
| Psrl' | 1 | 2381 (6486) |
| PstI | 1 | 6142 (6486) |
| RsrII | 1 | 5943 (6486) |
| SacII | 1 | 5850 (6486) |
| Sall | 1 | 5950 (6486) |
| SbfI | 1 | 6142 (6486) |
| Scal | 1 | 4653 (6486) |
| SfiI | 1 | 6224 (6486) |
| SgrAI | 1 | 1114 (6486) |
| SnaBI | 1 | 2799 (6486) |
| SpeI | 1 | 618 (6486) |
| Tth111I | 1 | 6019 (6486) |
| XhoI | 1 | 892 (6486) |
| Xmnl | 1 | 4772 (6486) |

pMIR-REP-dCMV-CCND1 3' UTR (1829-2240) wt

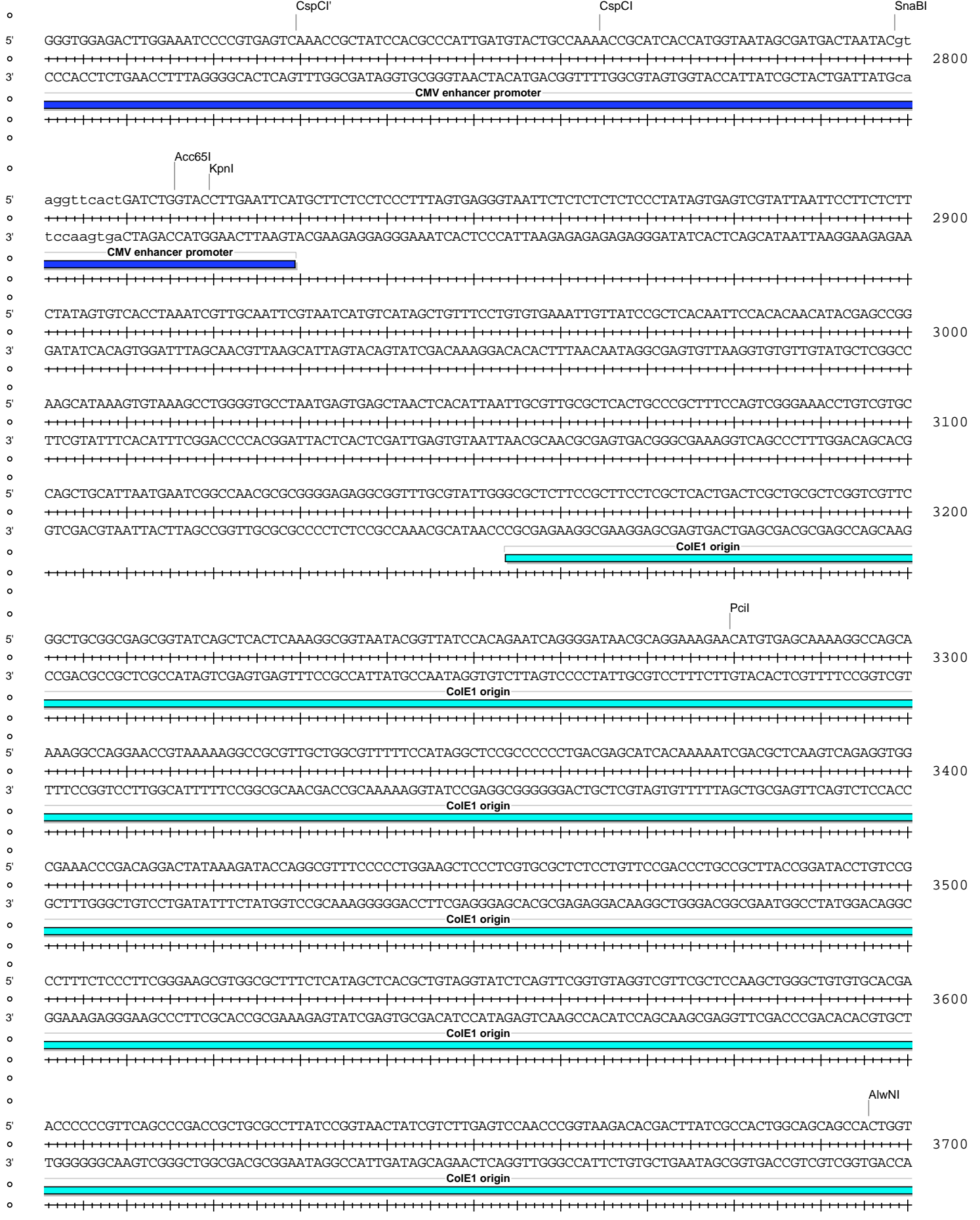




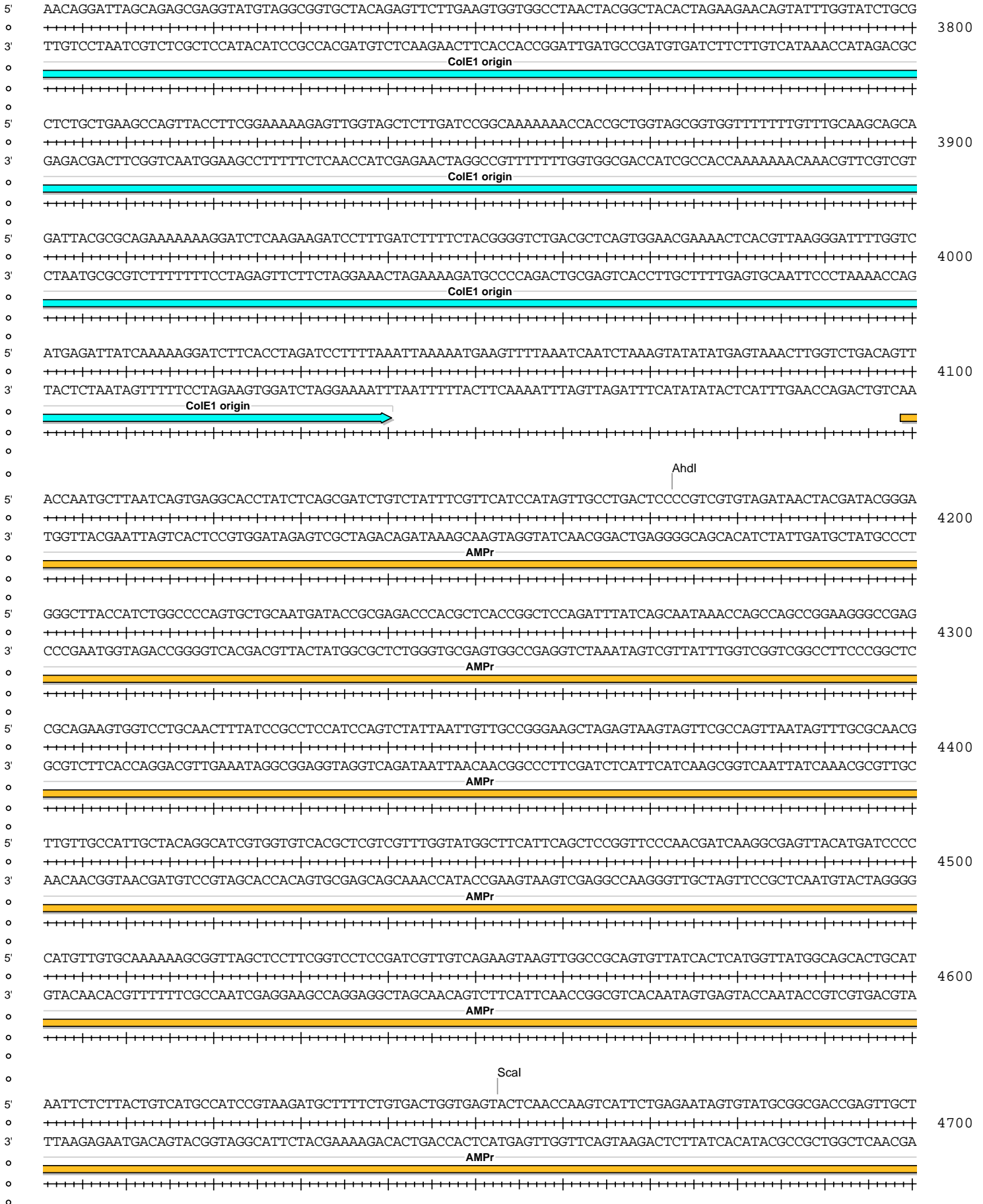
pMIR-REP-dCMV-CCND1 3' UTR (1829-2240) wt

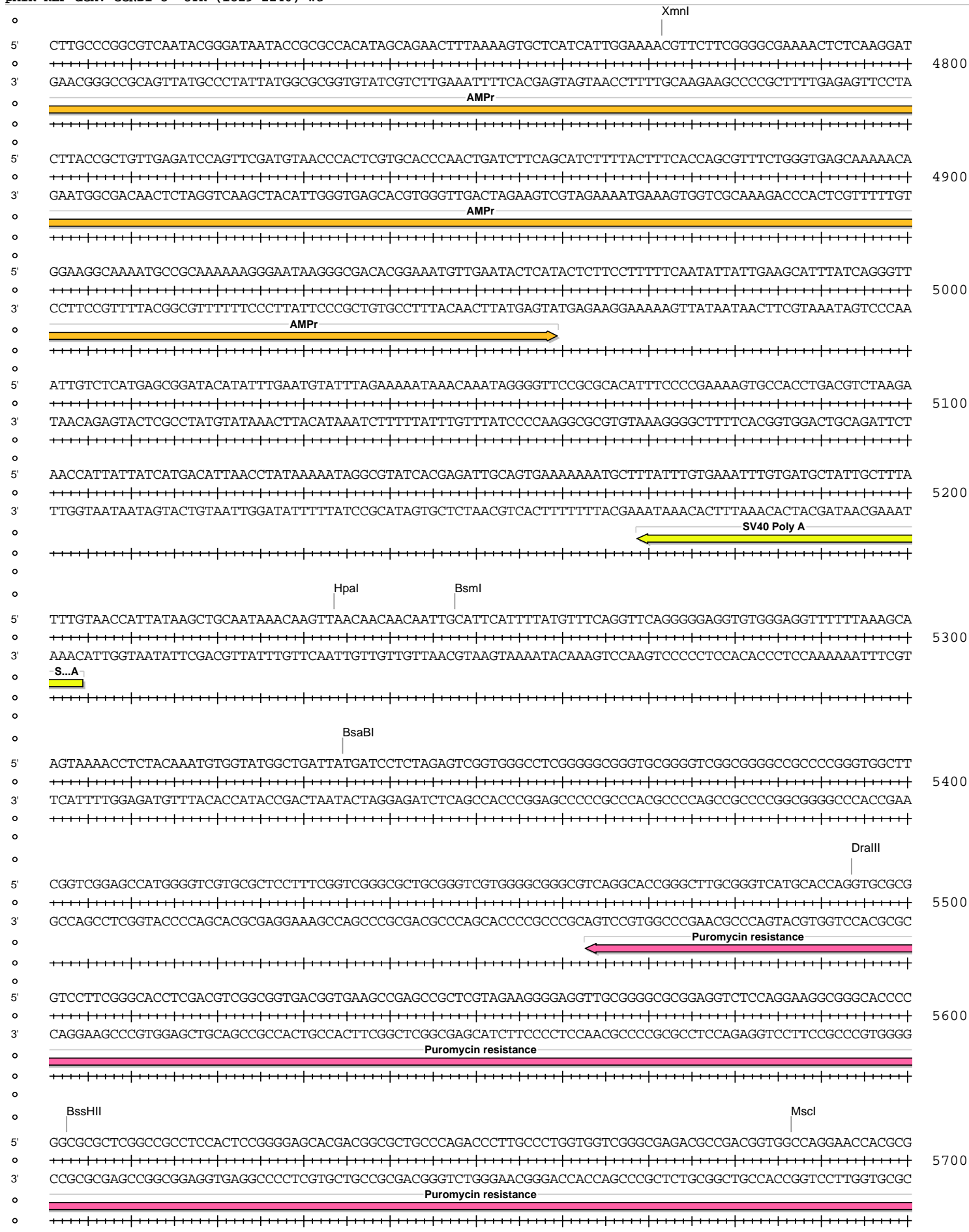


pMIR-REP-dCMV-CCND1 3' UTR (1829-2240) wt



pMIR-REP-dCMV-CCND1 3' UTR (1829-2240) wt





pMIR-REP-dCMV-CCND1 3' UTR (1829-2240) wt

