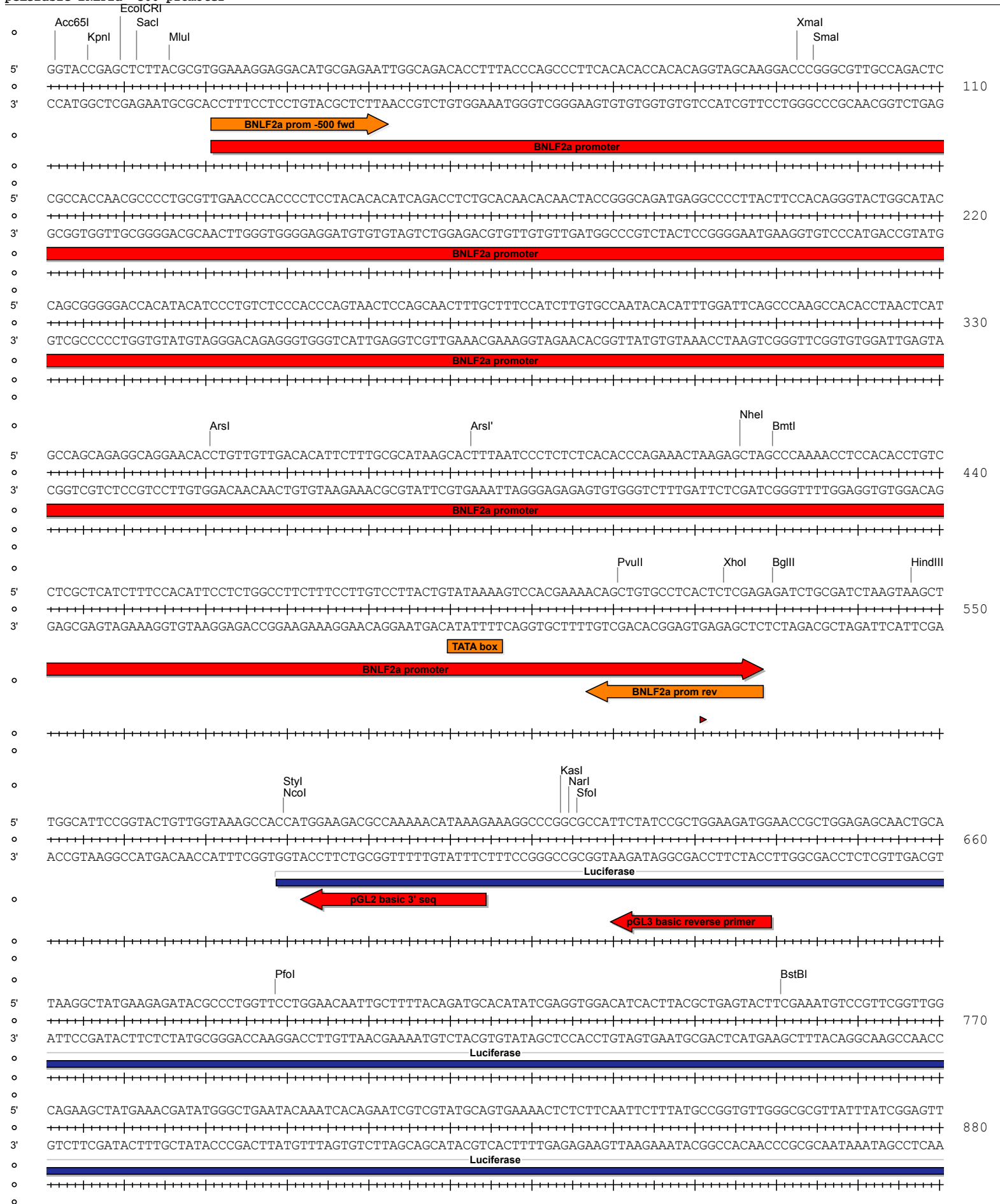


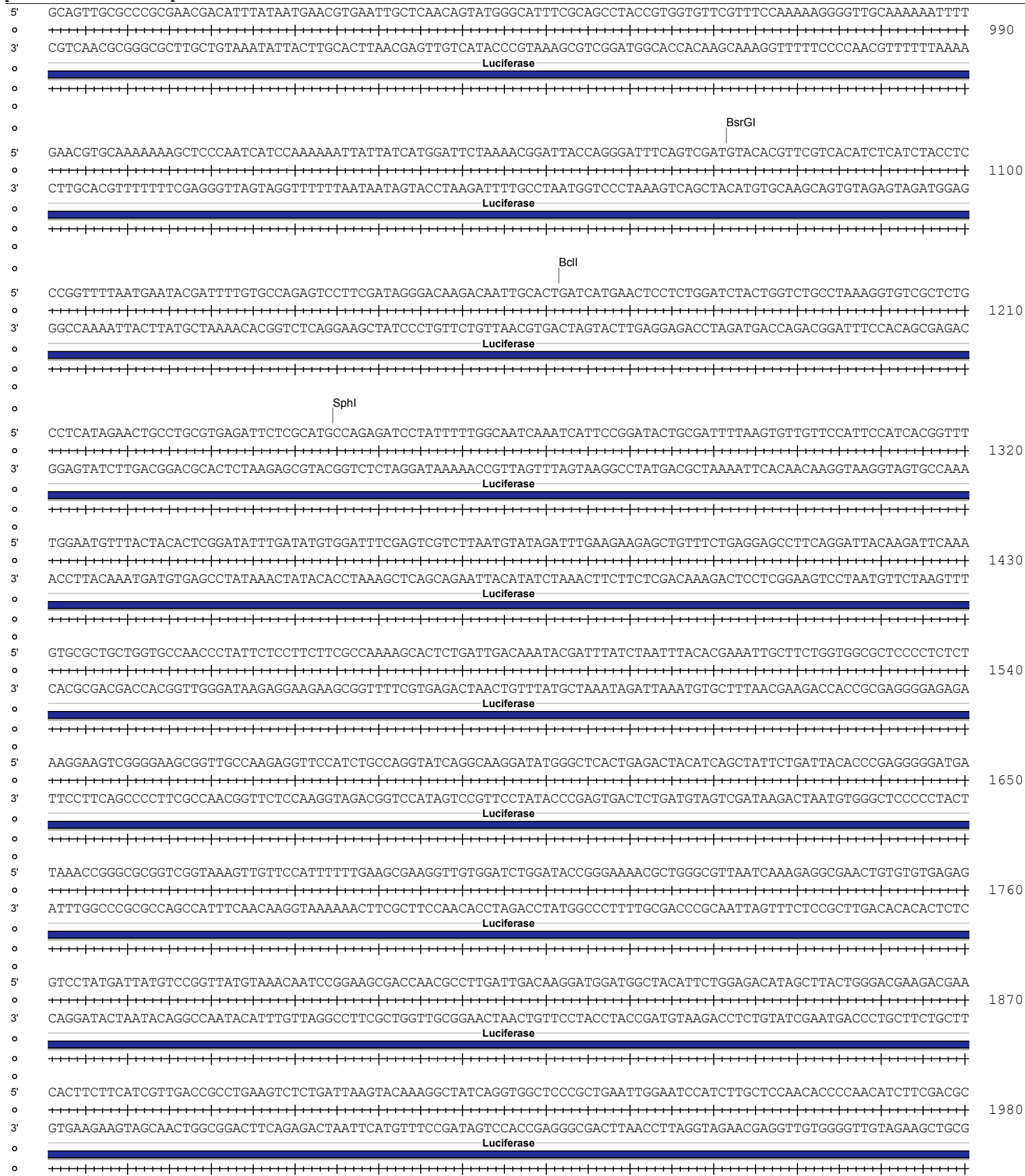
Absent Sites	0	AatII,Abst,AfII,AgeI,AjuI,AjuI',AleI,AflI,AlfI',ApaI,AscI,AsiSI,AvrII,BaeI,BaeI',BarI,BarI',BbvCI,BlpI,BmgBI,Bpu10I,BsiWI,BsmBI,BssHII,BstAPI,BstEII,BstXI,BstZ17I,Bsu36I,CspCI,CspCI',EcoRI,EcoRV,FalI,Fall',FspAI,MauBI,MreI,MscI,NdeI,NruI,NotI,Pacl,PassI,PfIMI,PmeI,PmlI,PspOMI,PspXI,Psrl,Psrl',PstI,RsrII,SacII,SanDI,SbfI,SexAI,SfiI,SgrDI,SnaBI,SpeI,SrfI,StuI,Swal,Tth111I,ZraI
Acc65I	1	2
Accl	1	2505
AfeI	1	2630
AhdI	1	3647
Alol	1	4867
Alol'	1	4835
AlwNI	1	3170
ArsI	1	351
ArsI'	1	383
Asel	1	3819
BamHI	1	2498
BclI	1	1162
BglII	1	530
BmtI	1	420
BsaAI	1	4796
BsaBI	1	2497
BsaI	1	3708
BsrGI	1	1072
BstBI	1	751
BtgZI	1	4791
Drall	1	4799
EcoICRI	1	10
FseI	1	2255
HindIII	1	547
HpaI	1	2396
KasI	1	614
KpnI	1	6
MluI	1	16
NarI	1	615
NcoI	1	580
NheI	1	416
NmeAIII	1	3796
NotI	1	5145
PciI	1	2754
PfoI	1	689
PshAI	1	2569
PvuII	1	511
SacI	1	12
SalI	1	2504
SfoI	1	616
SgrAI	1	2010
SmaI	1	95
SphI	1	1245
StyI	1	580
TstI	1	2145
TstI'	1	2113
XbaI	1	2236
XhoI	1	524
XmaI	1	93

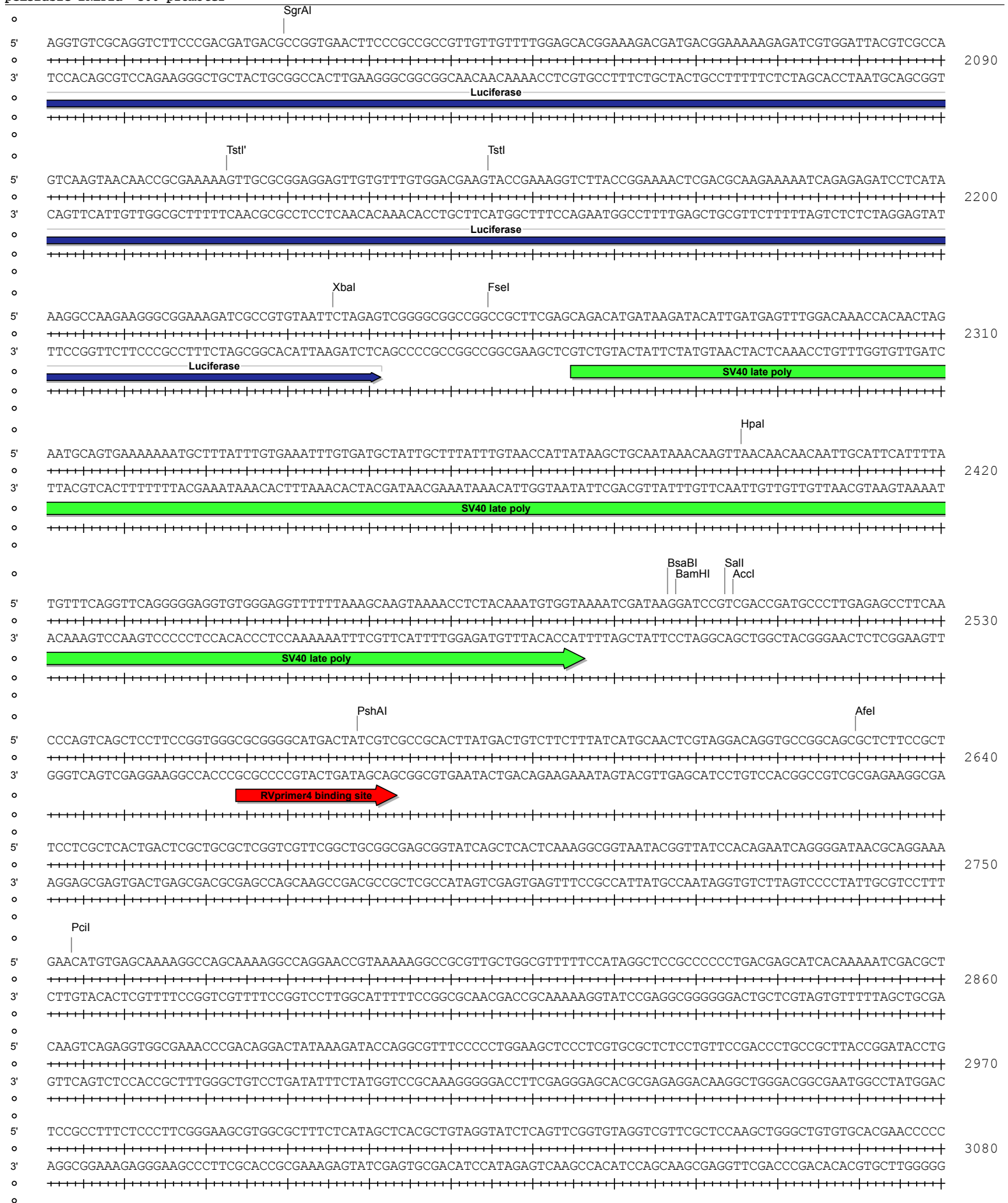
Xmnl 1 4246

pGL3Basic BNLf2a -500 promoter



pGL3Basic BNLf2a -500 promoter





AlwNI

CGTTCAGCCCACCCTGCGCCTTATCCGGTAACTATCGTCTTGAGTCCAACCCGGTAAAGACACGACTTATCGCCACTGGCAGCAGCCACTGGTAACAGGATTAGCAGAG
3190
GCAAGTCGGGCTGGCGACCGGAATAGGCCATTGATAGCAGAACTCAGGTTGGGCCATTCTGTGCTGAATAGCGGTGACCGTCGTGCGGTGACCATTGTCTAATCGTCTC
CGAGGTATGTAGGCGGTGCTACAGAGTCTTGAAGTGGTGGCCTAACTACGGCTACACTAGAAGAACAGTATTTGGTATCTGCGCTCTGCTGAAGCCAGTTACCTTCGGA
3300
GCTCCATACATCCGCCACGATGTCTCAAGAACTTACCACCGGATTGATGCCGATGTGATCTTCTTGTCATAAACCATAGACGCGAGACGACTTCGGTCAATGGAAGCCT
AAAAGAGTTGGTAGTCTTGATCCGGCAAACAAACCACCGCTGGTAGCGGTGGTTTTTTTTGTTTGAAGCAGCAGATTACGCGCAGAAAAAAGGATCTCAAGAAGATCC
3410
TTTTCTCAACCATCGAGAACTAGGCCGTTTGGTTGGTGGCGACCATCGCCACCAAAAAACAAACGTTTCGTCTAATGCGCGTCTTTTTTCTAGAGTCTTCTTAGG
TTTGATCTTTTCTACGGGTCTGACGCTCAGTGAACGAAAACACGTTAAGGGATTTGGTCATGAGATTATCAAAAAGGATCTTACCTAGATCTTTTAAATTTAA
3520
AAACTAGAAAAGATGCCCCAGACTGCGAGTCACCTTGCTTTGAGTGAATTCCTTAAACCAGTACTTAATAGTTTTTCTAGAAAGTGGATCTAGGAAAATTTAATTT
AATGAAGTTTAAATCAATCTAAAGTATATATAGTAAACTTGGTCTGACAGTTACCAATGCTTAATCAGTGAGGCACCTATCTCAGCGATCTGTCTATTTTCGTTTCATCC
3630
TTACTTCAAAATTTAGTTAGATTTTATATATACTCATTGAACCAGACTGTCAATGGTTACGAATTAGTCACTCCGTGGATAGAGTCGCTAGACAGATAAAGCAAGTAGG

beta-lactamase
AmpR

AhdI BsaI

ATAGTTGCTGACTCCCCGTCGTGTAGATAACTACGATACGGGAGGGCTTACCATCTGGCCCCAGTGTGCAATGATACCGCGAGACCACGCTCACCAGGCTCCAGATTT
3740
TATCAACGGACTGAGGGGACGACATCTATTGATGCTATGCCCTCCGGAATGGTAGACGGGGTCACGACGTTACTATGGCGCTCTGGGTGCGAGTGCCGAGGTCTAAA

beta-lactamase
AmpR

NmeAIII AseI

ATCAGCAATAAACAGCCAGCCGGAAGGGCCGAGCGCAGAAGTGGTCTGCACTTTATCCGCTCCATCCAGTCTATTAATTTGTTGCCGGAAGCTAGAGTAAGTAGTT
3850
TAGTCGTTATTTGGTTCGGCTCCCGGCTCGCGTCTTACCAGGACGTTGAAATAGCGGAGGTAGGTGAGATAATTAACAACGGCCCTTCGATCTCATTCATCAA

beta-lactamase
AmpR

CGCCAGTTAATAGTTTGCACAACGTTGTTGCCATTGCTACAGGCATCGTGGTGTACGCTCGTCTTGGTATGGCTTCATTCAGCTCCGTTCCCAACGATCAAGGCGA
3960
GCGGTCAATTATCAAACGCGTTGCAACAACGGTAACGATGTCGCTAGCACCACAGTGCAGCAGCAAACCATAACGAAGTAAGTCGAGGCCAAGGTTGCTAGTTCGCT

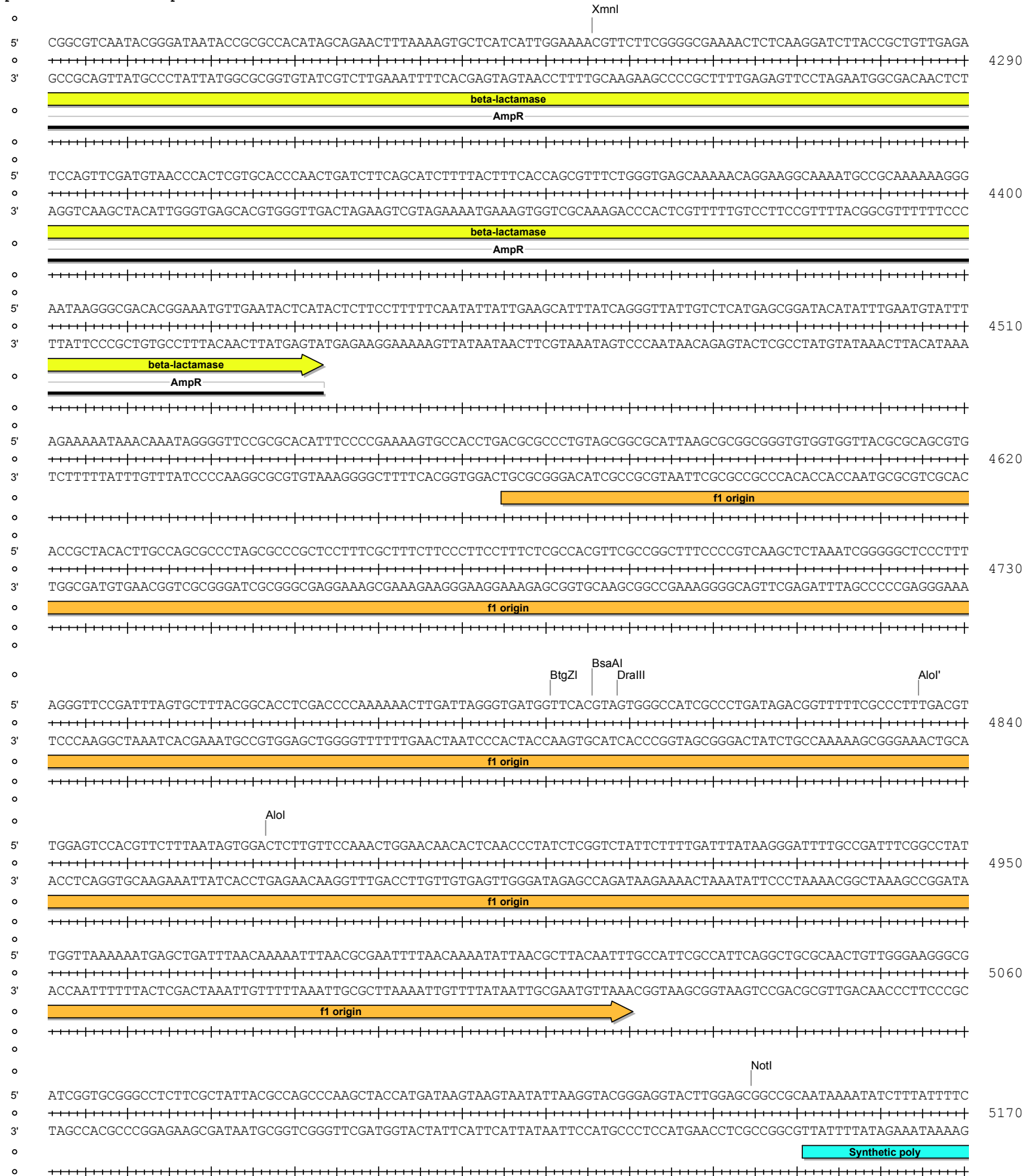
beta-lactamase
AmpR

GTTACATGATCCCCATGTTGTGCAAAAAAGCGGTTAGCTCCTTCGGTCCCTCCGATCGTGTGTCAGAAGTAAGTTGGCCGAGTGTATCACTCATGGTTATGGCAGCACT
4070
CAATGTACTAGGGGTACAACACGTTTTTTTCGCCAATCGAGGAAGCCAGGAGGTAGCAACAGTCTTCATTCAACCGCGTCACAATAGTGAGTACCAATACCGTTCGTA

beta-lactamase
AmpR

GCATAATCTCTTACTGTATGCCATCCGTAAGATGCTTTTCTGTGACTGGTACTCAACCAAGTCAATCTGAGAATAGTGTATGCGGCGACCGAGTTGCTCTTGCC
4180
CGTATTAAGAGAATGACAGTACGGTAGGCATTTCTACGAAAAGACACTGACCACTCATGAGTTGGTTCAGTAAGACTCTTATCATAACCGGCTGGCTCAACGAGAACGG

beta-lactamase
AmpR



pGL3Basic BNLf2a -500 promoter

