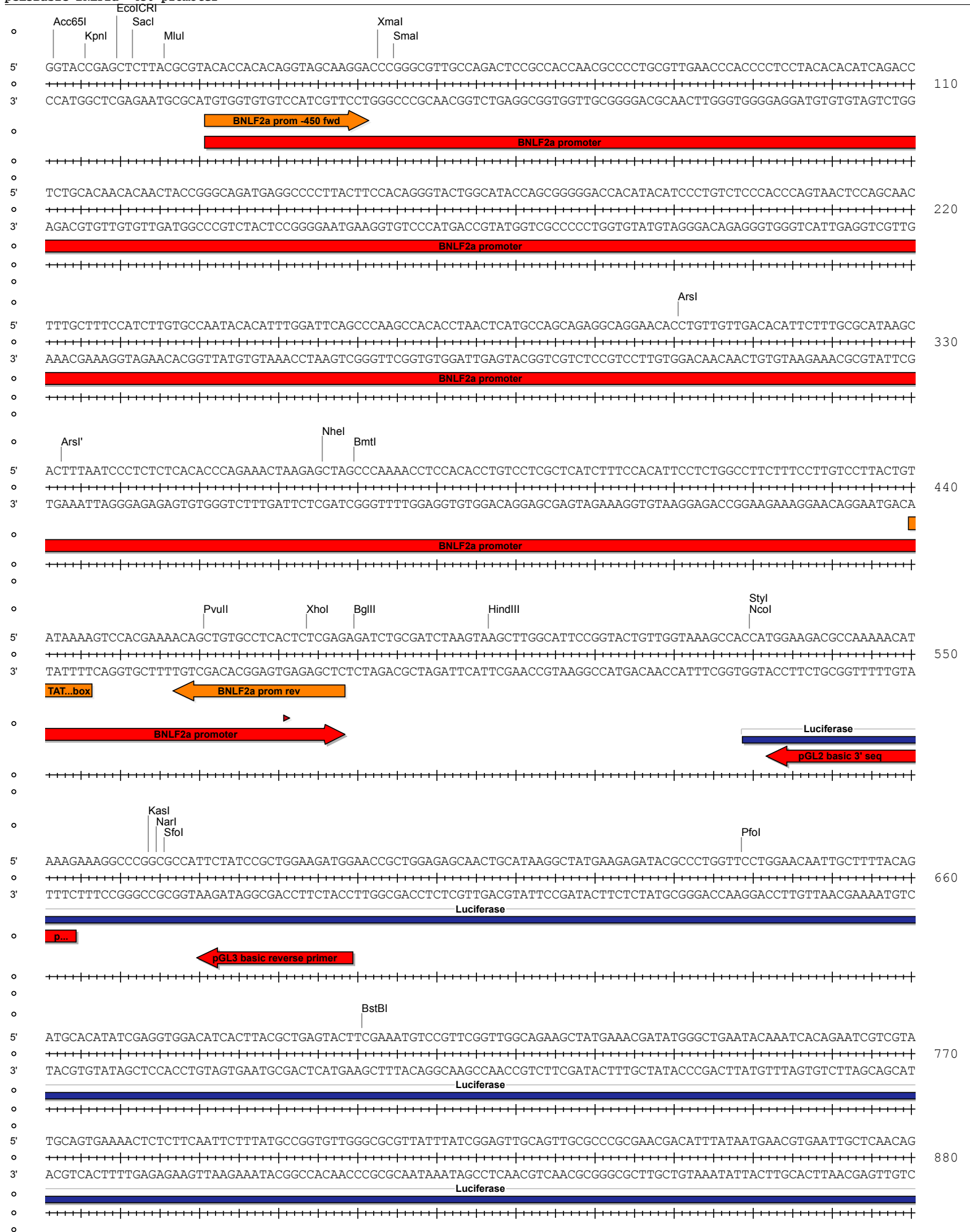


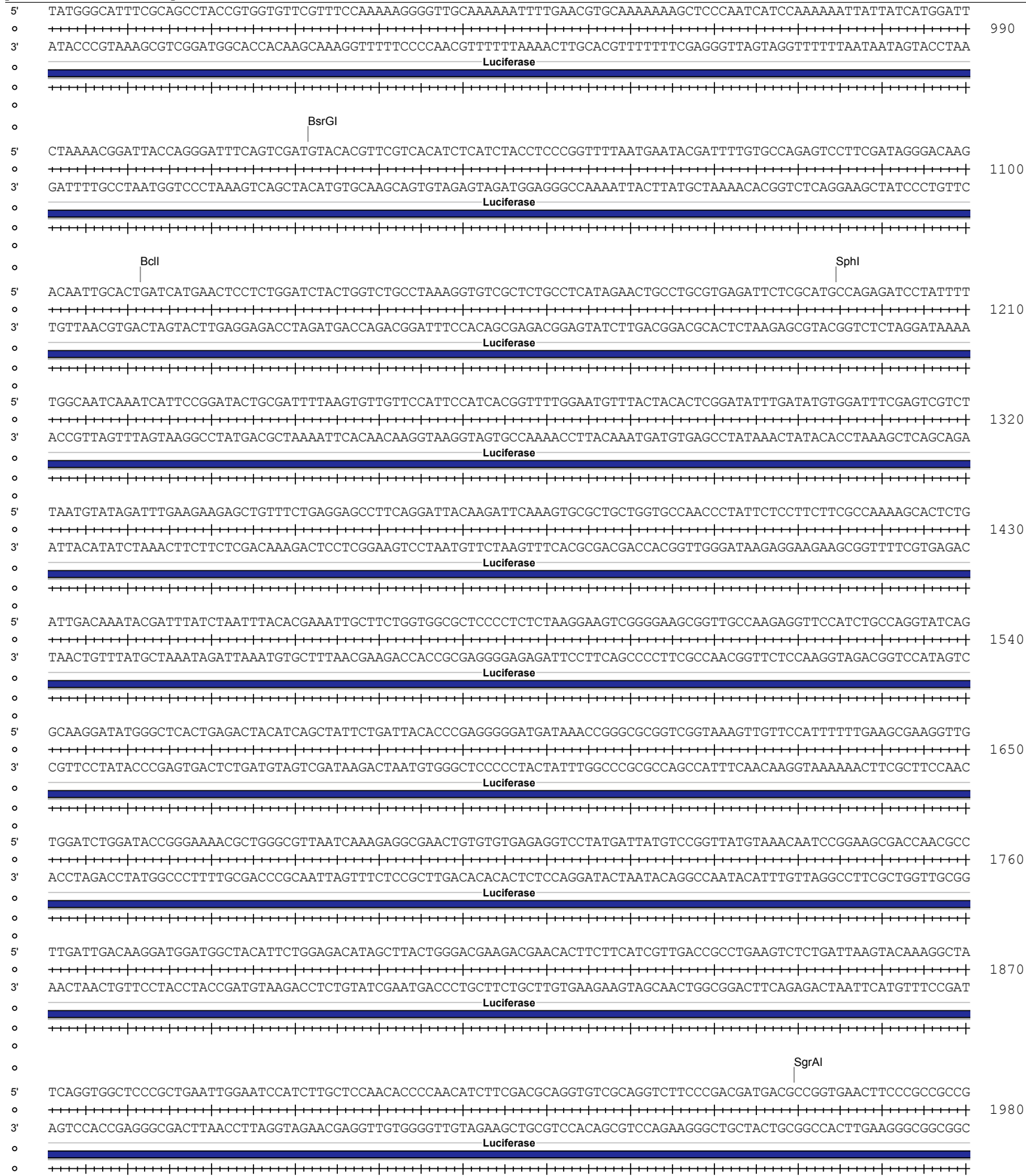
Absent Sites	0	AatII,Abst,AfII,AgeI,AjuI,AjuI',AleI,AflI,AlfI',ApaI,AscI,AsiSI,AvrII,BaeI,BaeI',BarI,BarI',BbvCI,BlpI,BmgBI,Bpu10I,BsiWI,BsmBI,BssHII,BstAPI,BstEII,BstXI,BstZ17I,Bsu36I,CspCI,CspCI',EcoRI,EcoRV,FalI,Fall',FspAI,MauBI,MreI,MscI,NdeI,NruI,NotI,Pacl,PassI,PfIMI,PmeI,PmlI,PspOMI,PspXI,Psrl,Psrl',PstI,RsrII,SacII,SanDI,SbfI,SexAI,SfiI,SgrDI,SnaBI,SpeI,SrfI,StuI,Swal,Tth111I,ZraI
Acc65I	1	2
Accl	1	2455
AfeI	1	2580
AhdI	1	3597
Alol	1	4817
Alol'	1	4785
AlwNI	1	3120
ArsI	1	301
ArsI'	1	333
Asel	1	3769
BamHI	1	2448
BclI	1	1112
BglII	1	480
BmtI	1	370
BsaAI	1	4746
BsaBI	1	2447
BsaI	1	3658
BsrGI	1	1022
BstBI	1	701
BtgZI	1	4741
Drall	1	4749
EcoICRI	1	10
FseI	1	2205
HindIII	1	497
HpaI	1	2346
KasI	1	564
KpnI	1	6
MluI	1	16
NarI	1	565
NcoI	1	530
NheI	1	366
NmeAIII	1	3746
NotI	1	5095
PciI	1	2704
PfoI	1	639
PshAI	1	2519
PvuII	1	461
SacI	1	12
SalI	1	2454
SfoI	1	566
SgrAI	1	1960
SmaI	1	45
SphI	1	1195
StyI	1	530
TstI	1	2095
TstI'	1	2063
XbaI	1	2186
XhoI	1	474
XmaI	1	43

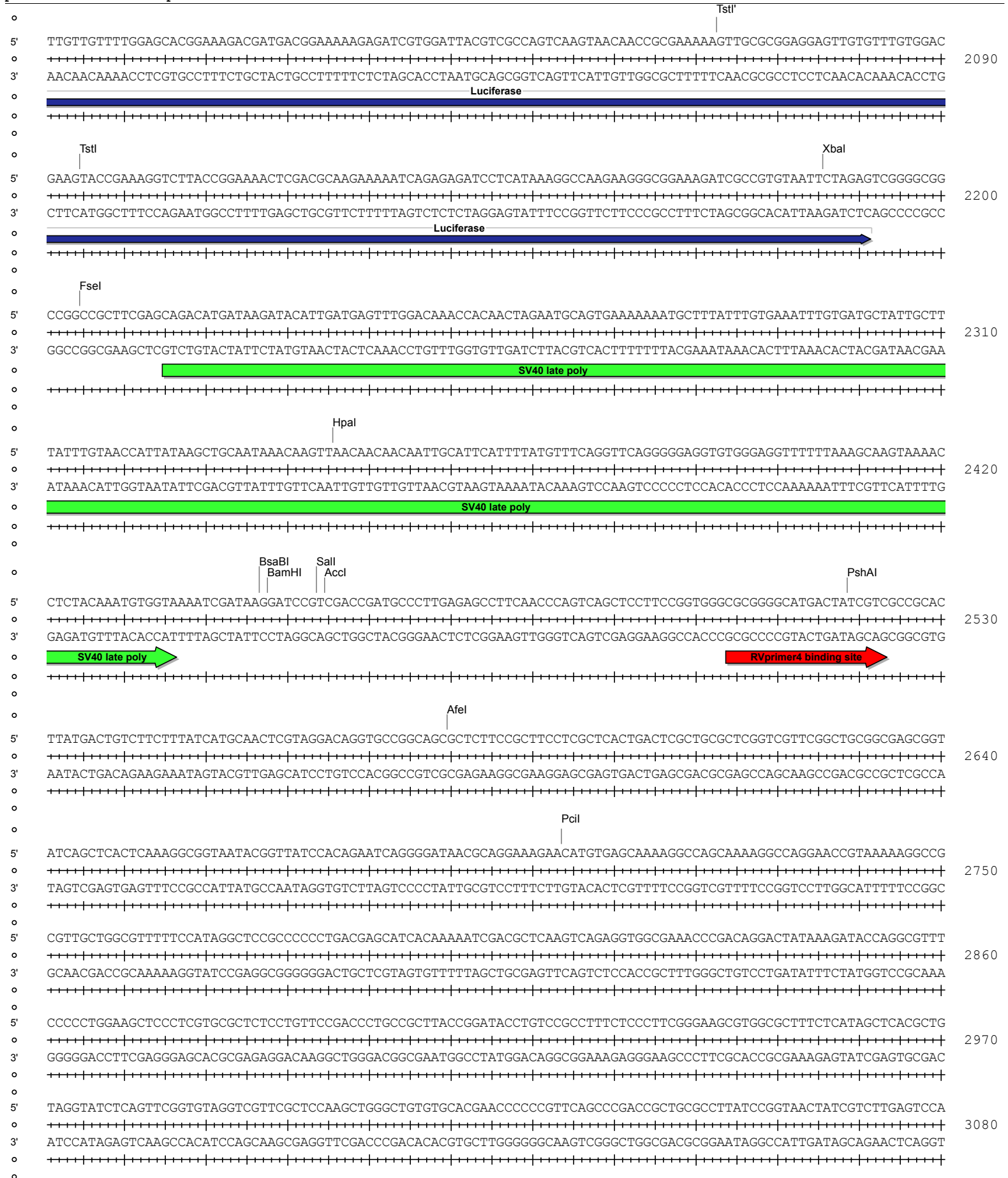
Xmnl 1 4196

pGL3Basic BNLf2a -450 promoter



pGL3Basic BNLf2a -450 promoter







pGL3Basic BNLF2a -450 promoter

