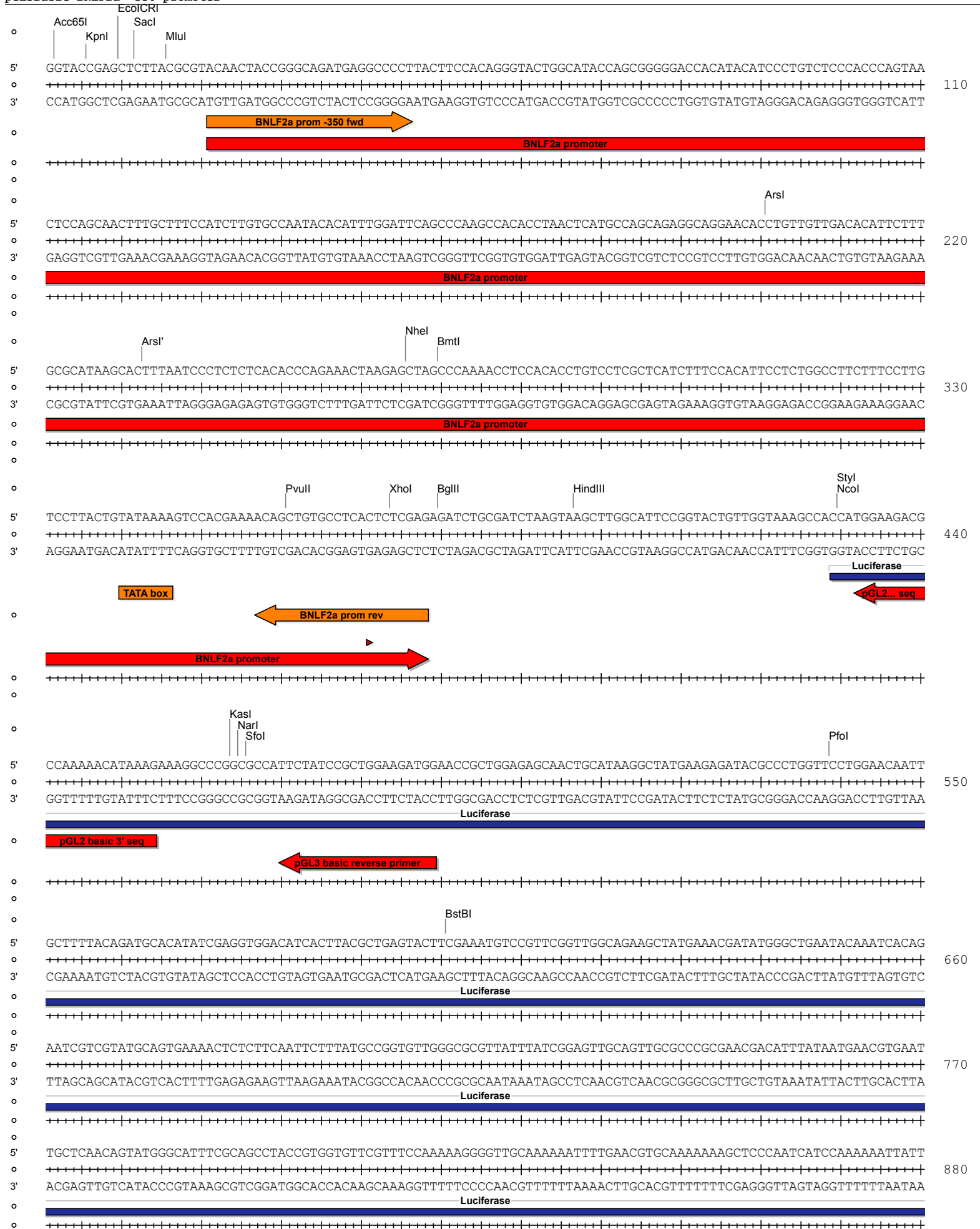
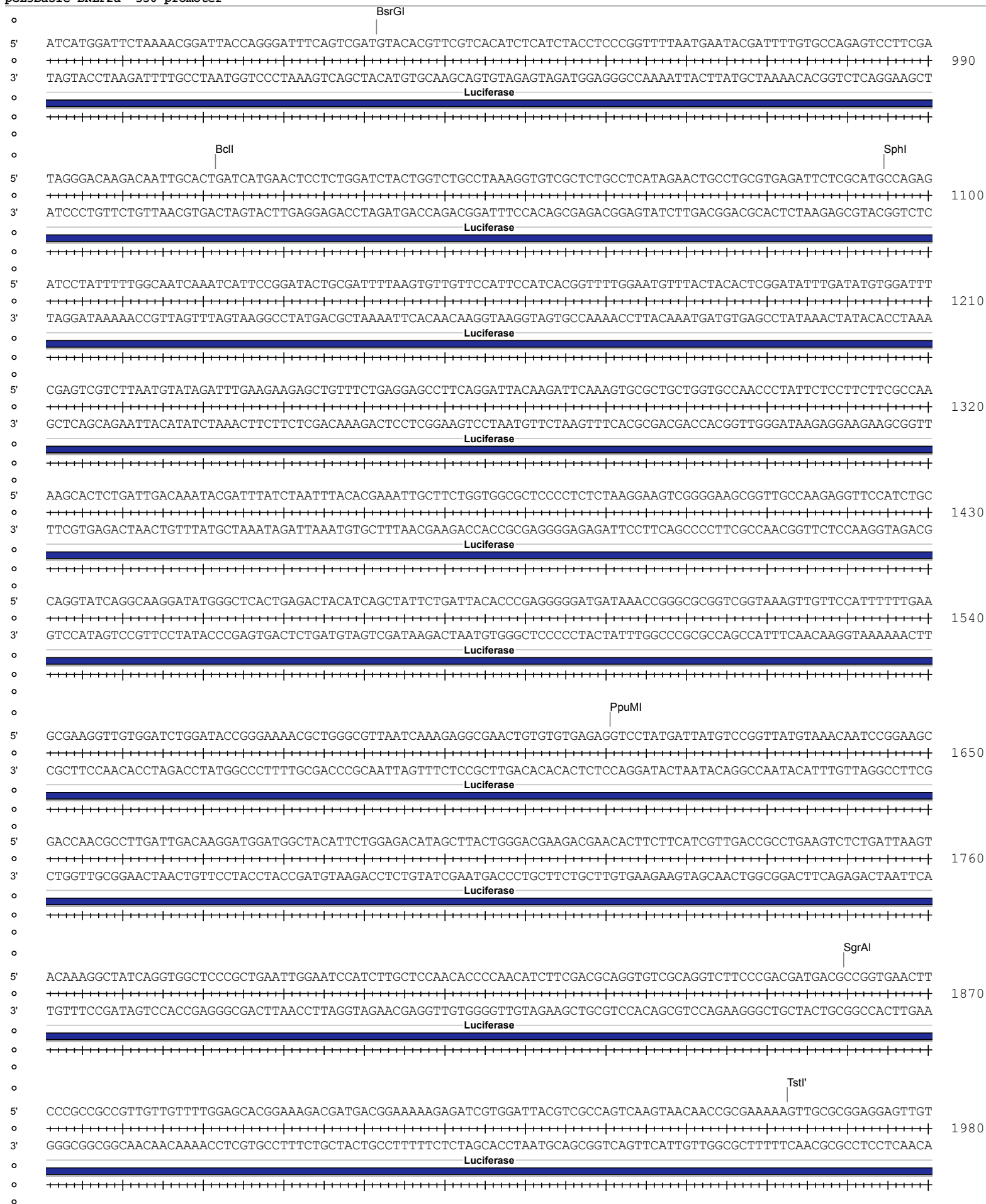


Absent Sites	0	AatII,Abst,AfII,Agel,Ajul,Ajul',AleI,AflI,AlfI',ApaI,AscI,AsiSI,AvrII,BaeI,BaeI',BarI,BarI',BbvCI,BlpI,BmgBI,Bpu10I,BsiWI,BsmBI,BssHII,BstAPI,BstEII,BstXI,BstZ17I,Bsu36I,CspCI,CspCI',EcoRI,EcoRV,FalI,Fall',FspAI,MauBI,MreI,MscI,NdeI,NruI,NotI,Pacl,PassI,PfIMI,PmeI,PmlI,PspOMI,PspXI,Psrl,Psrl',PstI,RsrII,SacII,SanDI,SbfI,SexAI,SfiI,SgrDI,Smal,SnaBI,SpeI,SrfI,StuI,Swal,Tth111I,XmaI,ZraI
Acc65I	1	2
Accl	1	2355
AfeI	1	2480
AhdI	1	3497
Alol	1	4717
Alol'	1	4685
AlwNI	1	3020
ArsI	1	201
ArsI'	1	233
Asel	1	3669
BamHI	1	2348
BclI	1	1012
BglII	1	380
BmtI	1	270
BsaAI	1	4646
BsaBI	1	2347
BsaI	1	3558
BsgI	1	5153
BsrGI	1	922
BstBI	1	601
BtgZI	1	4641
Drall	1	4649
EcoICRI	1	10
FseI	1	2105
HindIII	1	397
HpaI	1	2246
KasI	1	464
KpnI	1	6
MluI	1	16
NarI	1	465
NcoI	1	430
NheI	1	266
NmeAIII	1	3646
NotI	1	4995
PciI	1	2604
PfoI	1	539
PpuMI	1	1611
PshAI	1	2419
PvuII	1	361
SacI	1	12
SalI	1	2354
SfoI	1	466
SgrAI	1	1860
SphI	1	1095
StyI	1	430
TstI	1	1995
TstI'	1	1963
XbaI	1	2086
XhoI	1	374

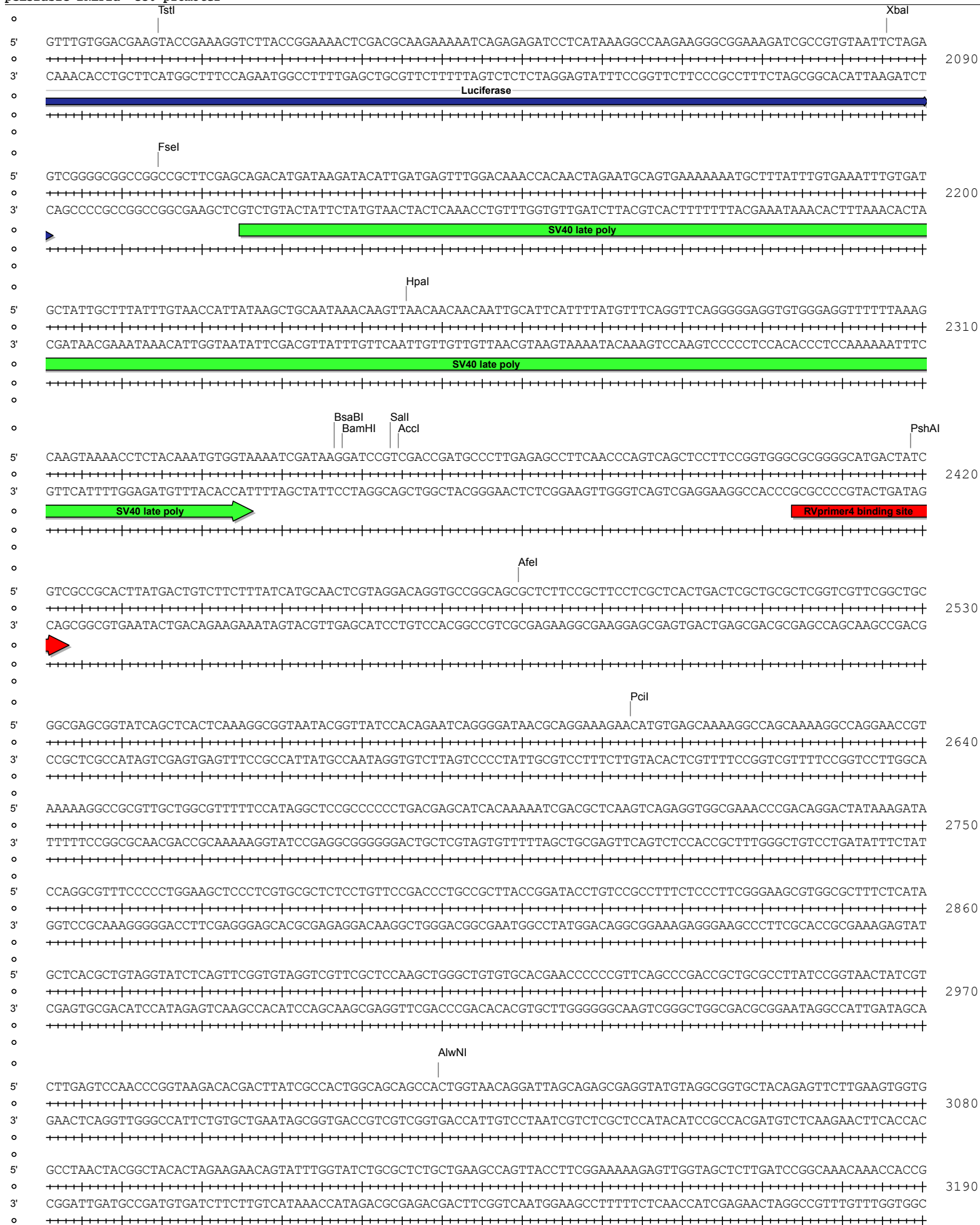
Xmnl 1 4096

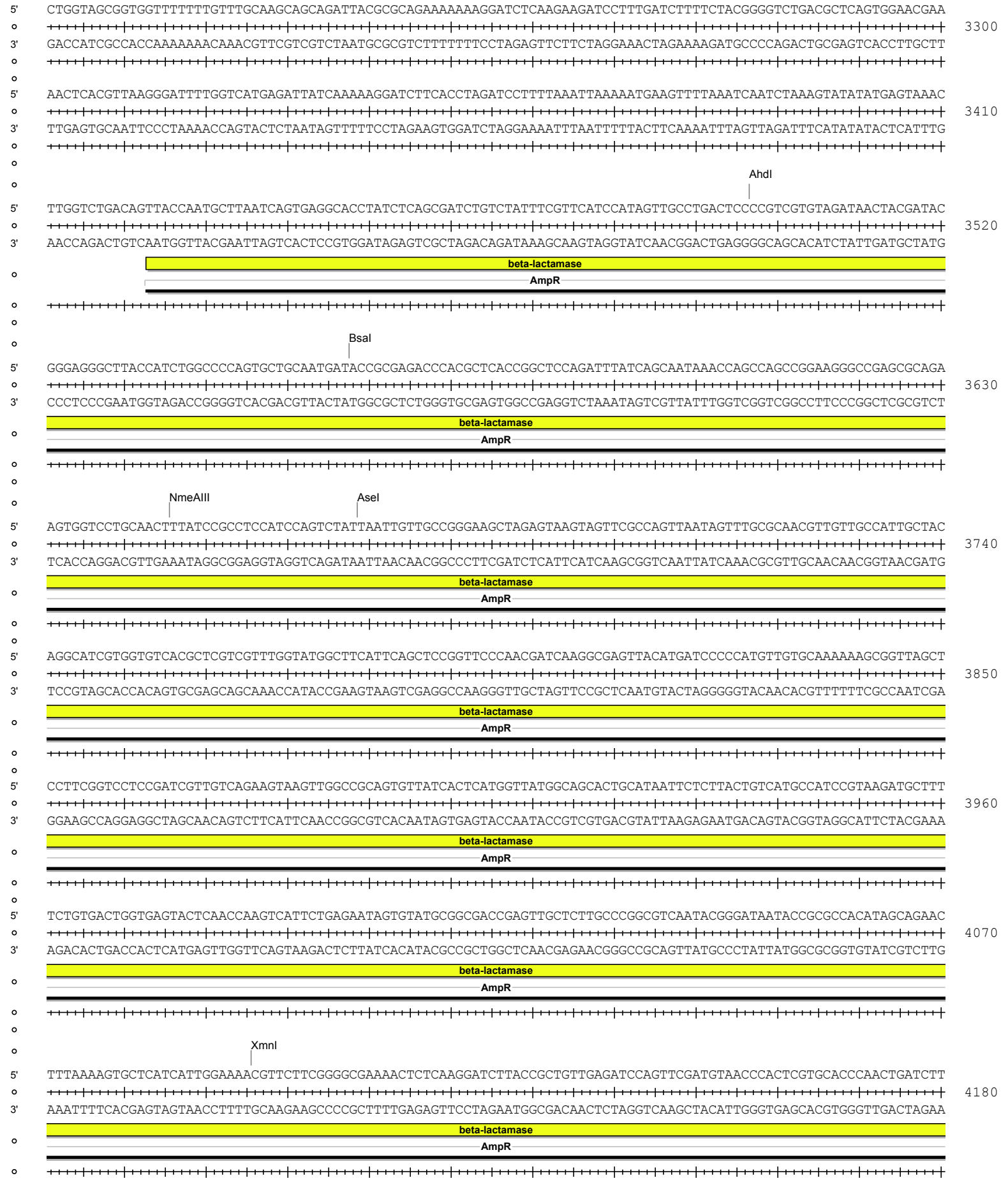
pGL3Basic BNLf2a -350 promoter





pGL3Basic BNLf2a -350 promoter





pGL3Basic BNLf2a -350 promoter

