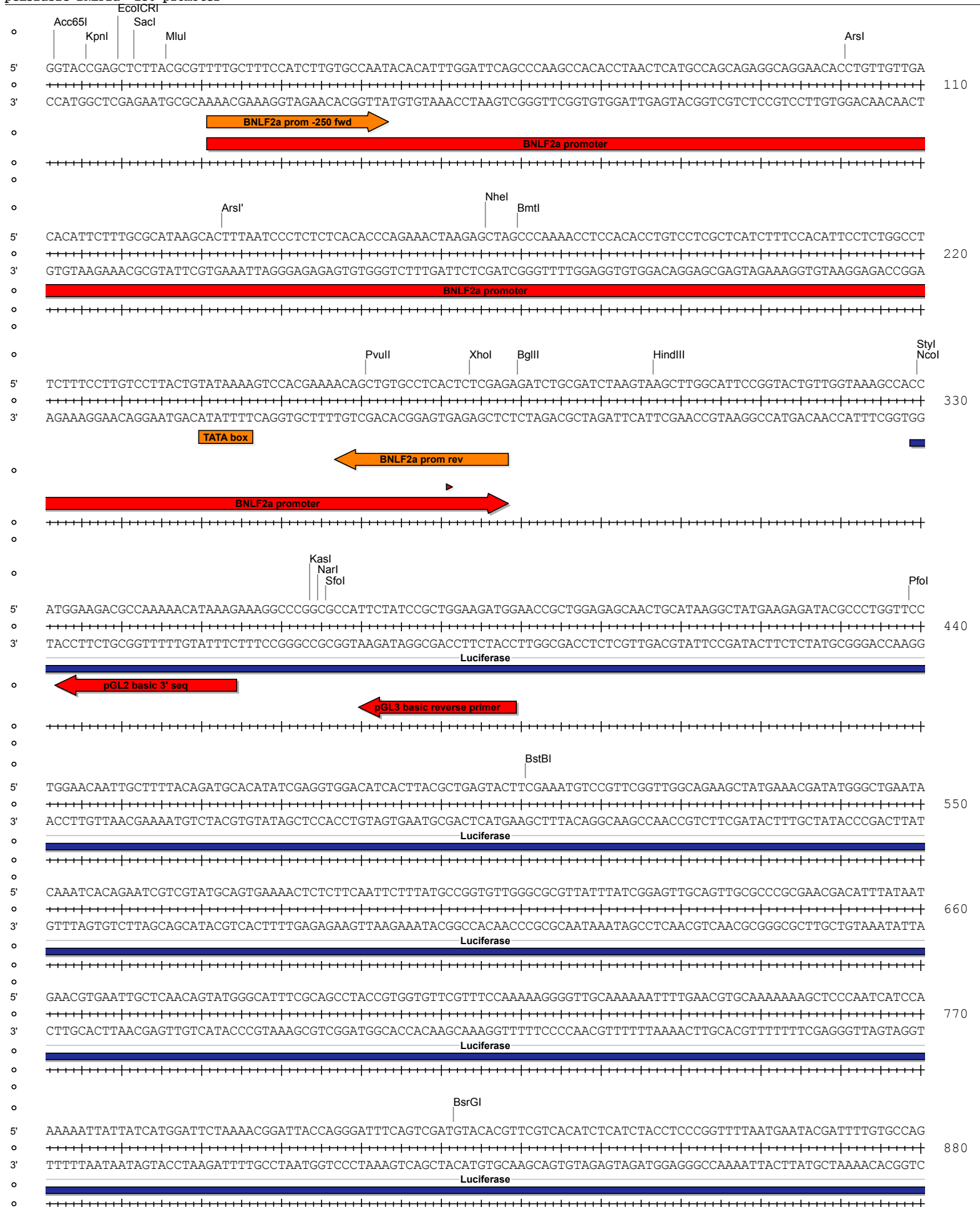
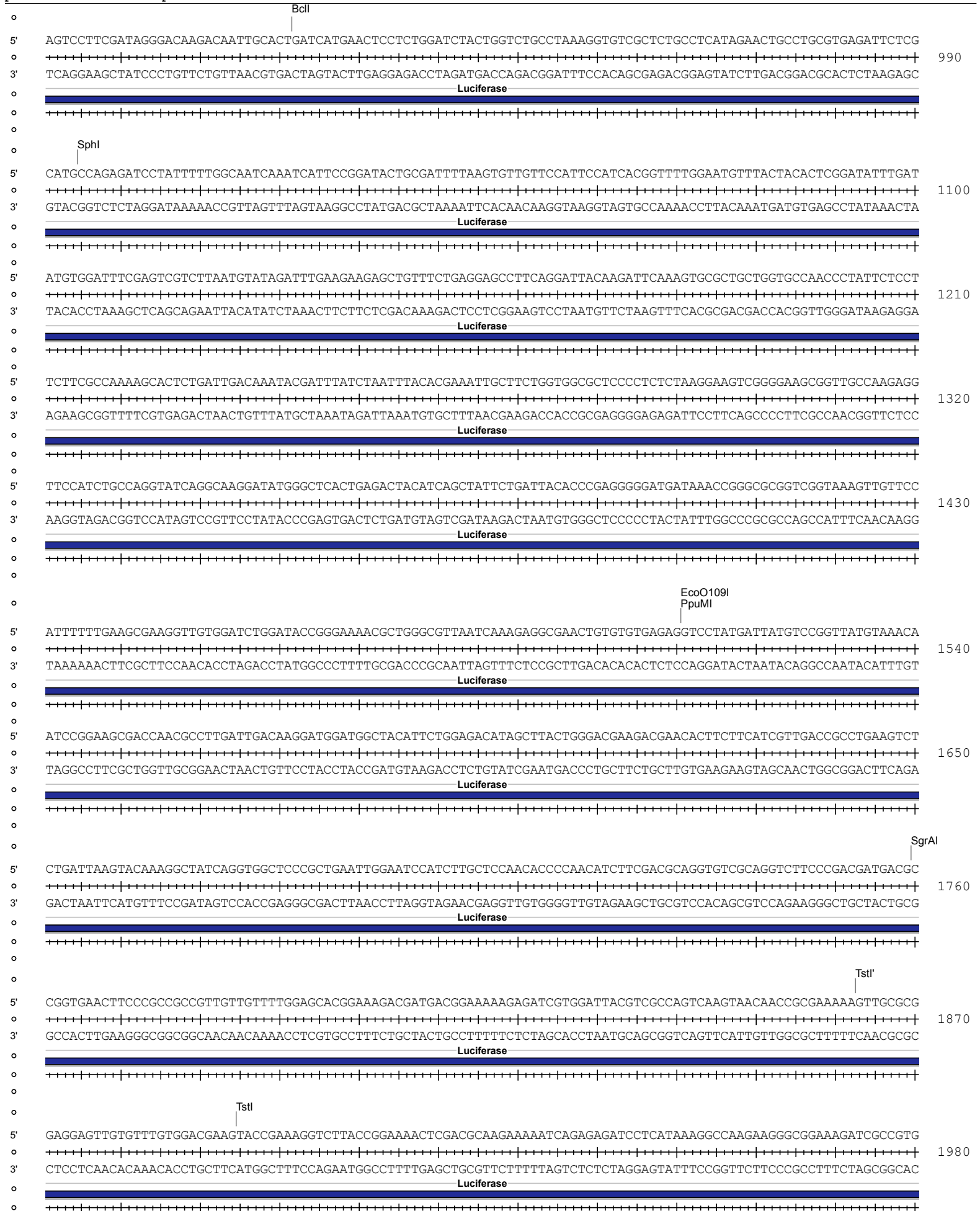


Absent Sites	0	AatII,Abst,AfII,Agel,Ajul,Ajul',AleI,AflI,AlfI',ApaI,AscI,AsiSI,AvrII,BaeI,BaeI',BarI,BarI',BbvCI,BlpI,BmgBI,Bpu10I,BsiWI,BsmBI,BssHII,BstAPI,BstEII,BstXI,BstZ17I,Bsu36I,CspCI,CspCI',EcoRI,EcoRV,FalI,Fall',FspAI,MauBI,MreI,MscI,NdeI,NruI,NotI,Pacl,PassI,PfIMI,PmeI,PmlI,PspOMI,PspXI,Psrl,Psrl',PstI,RsrII,SacII,SanDI,Sbfl,SexAI,SfiI,SgrDI,Smal,SnaBI,SpeI,SrfI,StuI,Swal,Tth111I,XmaI,ZraI
Acc65I	1	2
Accl	1	2255
AfeI	1	2380
AhdI	1	3397
Alol	1	4617
Alol'	1	4585
AlwNI	1	2920
ArsI	1	101
ArsI'	1	133
Asel	1	3569
BamHI	1	2248
BclI	1	912
BglII	1	280
BmtI	1	170
BsaAI	1	4546
BsaBI	1	2247
BsaI	1	3458
BsgI	1	5053
BsrGI	1	822
BstBI	1	501
BtgZI	1	4541
Drall	1	4549
EcoCRI	1	10
EcoO109I	1	1511
FseI	1	2005
HindIII	1	297
HpaI	1	2146
KasI	1	364
KpnI	1	6
MluI	1	16
NarI	1	365
NcoI	1	330
NheI	1	166
NmeAIII	1	3546
NotI	1	4895
PciI	1	2504
PfoI	1	439
PpuMI	1	1511
PshAI	1	2319
PvuII	1	261
SacI	1	12
Sall	1	2254
SfoI	1	366
SgrAI	1	1760
SphI	1	995
StyI	1	330
TstI	1	1895
TstI'	1	1863
XbaI	1	1986

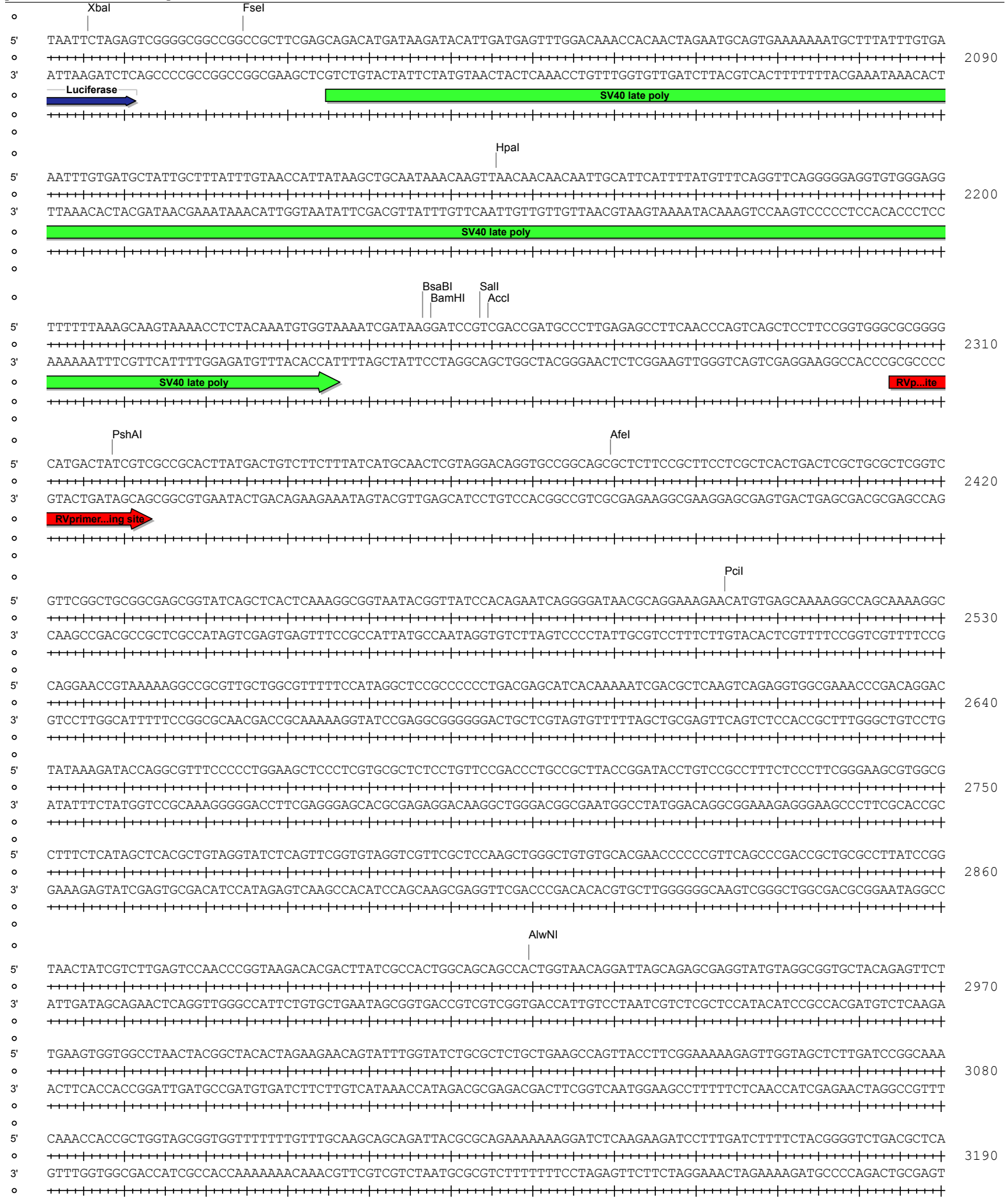
XhoI	1	274
XmnI	1	3996

pGL3Basic BNL2a -250 promoter





pGL3Basic BNLf2a -250 promoter



pGL3Basic BNLf2a -250 promoter

5' GTGGAACGAAAACCTCACGTTAAGGGATTTGGTCATGAGATTATCAAAAAGGATCTTACCTAGATCCCTTTTAAATTAATAAATGAAGTTTAAATCAATCTAAAGTATAT 3300  
 3' CACCTTGCTTTTGGAGTGAATTCCTTAAAACCAGTACTCTAATAGTTTTTCCTAGAAGTGGATCTAGGAAAATTAATTTTTACTTCAAATTTAGTTAGATTTCATATA

AhdI

5' ATGAGTAAACTTGGTCTGACAGTTACCAATGCTTAATCAGTGAGGCACCTATCTCAGCGATCTGTCTATTTTCGTTTCATCCATAGTTGCCTGACTCCCCGTCGTGTAGATA 3410  
 3' TACTCATTGAACCAGACTGTCAATGGTTACGAATTAGTCACTCCGTGGATAGAGTCGCTAGACAGATAAAGCAAGTAGGTATCAACGGACTGAGGGGCAGCACATCTAT

**beta-lactamase**  
AmpR

BsaI

5' ACTACGATACGGGAGGGCTTACCATCTGGCCCCAGTGTGCAATGATACCGCGAGACCCACGCTCACCGGCTCCAGATTATCAGCAATAAACCAGCCAGCCGGAAGGGC 3520  
 3' TGATGCTATGCCCTCCGGAATGGTAGACCGGGGTCACGACGTTACTATGGCGCTCTGGGTGCGAGTGGCCGAGGTCTAAATAGTCGTTATTTGGTCGGTCCGCTTCCCG

**beta-lactamase**  
AmpR

NmeAIII                      AseI

5' CGAGCGCAGAAGTGGTCCGCACTTTATCCGCTCCATCCAGTCTATTAATGTTGCCGGGAAGCTAGAGTAAGTAGTTCGCCAGTTAATAGTTTGGCAACGTTGTTG 3630  
 3' GCTCGCGTCTTACCAGGACGTTGAAATAGCGGAGGTAGGTGAGATAATTAACAACGCCCTTCGATCTCATTCATCAAGCGGTCAATTATCAAACGCGTTGCAACAAC

**beta-lactamase**  
AmpR

5' CCATTGCTACAGGCATCGTGGTGTACGCTCGTCGTTTGGTATGGCTTCATTCAGCTCCGGTTCCCAACGATCAAGGCGAGTTACATGATCCCCATGTTGTGCAAAAAA 3740  
 3' GGTAACGATGTCGCTAGCACCACAGTGCAGCAGCAAACCATAACCGAAGTAAGTCGAGGCCAAGGGTGTAGTTCGCTCAATGTACTAGGGGTACAACACGTTTTTT

**beta-lactamase**  
AmpR

5' GCGGTTAGCTCCTTCGGTCCCGATCGTGTGTCAGAAGTAAGTTGGCCGAGTGTATCACTCATGGTTATGGCAGCACTGCATAATCTCTTACTGTCATGCCATCCGT 3850  
 3' CGCCAATCGAGGAAGCCAGGAGGTAGCAACAGTCTTCATTCAACCGCGTCAACAATAGTGAGTACCAATACCGTCTGACGTATTAAGAGAATGACAGTACGGTAGGCA

**beta-lactamase**  
AmpR

5' AAGATGCTTTTCTGTGACTGGTGTACTCAACCAAGTCATCTGAGAATAGTGTATGCGGCGACCGAGTTGCTCTTGCCCGGCGTCAATACGGGATAATACCGGCCAC 3960  
 3' TTCTACGAAAAGACACTGACCCTCATGAGTTGGTTCAGTAAGACTCTTATCATATACGCCGCTGGCTCAACGAGAACGGGCCGAGTTATGCCCTATTTATGGCGCGGTG

**beta-lactamase**  
AmpR

XmnI

5' ATAGCAGAACTTTAAAAGTGTCTCATCTGGAAAACGTTCTTTCGGGGCGAAAACCTCTCAAGGATCTTACCCTGTTGAGATCCAGTTCGATGTAACCCACTCGTGCACCC 4070  
 3' TATCGTCTTGAATTTTACAGAGTAGTAACCTTTTGAAGAAGCCCGCTTTTGGAGGTTCCTAGAATGGCGACAACCTTAGGTCAAGCTACATTTGGGTGAGCACGTTGGG

**beta-lactamase**  
AmpR

5' AACTGATCTTCAGCATCTTTACTTTTACCAGCGTTTCTGGGTGAGCAAAAACAGGAAGGCAAAAATGCCGCAAAAAGGGAATAAGGGCGACACGGAAATGTTGAATACT 4180  
 3' TTACTAGAAGTCTGAGAAAATGAAAGTGGTCGAAAGACCCACTCGTTTTTGTCTCCGTTTTTACGGCGTTTTTCCCTTATCCGCTGTGCCTTTACAACCTATGA

**beta-lactamase**  
AmpR

pGL3Basic BNLf2a -250 promoter

