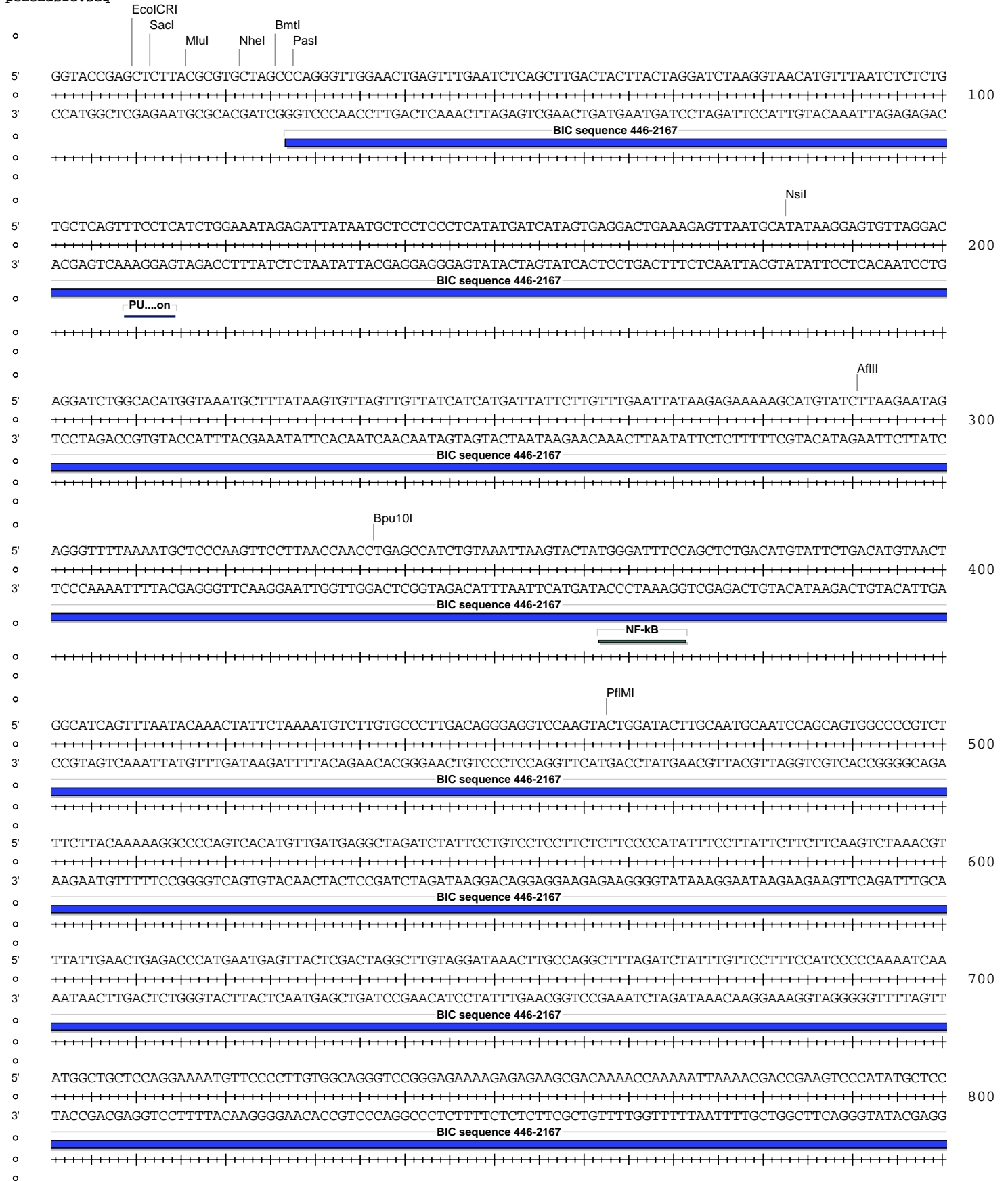
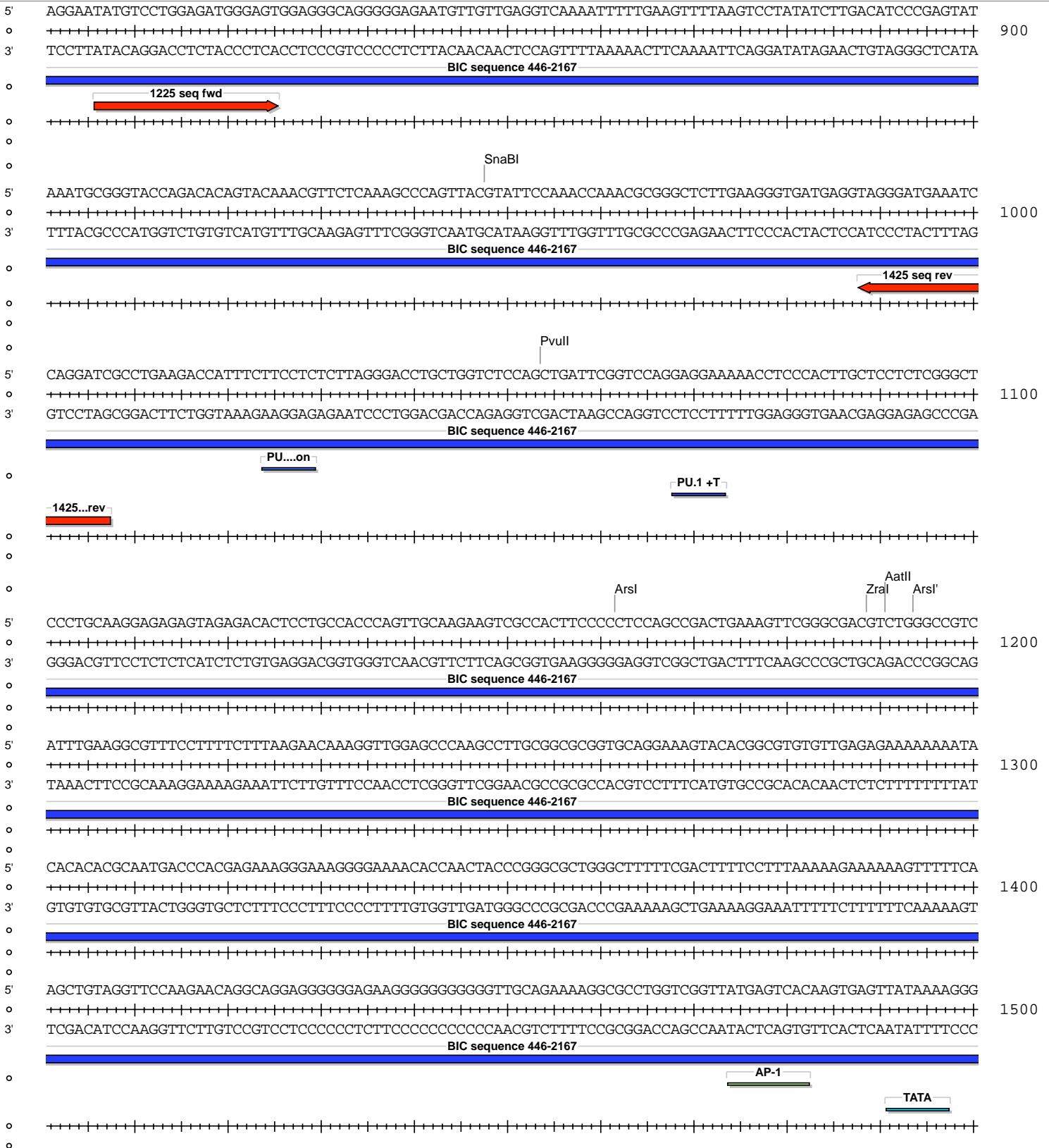
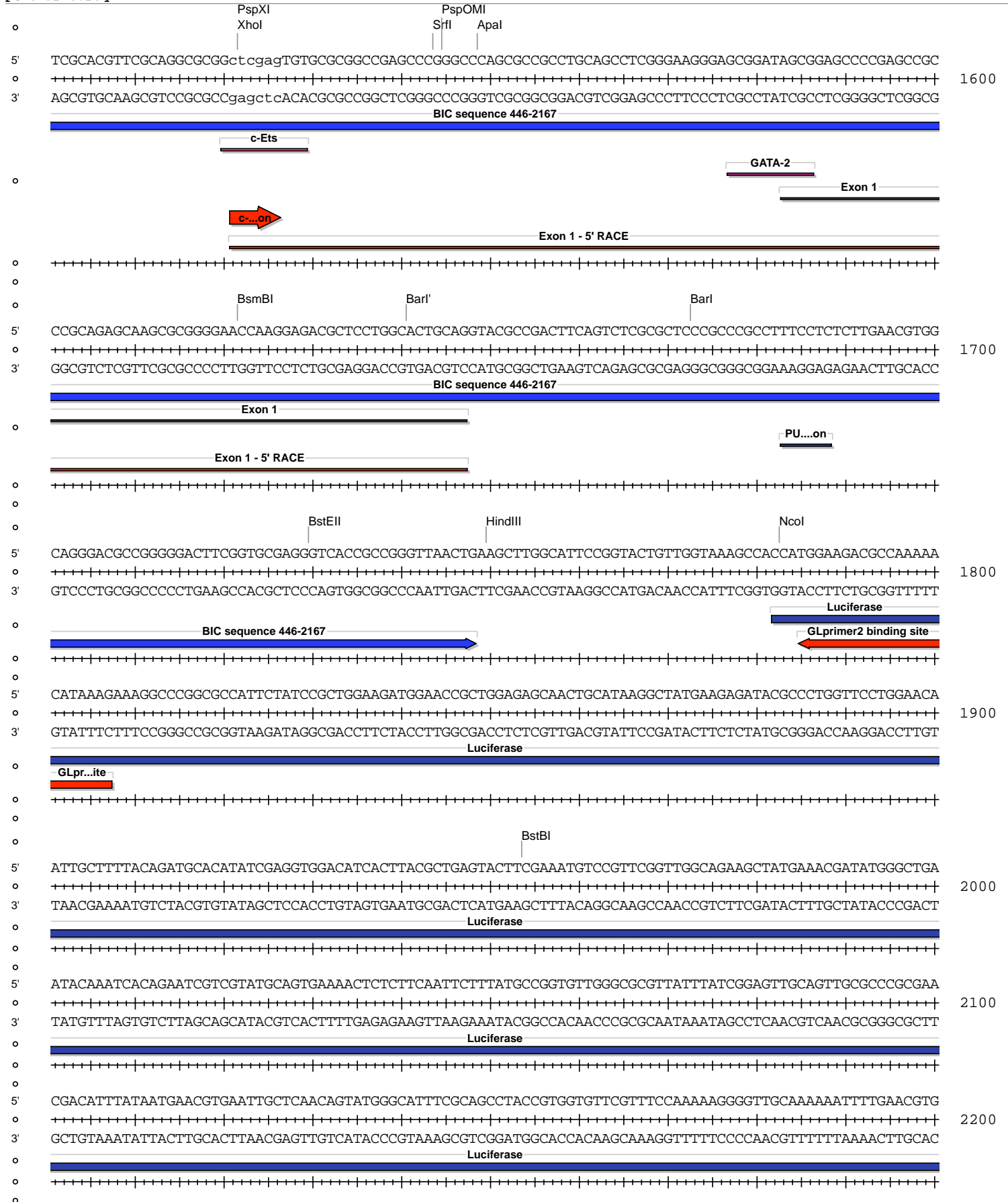


| Absent Sites | 0 | AbsI,Agel,Ajul,Ajul',AleI,AlfI,AlfI',Ascl,AsiSI,AvrII,BaeI,BaeI',BbvCI,BIpl,BmgBI,BsiWI,BssHII,BstAPI,BstXI,BstZ17I,Bsu36I,CspCI,CspCI',EcoRI,EcoRV,Fall,Fall',FspAI,MauBI,MreI,MscI,NruI,Pacl,PmeI,PmlI,Psrl,Psrl',RsrII,SacII,SanDI,SbfI,SexAI,SfiI,SgrDI,SpeI,StuI,Swal,Tth111I |
|--------------|---|--|
| AatII | 1 | 1191 (6514) |
| Accl | 1 | 3708 (6514) |
| Afel | 1 | 3833 (6514) |
| AfII | 1 | 291 (6514) |
| AhdI | 1 | 4850 (6514) |
| Alol | 1 | 6070 (6514) |
| Alol' | 1 | 6038 (6514) |
| Apal | 1 | 1549 (6514) |
| Arsl | 1 | 1162 (6514) |
| Arsl' | 1 | 1194 (6514) |
| AseI | 1 | 5022 (6514) |
| BamHI | 1 | 3701 (6514) |
| BarI | 1 | 1673 (6514) |
| BarI' | 1 | 1641 (6514) |
| BmtI | 1 | 26 (6514) |
| Bpu10I | 1 | 337 (6514) |
| BsaBI | 1 | 3700 (6514) |
| BsmBI | 1 | 1622 (6514) |
| BsrGI | 1 | 2275 (6514) |
| BstBI | 1 | 1954 (6514) |
| BstEII | 1 | 1730 (6514) |
| BtgZI | 1 | 5994 (6514) |
| EcoICRI | 1 | 10 (6514) |
| FseI | 1 | 3458 (6514) |
| HindIII | 1 | 1750 (6514) |
| MluI | 1 | 16 (6514) |
| NcoI | 1 | 1783 (6514) |
| NheI | 1 | 22 (6514) |
| NotI | 1 | 6348 (6514) |
| NsiI | 1 | 183 (6514) |
| PasI | 1 | 28 (6514) |
| PfIMI | 1 | 463 (6514) |
| PspOMI | 1 | 1545 (6514) |
| PspXI | 1 | 1522 (6514) |
| PvuII | 1 | 1054 (6514) |
| SacI | 1 | 12 (6514) |
| Sall | 1 | 3707 (6514) |
| SgrAI | 1 | 3213 (6514) |
| SnaBI | 1 | 948 (6514) |
| SphI | 1 | 2448 (6514) |
| SrfI | 1 | 1544 (6514) |
| TstI | 1 | 3348 (6514) |
| TstI' | 1 | 3316 (6514) |
| XbaI | 1 | 3439 (6514) |
| XcmI | 1 | 2520 (6514) |
| XhoI | 1 | 1522 (6514) |
| ZraI | 1 | 1189 (6514) |

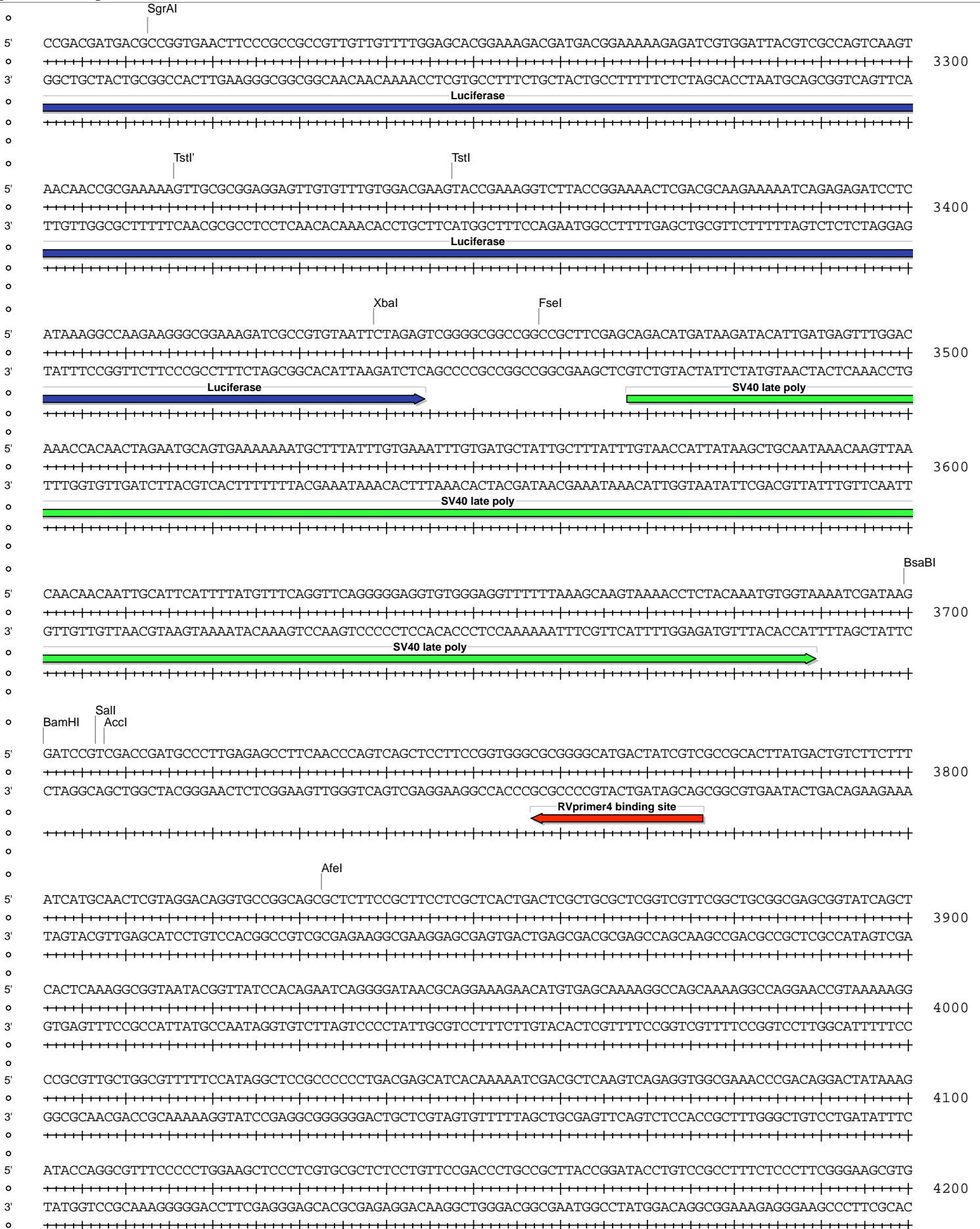


pGL3Basic.seq

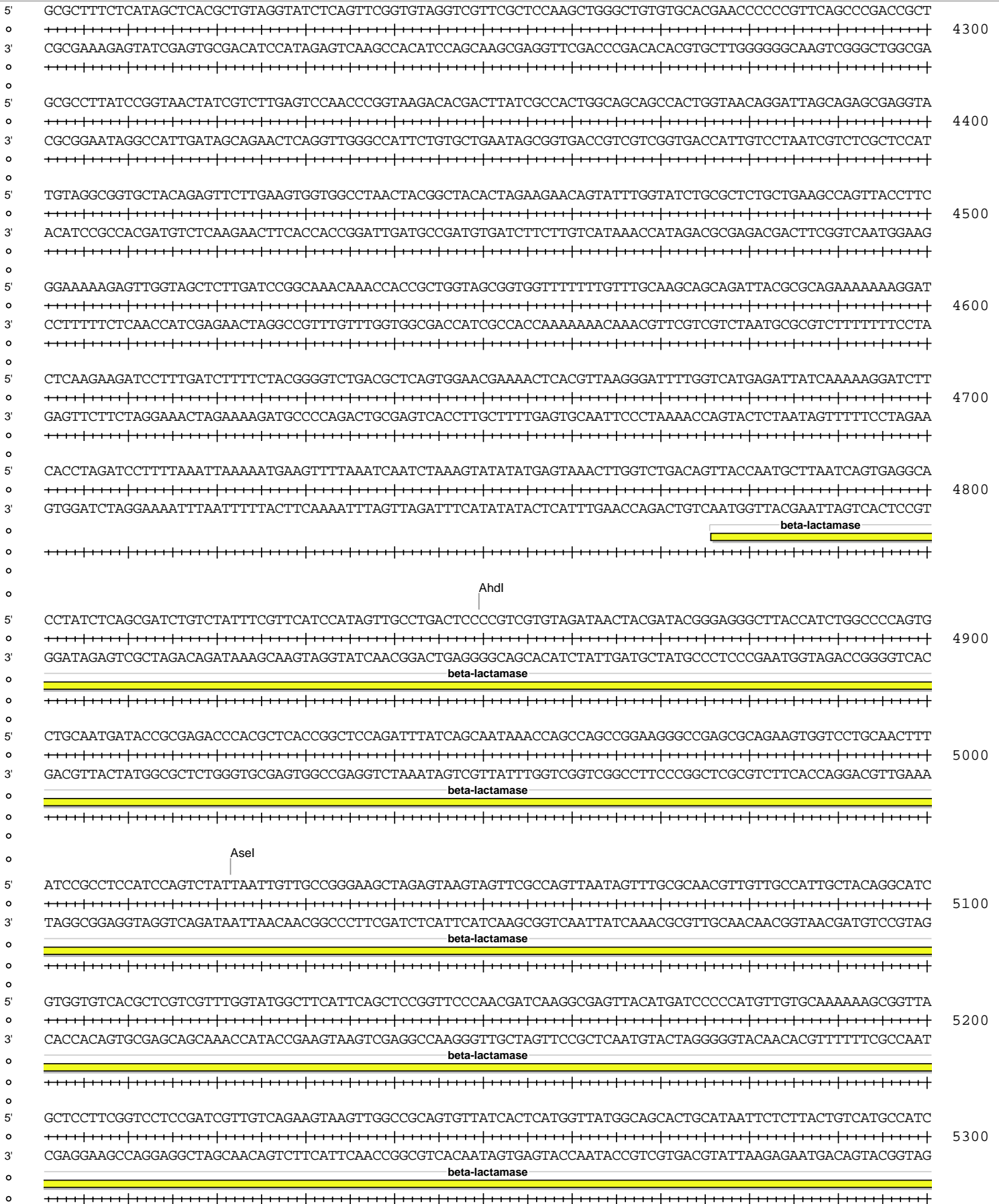








pGL3Basic.seq



pGL3Basic.seq

